

CERTIFIED LAND CORNER RESTORATION

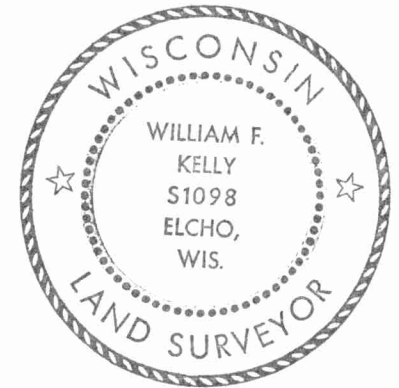
Index No. R-13

State of Wisconsin }
County of LANGLADE } ss.

History of original corner establishment:

I WILLIAM F. KELLY, do hereby certify that on the 10TH day of JULY, 19 78, I found evidence of the SOUTH EAST corner of SECTION 21 Township 31, North, Range 11E, Fourth Principal Meridian, as described hereon; and that from this evidence I established a new monument and accessories as described hereon to perpetuate the original location of this corner.

Description of corner evidence found:
FOUND 1" IRON PIN IN ROAD SET BY BECHER-HOPPE ON CONTROL SURVEY FOR AIRPORT PROPERTY.

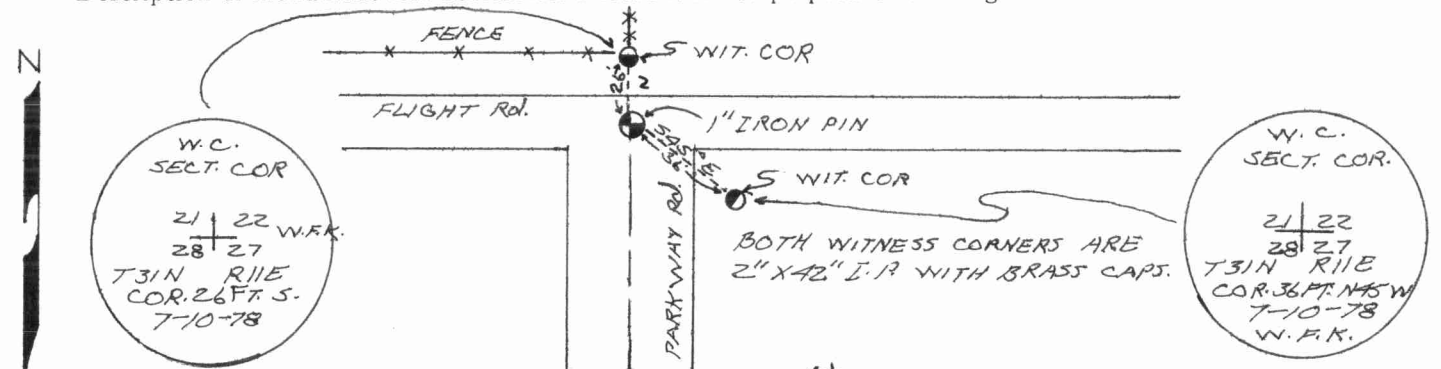
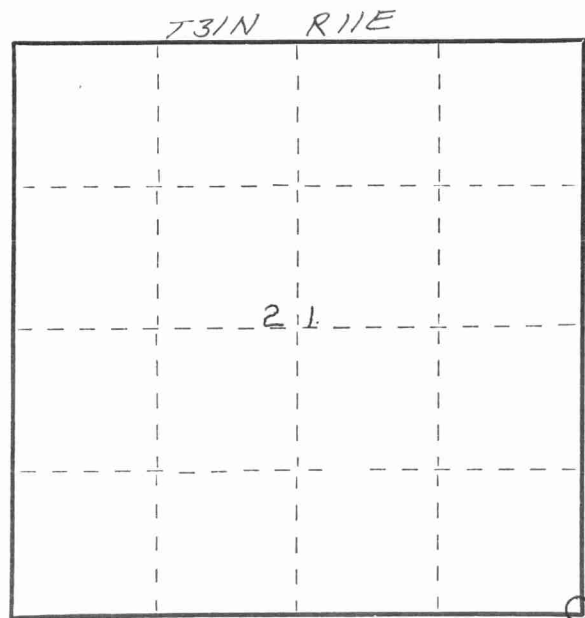


Resident witnesses:

.....
.....
.....

SEE REVISED 10/18/95 D.T.

Description of monument and accessories I established to perpetuate the original location of this corner.



Dated at ELCHO, Wis., this 16th day of SEPT, 19 78.

Signature William F. Kelly Title County Surveyor Registration No. S 1098
(County Surveyor, Registered Land Surveyor, or other duly authorized official)

Office of Register of Deeds, County of....., I hereby certify that the within instrument was filed in this office for record on the..... day of....., 19..... at..... o'clock..... M.

.....
(Register of Deeds)
By..... Deputy

○ = Corner monument restored.

FORM 985 H. C. MILLER CO., MILWAUKEE

43111210000

