

CERTIFIED LAND CORNER RESTORATION

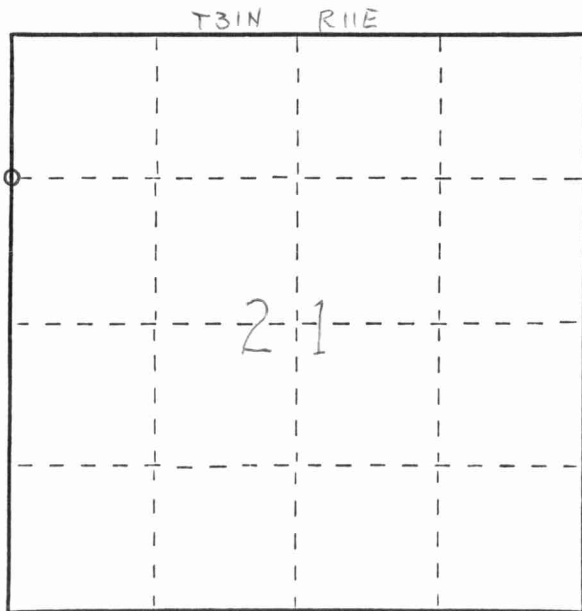
Index No. 0-9

State of Wisconsin }
 County of LANGLADE } ss.

I, WESLEY J. TRADEWELL, do hereby certify that on the 30TH day of MAY, 19 79, I found evidence of the WEST 1/16 corner of NW 1/4 SECTION 21 Township 31, North, Range 11 EAST, Fourth Principal Meridian, as described hereon; and that from this evidence I established a new monument and accessories as described hereon to perpetuate the original location of this corner.

Resident witnesses:

.....



○ = Corner monument restored.

History of original corner establishment:

5" x 6" x 20" GREY BOULDER WITH + ON TOP SET BY E.S. BROOKS IN 1909, IRON ROD SET OVER BOULDER BY DYNAMIC ENGINEERING AND SURVEYING.

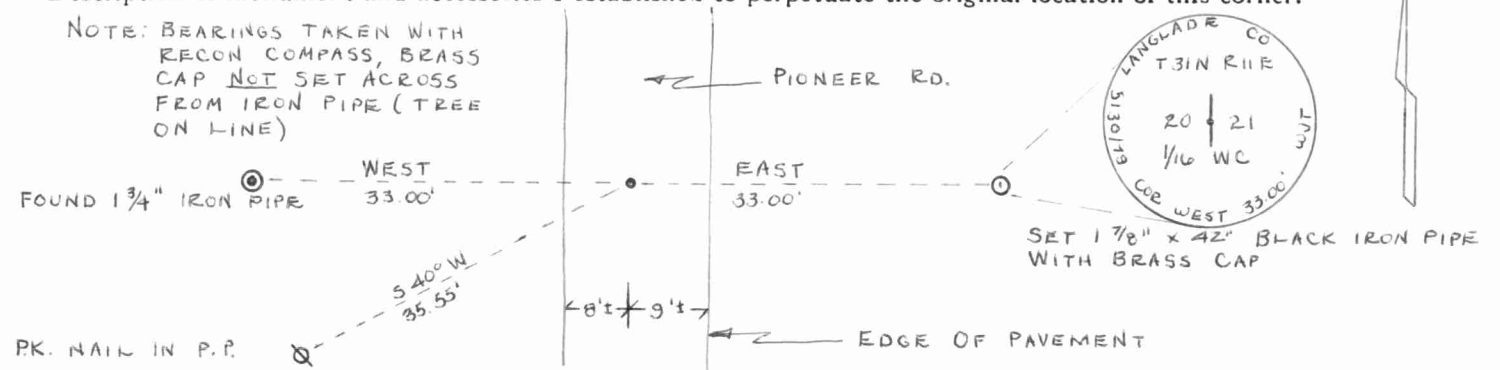
Description of corner evidence found:

FOUND 3/4" IRON ROD 2" BELOW SURFACE OF ROAD



Description of monument and accessories I established to perpetuate the original location of this corner.

NOTE: BEARINGS TAKEN WITH RECON COMPASS, BRASS CAP NOT SET ACROSS FROM IRON PIPE (TREE ON LINE)



Dated at ANTIGO, Wis., this 6TH day of JUNE, 19 79.

Signature Wesley J. Tradewell Title REGISTERED LAND SURVEYOR Registration No. 1342
 (County Surveyor, Registered Land Surveyor, or other duly authorized official)

Office of Register of Deeds, County of....., I hereby certify that the within instrument was filed in this office for record on the.....(day of....., 19..... at.....o'clock..... M.

.....
 (Register of Deeds)

By.....Deputy

FORM 985 M. C. MILLER CO., MILWAUKEE

4311203000

