

CERTIFIED LAND CORNER RESTORATION

Index No. 0-2

State of Wisconsin } ss.
County of Langlade

History of original corner establishment:

Redivided complete Section 19, T.31N., R.11E.

I Gary A. Radtke, do hereby certify that on the 13th day of December, 1977, I found evidence of the Cen. of N.W. 1/4 corner of Section 19 Township 31 North, Range 11E, Fourth Principal Meridian, as described hereon; and that from this evidence I established a new monument and accessories as described hereon to perpetuate the original location of this corner.

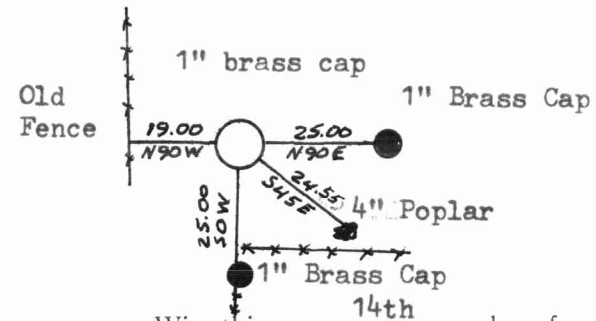
Description of corner evidence found:



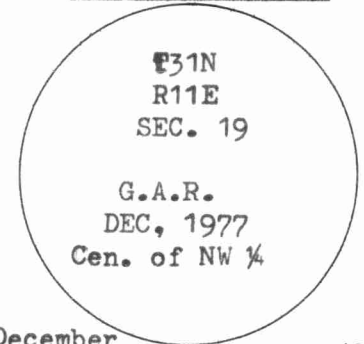
Resident witnesses:

Patrick Vander Leest

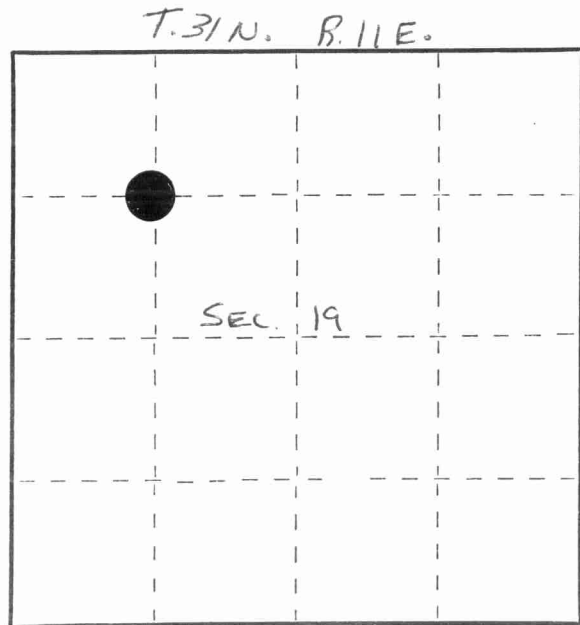
Description of monument and accessories I established to perpetuate the original location of this corner.



Brass Cap Marked



FORM 985 H. C. MILLER CO., MILWAUKEE



○ = Corner monument restored.

Dated at Antigo, Wis., this 14th day of December, 1977

Signature: Gary A. Radtke Title: Registered Land Surveyor Registration No. S-1248

Office of Register of Deeds, County of Langlade, I hereby certify that the within instrument was filed in this office for record on the day of 19 at o'clock M.

(Register of Deeds)

By Deputy

4311193030

