

CERTIFIED LAND CORNER RESTORATION

31-11 Index No. P-3

State of Wisconsin }  
 County of LANGLADE } ss.

I, THOMAS R. ARNOTT, do hereby certify that on the 15<sup>TH</sup> day of JUNE, 1973, I found evidence of the 1/4 SEC. corner of SECS. 19 & 20 Township 31, North, Range 11 EAST, Fourth Principal Meridian, as described hereon; and that from this evidence I established a new monument and accessories as described hereon to perpetuate the original location of this corner.

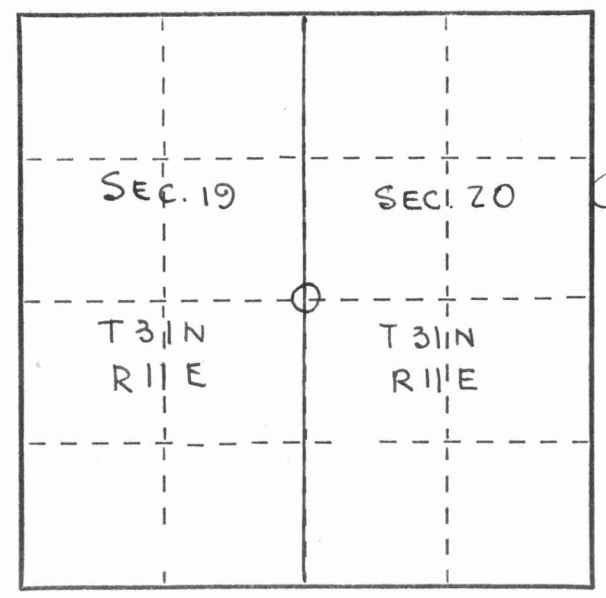
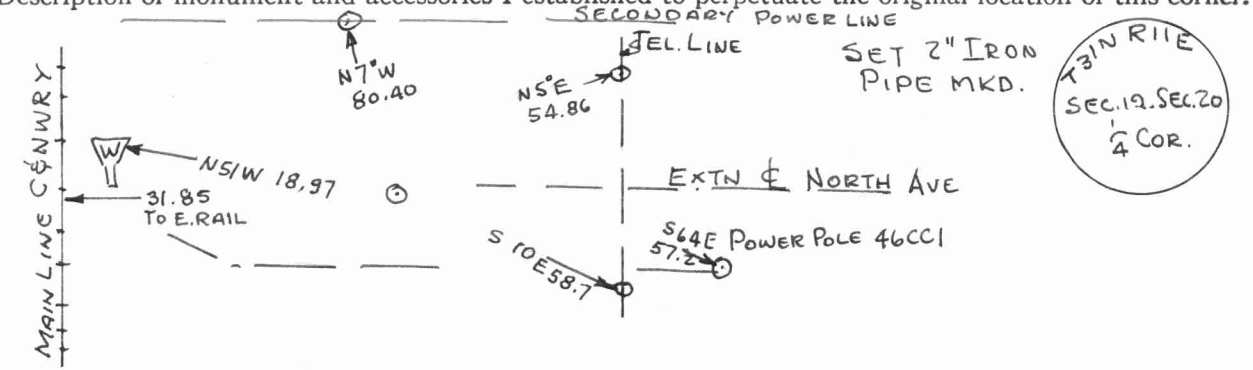
Resident witnesses:  
 \_\_\_\_\_  
 \_\_\_\_\_  
 \_\_\_\_\_



History of original corner establishment:

Description of corner evidence found:  
FOUND 1/2" REINF. ROD FROM INFORMATION GIVEN BY H. OLK RLS.

Description of monument and accessories I established to perpetuate the original location of this corner.



○ = Corner monument restored.

Dated at ANTIGO, Wis., this 15<sup>TH</sup> day of JUNE, 1973

Signature Thomas R. Arnott Title REG. LAND SURVEYOR Registration No. S-887  
 (County Surveyor, Registered Land Surveyor, or other duly authorized official)

Office of Register of Deeds, County of \_\_\_\_\_, I hereby certify that the within instrument was filed in this office for record on the \_\_\_\_\_ day of \_\_\_\_\_, 19\_\_\_\_ at \_\_\_\_\_ o'clock \_\_\_\_\_ M.

\_\_\_\_\_  
 (Register of Deeds)

By \_\_\_\_\_ Deputy

Thomas R. Arnott  
 County Surveyor

FORM 985 H. C. MILLER CO., MILWAUKEE 4311192000

1. 2