

CERTIFIED LAND CORNER RESTORATION

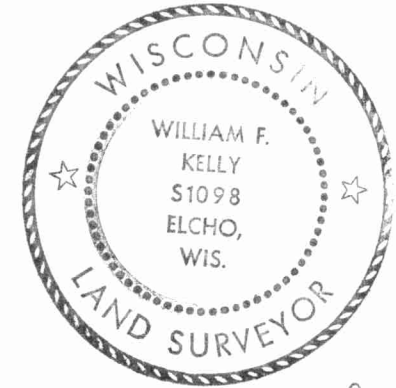
Index No. Q-5

State of Wisconsin }
 County of LANGLADE } ss.

History of original corner establishment:

I WM F. KELLY, do hereby certify that on the 15TH day of OCTOBER, 1974, I found evidence of the SOUTH 1/4 corner of SECS. 19 & 20 Township 31, North, Range 11 EAST, Fourth Principal Meridian, as described hereon; and that from this evidence I established a new monument and accessories as described hereon to perpetuate the original location of this corner.

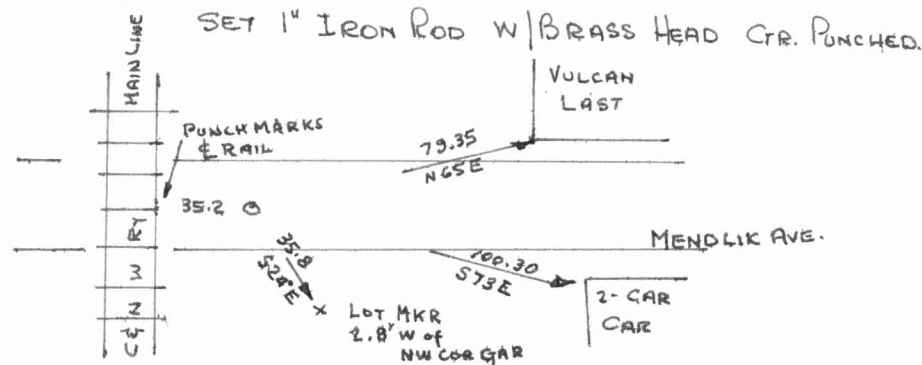
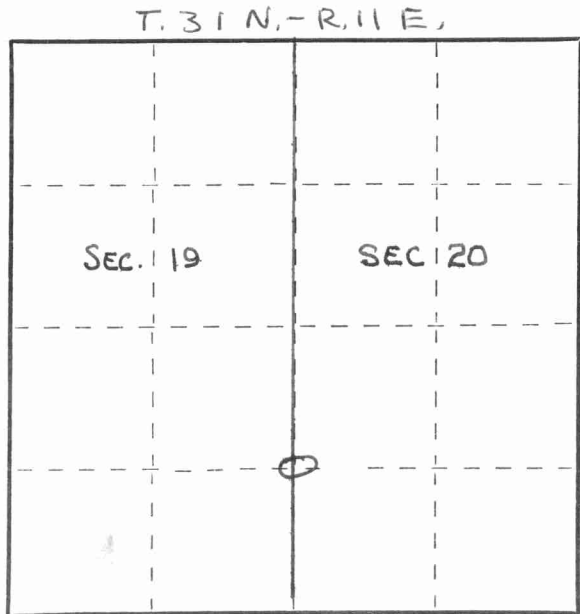
Description of corner evidence found:
RAIL ROAD SPIKE OVER STONE.



William F. Kelly

Resident witnesses:

Description of monument and accessories I established to perpetuate the original location of this corner.



Dated at ELCHO, Wis., this 15TH day of OCTOBER, 1974

Signature William F. Kelly Title REG. LAND SURVEYOR Registration No. S-1098
 (County Surveyor, Registered Land Surveyor, or other duly authorized official)

Office of Register of Deeds, County of _____, I hereby certify that the within instrument was filed in this office for record on the _____ day of _____, 19____ at _____ o'clock _____ M.

(Register of Deeds)

By _____ Deputy

○ = Corner monument restored.

FORM 985 H. C. MILLER CO., MILWAUKEE

4311191900

