

U.S. PUBLIC LAND SURVEY MONUMENT RECORD

(Prepared and as required by S. A-E 7.08 WI Administrative Code)

THE SOUTH QUARTER CORNER OF SECTION 19, T. 31 N., R. 11 E., LANGLADE COUNTY, WISCONSIN.

CORNER WAS (CHECK ALL THAT APPLY):

- RESTORED THROUGH ACCEPTANCE OF AN OBLITERATED EVIDENCE LOCATION.
- RESTORED THROUGH ACCEPTANCE OF A FOUND PERPETUATED LOCATION.
- DETERMINED TO BE LOST AND RE-ESTABLISHED BY PROPORTIONATE METHODS.
- (SHOW BEARINGS AND DISTANCES TO PLSS CORNERS USED FOR PROPORTIONING.)
- RESTORED/RECOVERED/REESTABLISHED IN A LOCATION THAT DIFFERS FROM A PREVIOUSLY ESTABLISHED POSITION.
- (SHOW DIFFERENCE IN PLAN VIEW BELOW)
- CHECK HERE IF ADDITIONAL INFORMATION IS SHOWN ON THE REVERSE SIDE OF THIS FORM.

4311190000

DESCRIBE RECORD EVIDENCE, RECOVERED PHYSICAL EVIDENCE, OCCUPATIONAL EVIDENCE, TESTIMONIAL EVIDENCE AND ALL OTHER EVIDENCE THAT WAS CONSIDERED IN THE RESTORATION/RECOVERY/REESTABLISHMENT OF THE CORNER.

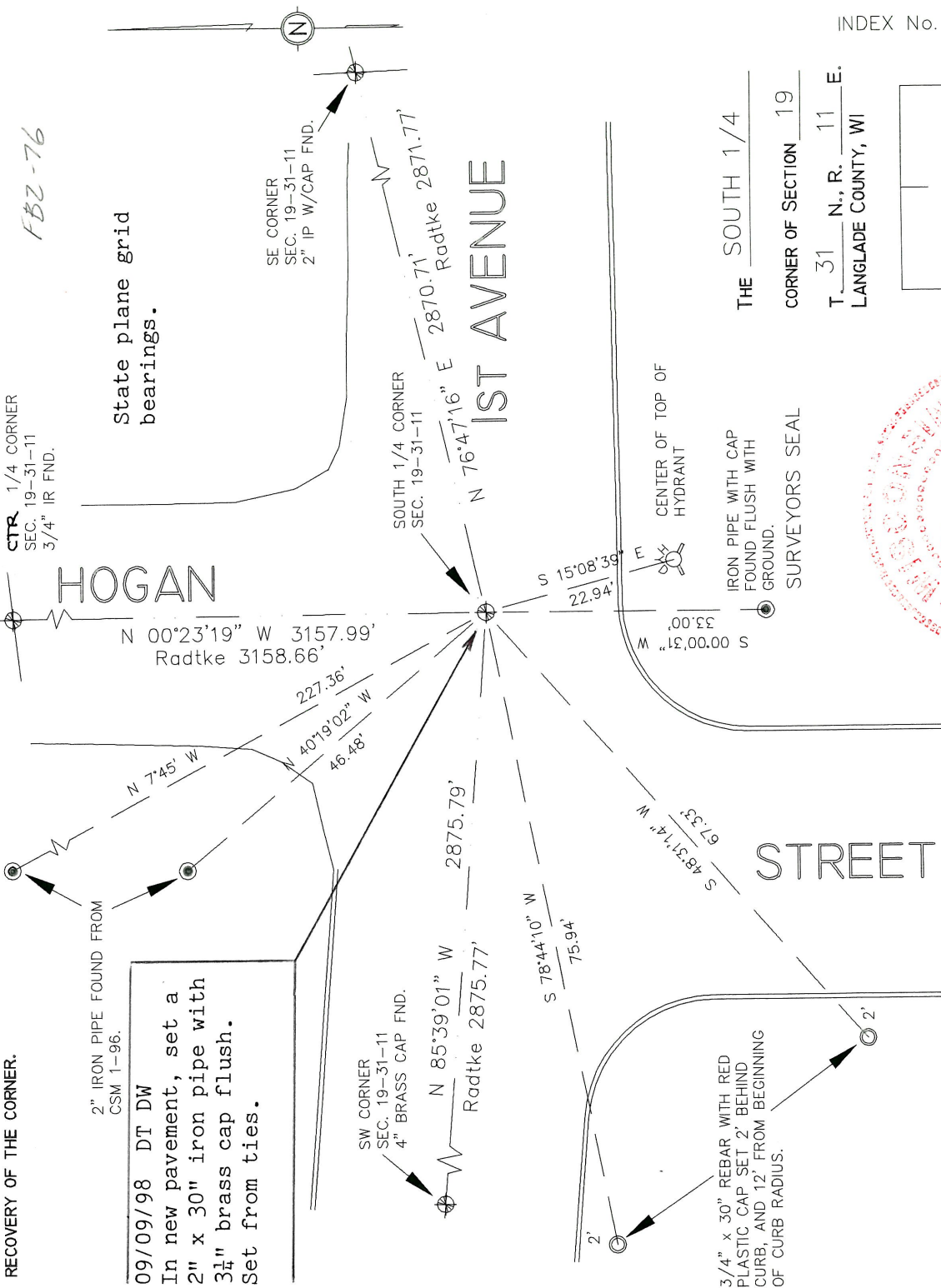
The original corner was established in 1860 by Hiram C. Fellows. Original BT's: sugar, 10", N42°E, 10 lks., and an elm, 8", S10°W, 6 lks. In 1887 on the Plat of Jones Addition of Outlots, B.F. Dorr shows this corner as being a stone. In 1901, Dorr measured 43.42 1/2 chains (2866.05') from this corner to the SE corner of Section 19. In 1919 on the plat of Morse & Tradewell Addition, Malcolm Hutchinson shows this corner as being a stone. In July, 1974 former surveyor William Kelly found "RR spike in Pav't. Stone monument referenced by City when sewer was installed. Spike was set from reference notes". In 1977, Gary Radtke used this corner in a survey of the perimeter and interior corners of Section 19. 07/29/93 D. Tlusty found & tied this corner road construction) a nail of unknown origin. 10/24/94 D. Tlusty re-set nail & washer from 07/29/93 ties. 11/15/96 D. Tlusty re-established corner location from NW 2" pipe tie shown on Kellys corner form, and 33.00 feet north of old capped iron pipe. This pipe was verified by Pat VanderLeest as being an old witness corner which was 33' south of the 1/4 corner. This re-established corner position fits very well with dimensions shown on Radtkes map of Section 19. Based on the chain of evidence, I accept this re-established corner position as the best evidence of the original corner location and perpetuate it as shown below.

Re-established corner position is S 47°49'34" W, 2.07' from re-set nail and washer, and S 61°12'53" W, 1.93' from a PK nail found.

PHYSICAL DESCRIPTION OF THE MONUMENT SET:

Set small nail as temporary corner until road thaws out. Corner falls approximately 2.7' NE of the center of manhole.

DESCRIBE THE ACCESSORIES USED TO PERPETUATE THE LOCATION OF THE CORNER. INCLUDE A PLAN VIEW DRAWING AND INDICATE ACCESSORIES FOUND AND SET. DESCRIBE THE MEASURING POINT ON BEARING TREES. SHOW ANY TOPOGRAPHIC FEATURES THAT WOULD AID IN THE FUTURE RECOVERY OF THE CORNER.

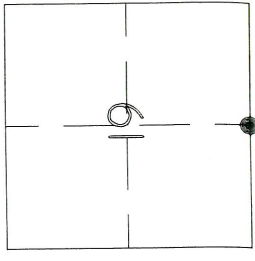
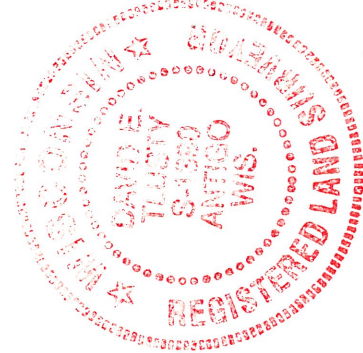


09/09/98 DT DW
In new pavement, set a .2" x 30" iron pipe with 3/4" brass cap flush. Set from ties.

David E. Tlusty
Langlade County Surveyor, CERTIFY THAT THE CORNER LOCATION SHOWN ON THIS RECORD WAS DETERMINED BY ME OR UNDER MY DIRECTION AND CONTROL AND THAT THIS U.S. PUBLIC LAND SURVEY MONUMENT RECORD IS CORRECT AND COMPLETE TO THE BEST OF MY KNOWLEDGE AND BELIEF.

David E. Tlusty 11/15/96

SIGNATURE DATE



● = LOCATION OF CORNER

THE SOUTH 1/4
CORNER OF SECTION 19
T. 31 N., R. 11 E.
LANGLADE COUNTY, WI

INDEX No. R3

4311190020

I measured 1435.96' east to 1/16th corner which was re-set from Radtke ties. His distance was 1435.99'. It appears that Radtke had a 1 foot bust in the distance from the 1/16th corner to the Section corner, as I measure 1434.88' and Radtke had 1435.78'

1/120/96 D. ZEUSBY

FOUND NOTES (FB 110-6) THAT INDICATE THAT DONN SIEP
THE STONE IN AUG., 1883