

U.S. PUBLIC LAND SURVEY MONUMENT RECORD

Corner was: (check all that apply)
 (Prepared and as required by S. A-E 7.08 Wi Administrative Code)

4311119 0000

- Restored through acceptance of an obliterated evidence location
- Restored through acceptance of a found perpetuated location
- Determined to be lost and reestablished through proportionate methods.
- (Show bearings and distances to PLSS corners used for proportionating)
- Restored/recovered/reestablished in a location that differs from a previously established position. (Show difference in plan view below.)
- Check here if additional information is shown on the reverse side of this form

Describe record evidence, recovered physical evidence, occupational evidence, testimonial evidence and all other evidence considered in the recovery/restoration of corner.

1860 - Original Corner established by Hiram C. Fellows
 Original BT'S: ELM 10" S85°W 12 LINKS
 SUGAR 7" N61°E 18 LINKS

1883 - B. F. DORR measured S76°W Magnetic, 2868 Feet from here to N1/4 corner of Section 30.

1977 - Gary A. Radtke states that there is a 2" B.C.I.P. for corner and retied. Center of N-S R.R. tracks, 90°W, 39.51 Feet, Building corner , N5°E, 48.60 Feet, and 6" Red Pine, S5°E, 43.50 Feet.

2018 - Dean A. Williams, found 2"B.C.I.P. under manhole cover and no remaining ties.

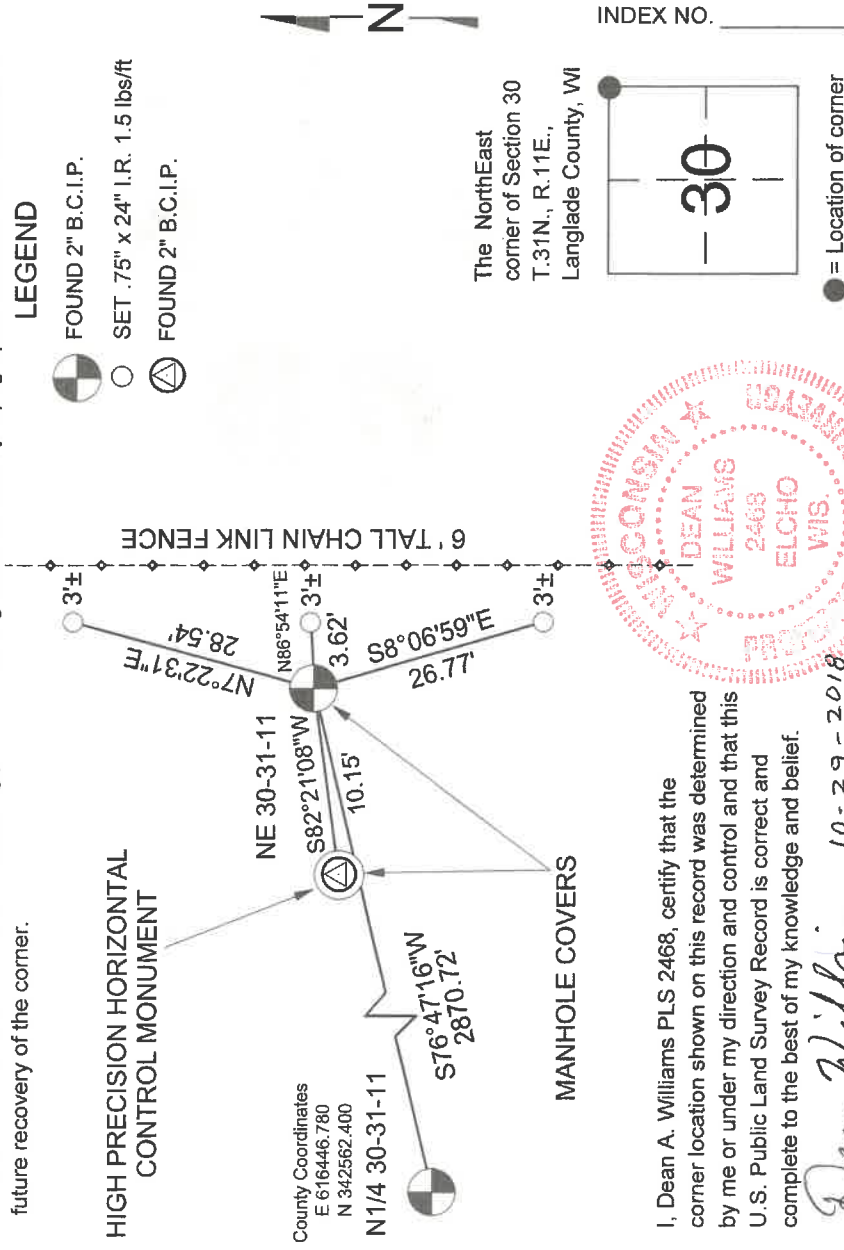
Accepted I.P. as best possible evidence of corner location.

At some point in the past, somebody installed manhole covers over this corner and the horizontal control monument.

Physical description of the monument set:

Accepted 2" B.C.I.P. as best possible evidence of corner location.
 And retied as shown.

Describe the accessories used to perpetuate the location of the corner. Include a plan view drawing and indicate accessories found/set. Describe measuring point on bearing trees. Show any topographic features that would aid in future recovery of the corner.



R 5 31-11



I, Dean A. Williams PLS 2468, certify that the corner location shown on this record was determined by me or under my direction and control and that this U.S. Public Land Survey Record is correct and complete to the best of my knowledge and belief.

Dean Williams 10-29-2018

Signature _____ Date _____ BEARINGS REFERENCED TO LANGLADE COUNTY COORDINATE GRID