

U.S. PUBLIC LAND SURVEY MONUMENT RECORD

(Prepared and as required by S. A-E 7.08 WI Administrative Code)

The SOUTH 1/4 corner of Section 18, T. 31 N., R. 11 E., Langlade County, WI
Corner was (check all that apply)

- Restored through acceptance of an obliterated evidence location.
- Restored through acceptance of a found perpetuated location.
- Determined to be lost and re-established through proportionate methods. (show bearings and distances to PLSS corners used for proportioning.)
- Restored/recovered/re-established in a location that differs from a previously established position. (Show difference in plan view below.)
- Check here if additional information is shown on the reverse side of this form.

Describe record evidence, recovered physical evidence, occupational evidence, testimonial evidence, and all other evidence considered in the recovery/restoration of the corner.

1860 - Original corner established by H.C. Fellows - bearing trees: Tamarac, 7", N30°E, 22 links; Tamarac, 6", S10°W, 8 links.

1977 - Gary Radtke set a 2" brass capped monument. Radtke made ties and filed a tie sheet.

2023 - I found an existing brass capped monument in good condition at the corner location. No ties by Radtke were found. Corner checks out well with previous survey work in the area.

Physical description of the monument set:

Accepted brass capped iron pipe as corner location and tied out as shown below.



Describe the accessories used to perpetuate the location of the corner. Include a plan view drawing and indicate accessories found/set. Describe measuring point on bearing trees. Show any topographic features that would aid in future recovery of the corner.

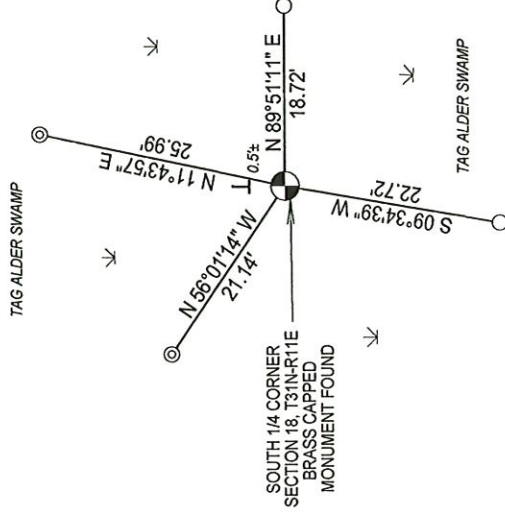
SOUTH 1/4 CORNER
SECTION 18, T31N-R11E
BRASS CAPPED
MONUMENT FOUND

N: 348426.54
E: 616496.47

LANGLADE COUNTY COORDINATES
NAD 83 (2011)
OBSERVED 08-16-2023
RTK GPS

LEGEND

-  FOUND BRASS CAPPED MONUMENT
-  SET 3/4" X 30" REBAR
-  SET 1" X 36" IRON PIPE
-  WHITE VINYL T-POST WITH SURVEY MARKER SIGN SET



NOTES
- SKETCH NOT DRAWN TO SCALE
- TIE BEARINGS SHOWN ARE LANGLADE COUNTY GRID BEARINGS.
- ALL TIES MEASURED ELECTRONICALLY WITH TOTAL STATION.

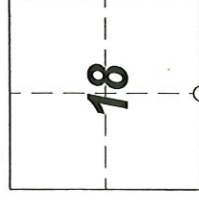
I, Michael J. Hoffman, certify that the corner location shown on this record was determined by me or under my direction and control and that this U.S. Public Land Survey Monument Record is correct and complete to the best of my knowledge and belief.

Michael J. Hoffman 09-25-2023
Signature Date

SURVEYORS SEAL



The SOUTH 1/4
Corner of Section 18
T. 31 N., R. 11 E.
Langlade County, WI



○ = Location of corner

INDEX No. N - 3 4311118 0020

CERTIFIED LAND CORNER RESTORATION

Index No. N-3

State of Wisconsin }
County of Langlade } ss.

History of original corner establishment:

Re-divided complete Section 19, T31N, R11E

I Gary A. Radtke, do hereby certify that on the 13th day of December, 1977, I found evidence of the NW corner of Section 19 Township 31, North, Range 11E, Fourth Principal Meridian, as described hereon; and that from this evidence I established a new monument and accessories as described hereon to perpetuate the original location of this corner.

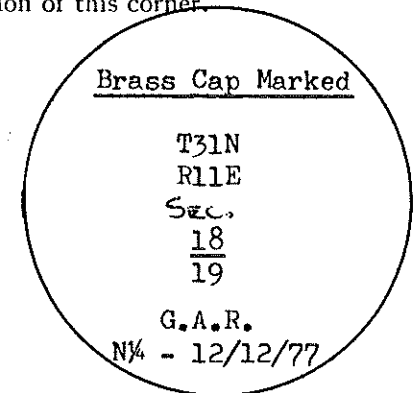
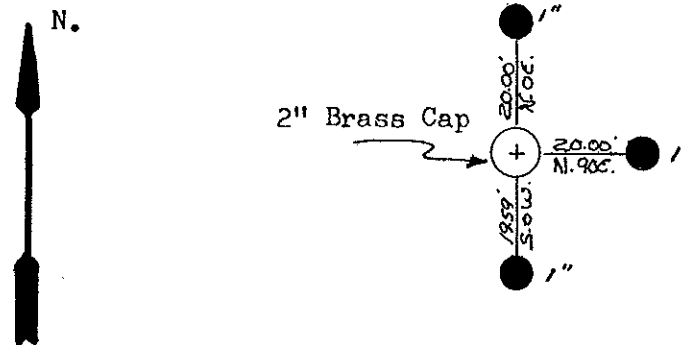
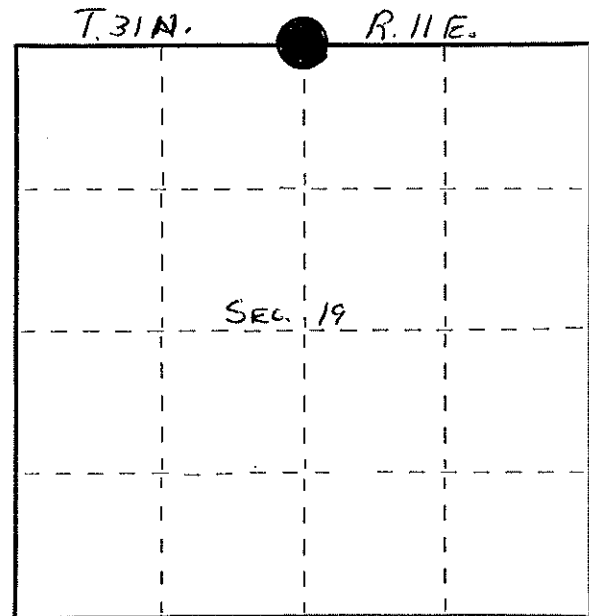
Description of corner evidence found:

Resident witnesses:

Patrick Vander Leest



Description of monument and accessories I established to perpetuate the original location of this corner:



Dated at Antigo, Wis., this 14th day of December, 1977

Signature Gary A. Radtke Title Registered Land Surveyor Registration No. S-1248
(County Surveyor, Registered Land Surveyor, or other duly authorized official)

Office of Register of Deeds, County of Langlade, I hereby certify that the within instrument was filed in this office for record on the _____ day of _____, 19____ at _____ o'clock _____ M.

(Register of Deeds)

By _____ Deputy

○ = Corner monument restored.

FORM 965 M. E. MILLER CO., MILWAUKEE
4311180020