

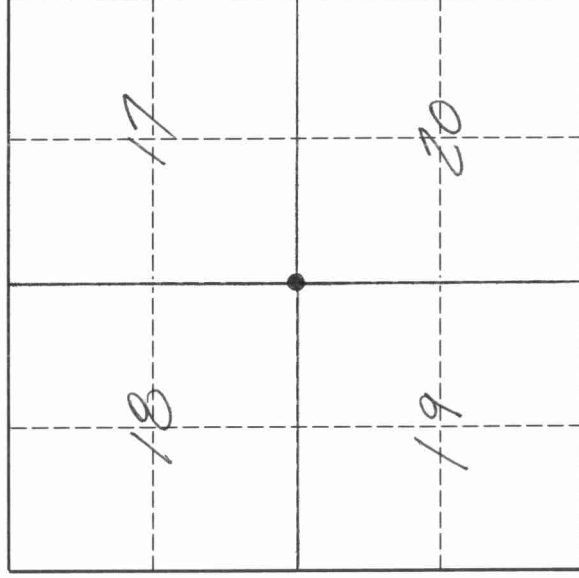
4311180000

U. S. PUBLIC LAND SURVEY MONUMENT RECORD

INSTRUCTIONS:

This record shall show the location of the corner and shall include all of the following nine elements (a through i).

- (a) Identify the corner by reference to the U.S. public land survey system.
- = Corner monument restored.



The Southwest corner of Section 17, Township 31 North, Range 11 East, Langlade County, Wisconsin.

- (b) Describe any record evidence, monument evidence, occupational evidence, testimonial evidence or any other material evidence you considered, and whether the monument was found or placed.

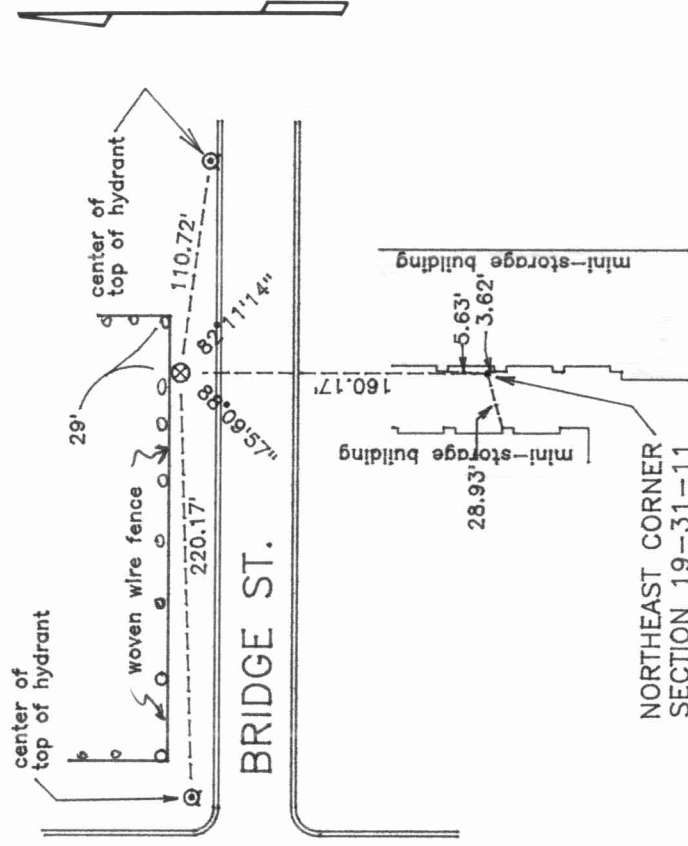
11/16/92 D. Tlusty I find existing 2" iron pipe with brass cap (as set by Gary Radtke in 1977) to be bent and in danger of removal from nearby construction of mini storage building. I removed the existing iron pipe, and at the straightened position of the base of said monument, I set a 1" x 30" iron pipe, top of which is 1 foot below ground. I then measured to said 1" iron pipe as shown below.

I make this corner form only to preserve the location of the Radtke corner location. I have not done any field work or office research to verify or dispute Radtkes corner location.

- (c) In the plan view drawing below, provide reference ties to at least 4 witness monuments, or, if the location is within a municipality, to at least 2 witness monuments. (Witness monuments shall be made of concrete, natural stone, iron or other equally durable material.) Describe witness monuments.

Tie distances shown below were measured electronically. Angles shown are the average of three turned with 5" instrument.

- (d) Show a plan view drawing depicting the relevant monuments and reference ties which is sufficient in detail to enable accurate relocation of the corner monument if the corner monument is disturbed. Indicate north.



LEGEND

- ⊗ 3/4" x 30" iron rod (re-bar) set, 6' south of woven wire fence, and 1' south of vinyl sign post with "Survey Marker" sign
- Section corner

NORTHEAST CORNER
SECTION 19-31-11

4311180000

Describe any material discrepancy between the location of the corner as restored or reestablished and the location of that corner as previously restored or reestablished by distance and direction. Show the discrepancy on the plan view drawing under (d), above. Show the distances between the corner as previously restored or reestablished and (1) the corner as restored or reestablished, and (2) to at least 2 of the witness monuments shown on the drawing in (d), above.

No apparent discrepancy (see note on front of this sheet).

- (f) Was the corner restored through acceptance of (1) an obliterated evidence location, or, (2) a found perpetuated location?
A found perpetuated location.

- (g & h) Was the corner reestablished through lost corner proportionate methods? If so, show the method, including the directions and distances to other public land survey corners used as evidence or used for proportioning in determining the corner location.



(i) I, David E. Tlusty, Langlade County Surveyor
(type or print name)

certify that the corner location shown on this record was determined by me or under my direction and control and that this U.S. Public Land Survey Monument Record is correct and complete to the best of my knowledge and belief.


Signature

March 15, 1993
Date