

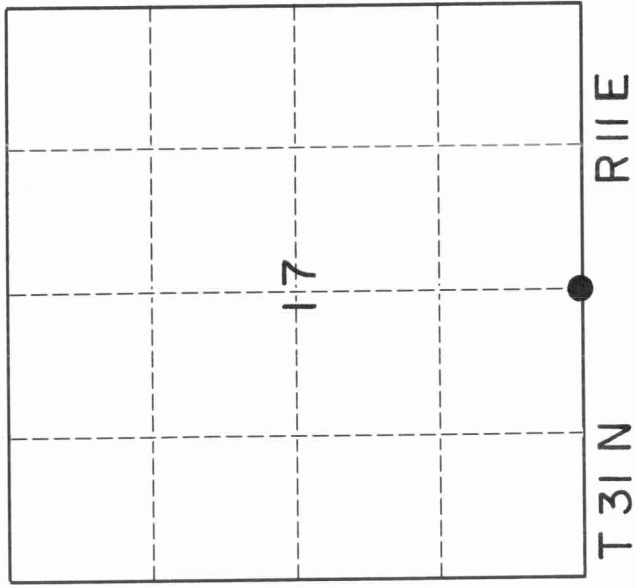
4311170020

U. S. PUBLIC LAND SURVEY MONUMENT RECORD

INSTRUCTIONS:

This record shall show the location of the corner and shall include all of the following nine elements (a through i).

- (a) Identify the corner by reference to the U.S. public land survey system.
- O = Corner monument restored.

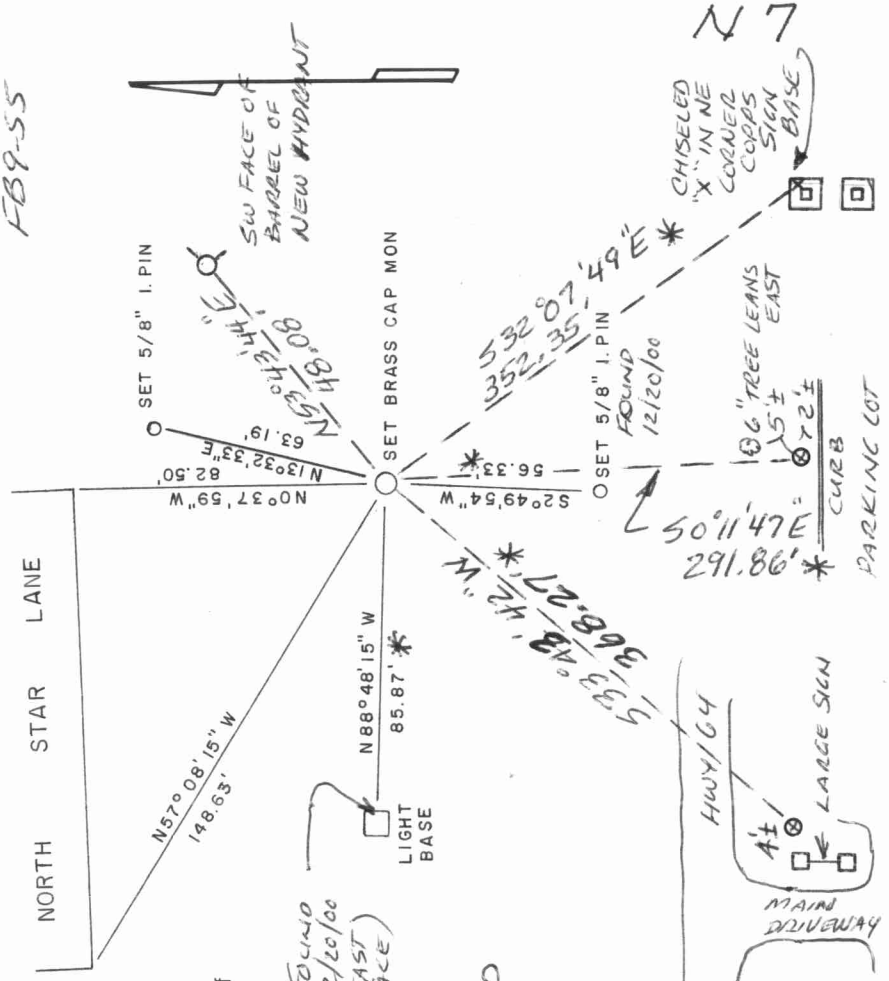


This corner was originally placed by Hiram C. Fellows in 1860. It has since been perpetuated through the Owner's Plat of the North 1/2 of Section 20-31-11

- (b) Describe any record evidence, monument evidence, occupational evidence, testimonial evidence or any other material evidence you considered, and whether the monument was found or placed.

Using the Owner's Plat of the North 1/2 of Section 20-31-11 and other notes found at the County Surveyor's Office, this corner was proportioned into place using the same proportion as the aforementioned Owner's Plat.

- (c) In the plan view drawing below, provide reference ties to at least 4 witness monuments, or, if the location is within a municipality, to at least 2 witness monuments. (Witness monuments shall be made of concrete, natural stone, iron or other equally durable material.) Describe witness monuments.



- (d) Show a plan view drawing depicting the relevant monuments and reference ties which is sufficient in detail to enable accurate relocation of the corner monument if the corner monument is disturbed. Indicate north.

12/20/00 D. TLUSTY MONUMENT TO BE DESTROYED IN NEAR FUTURE. ADDED & CHECKED TIES MARKED *

D. TLUSTY
12/21/00
9/18/07
SEE OVER

K-MART COOPS

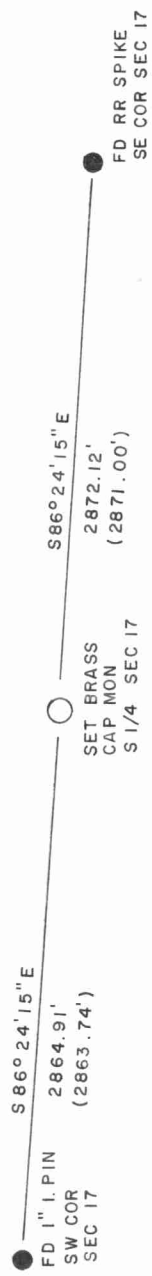
4311170000

Describe any material discrepancy between the location of the corner as restored or reestablished and the location of that corner as previously restored or reestablished by distance and direction. Show the discrepancy on the plan view drawing under (d), above. Show the distances between the corner as previously restored or reestablished and (1) the corner as restored or reestablished, and (2) to at least 2 of the witness monuments shown on the drawing in (d), above.

There is already an existing corner on record as the South 1/4 corner of Section 17. The existing corner falls in the USH 45 and STH 64 intersection. This corner can not be used to determine 40 lines in Section 17 without causing many problems. Likewise the corner on file as the Center 1/4 of Section 17 causes difficulties.

(f) Was the corner restored through acceptance of (1) an obliterated evidence location, or, (2) a found perpetuated location.?

(g & h) Was the corner reestablished through lost corner proportionate methods? If so, show the method, including the directions and distances to other public land survey corners used as evidence or used for proportioning in determining the corner location.
The corner was restored through a straight proportion with record distances from the Owner's Plat and our found distances which were very close to the same.



9/18/07 Now THAT A GAS STATION HAS COME AGONE @ THIS SITE, I RE-SET A GEARHEAD SPIKE IN NEW ASPHALT FROM MY TIES ON THE FRONT SIDE OF THIS SHEET
9/18/07 D. Higginbotham



(i) I, Daniel E. Higginbotham (type or print name)

certify that the corner location shown on this record was determined by me or under my direction and control and that this U.S. Public Land Survey Monument Record is correct and complete to the best of my knowledge and belief.

Daniel E. Higginbotham
Signature

December 28, 1993
Date