

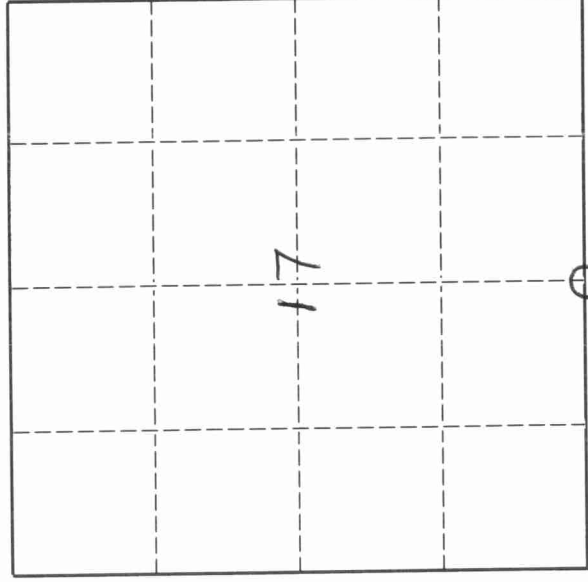
4311170030

U. S. PUBLIC LAND SURVEY MONUMENT RECORD

INSTRUCTIONS:

This record shall show the location of the corner and shall include all of the following nine elements (a through i).

- (a) Identify the corner by reference to the U.S. public land survey system.
- O = Corner monument restored.



T 31 N - R 11 E

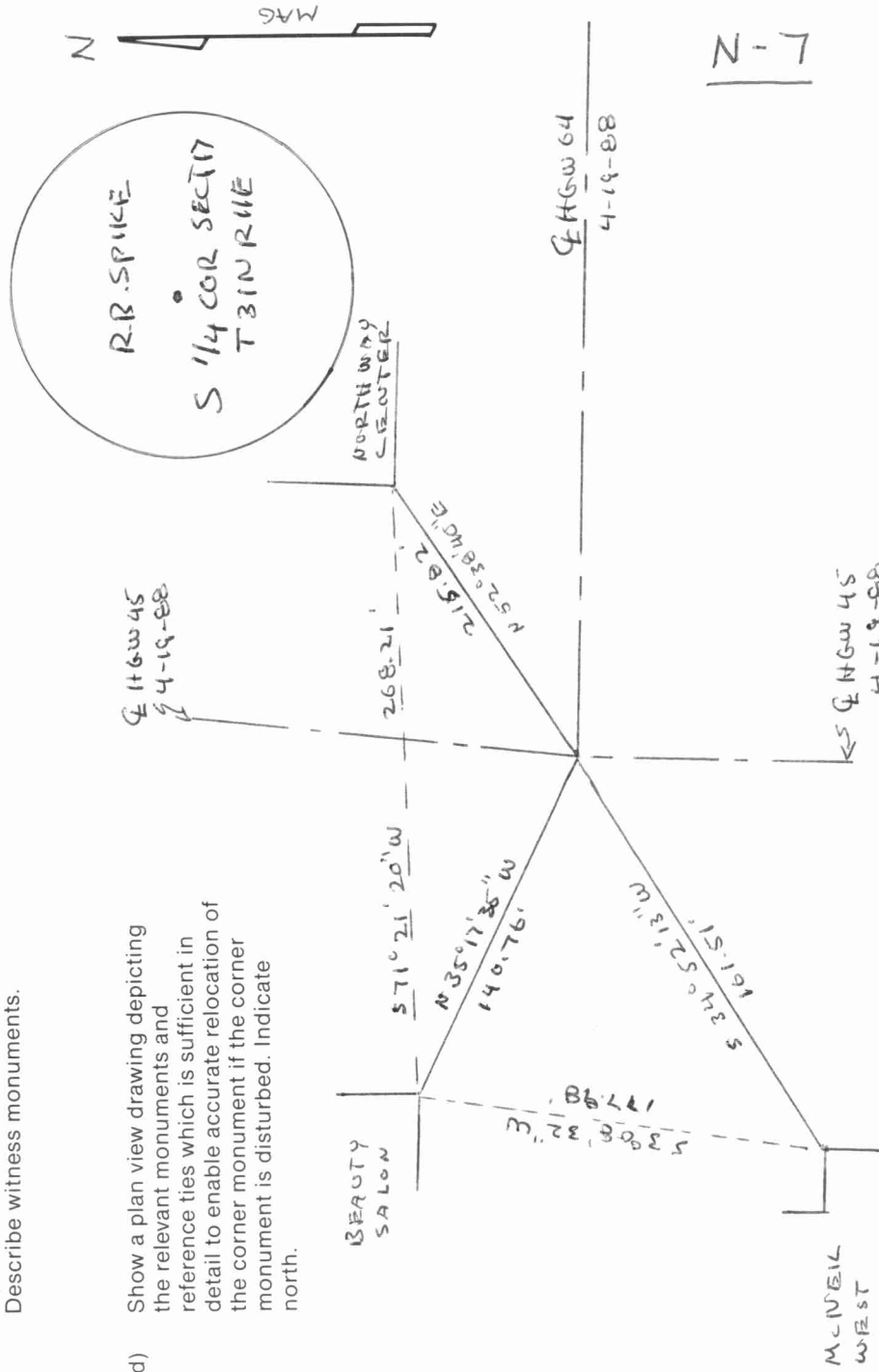
ORIGINAL CORNER ESTABLISHED BY H.C. FELLOWS IN JULY 1860

CORNER PERPETUATED BY HENRY OLK AT CENTER LINE INTERSECTION OF HIGHWAY 64 AND 45.

- (b) Describe any record evidence, monument evidence, occupational evidence, occupational evidence, testimonial evidence or any other material evidence you considered, and whether the monument was found or placed.

LOCATION OF CORNER WITNESSED AS SHOWN BELOW TO ALLOW ROAD CONSTRUCTION. A R.R. SPIKE WILL BE SET TO MARK CORNER LOCATION IN SUMMER 1988 WHEN ROAD CONSTRUCTION IS COMPLETED

- (c) In the plan view drawing below, provide reference ties to at least 4 witness monuments, or, if the location is within a municipality, to at least 2 witness monuments. (Witness monuments shall be made of concrete, natural stone, iron or other equally durable material.) Describe witness monuments.



- (d) Show a plan view drawing depicting the relevant monuments and reference ties which is sufficient in detail to enable accurate relocation of the corner monument if the corner monument is disturbed. Indicate north.

