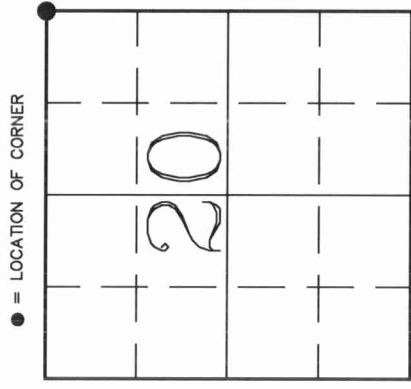


4311170000

# U.S. PUBLIC LAND SURVEY MONUMENT RECORD

**HISTORY OF ORIGINAL CORNER ESTABLISHMENT AND SUBSEQUENT RESTORATION AND DESCRIPTION OF ANY RECORD, MONUMENT OCCUPATIONAL, TESTIMONIAL OR OTHER EVIDENCE CONSIDERED:**

ORIGINAL CORNER ESTABLISHED IN 1860 BY H.C. FELLOWS. CORNER PERPETUATED BY B.F. DORR IN 1883 WITH STONE. M. HUTCHINSON SET NEW STONE OVER DORR'S IN 1922. REFERENCED STONE TO PIONEER SCHOOLHOUSE. R. POSS WITNESSED STONE SET BY HUTCHINSON IN JULY 1971.  
 WILLIAM KELLY SET WITNESS MONUMENTS TO CLEAR ROAD CONSTRUCTION IN 1988.  
 HIGGINBOTHAM LOCATED A 1" IRON ROD THAT MATCHED KELLY'S LOCATION IN THE EARLY 90'S. ON 2/17/05, GERRY BAHAR AND JAKE JENSEN SET A SN-1 NAIL AT THE SPOT THE 1" ROD WAS (ROD LOST DUE TO ROAD CONSTRUCTION) AND TIED OUT AS SHOWN BELOW.

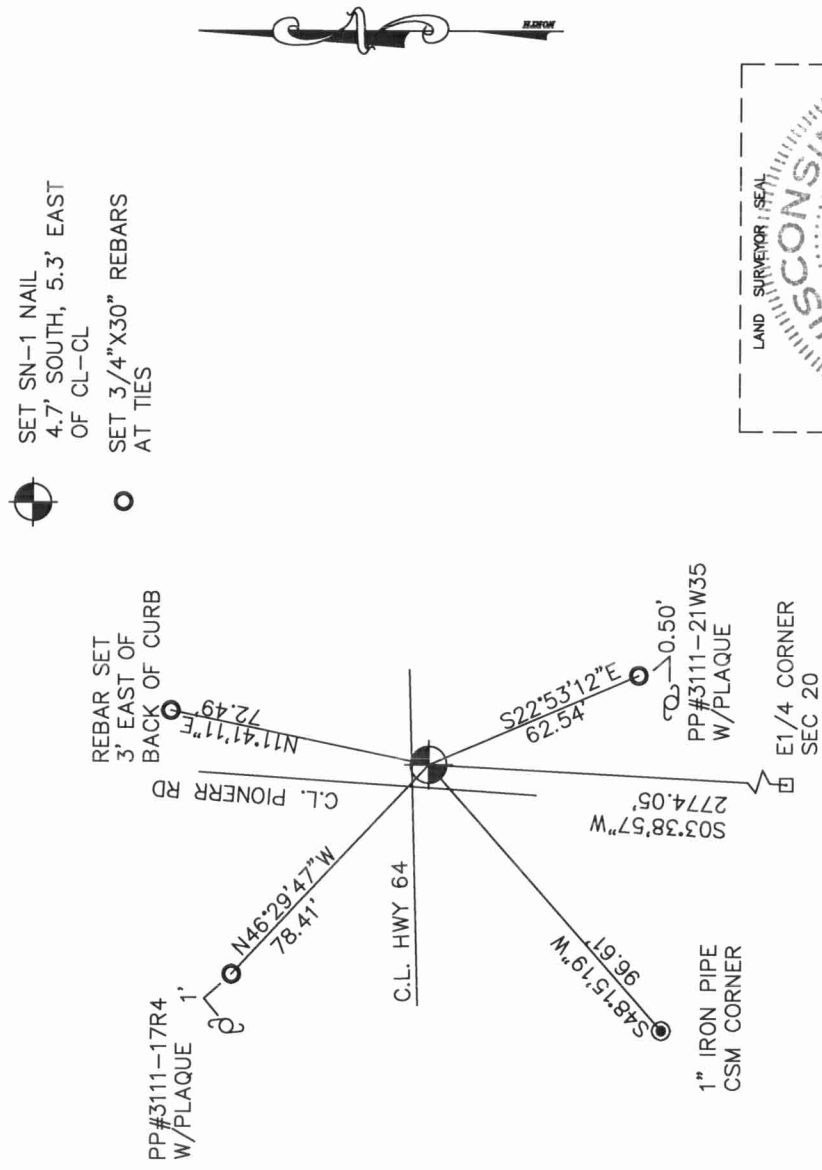


SECTION 20  
 TOWNSHIP 31 NORTH, RANGE 11 EAST  
 TOWN OF ANTIGO  
 LANGLADE COUNTY, WISCONSIN

**CORNER WAS: (CHECK ALL THAT APPLY)**

- RESTORED THROUGH ACCEPTANCE OF AN OBLITERATED EVIDENCE LOCATION
- RESTORED THROUGH ACCEPTANCE OF A FOUND PERPETUATED LOCATION
- CONSIDERED A LOST CORNER AND REESTABLISHED THROUGH LOST CORNER PROPORTIONATE METHODS (INCLUDE A PLAN VIEW DRAWING SHOWING DISTANCES AND DIRECTIONS TO OTHER PUBLIC LAND SURVEY CORNERS USED FOR PROPORTIONING AND DETERMINING THE CORNER LOCATION)
- RESTORED OR REESTABLISHED IN A LOCATION THAT DIFFERS FROM A PREVIOUS RESTORATION OR REESTABLISHMENT (INCLUDE A PLAN VIEW DRAWING AND INDICATE WHAT WAS SET AND/OR FOUND)
- CHECK IF THERE IS ADDITIONAL INFORMATION ON BACK

DESCRIBE THE MONUMENT AND ACCESSORIES USED TO PERPETUATE THE LOCATION OF THE CORNER. (INCLUDE A PLAN VIEW DRAWING AND INDICATE WHAT WAS SET AND/OR FOUND) ALSO INCLUDE FOUR TIES TO THE SECTION CORNER AND DESCRIPTION OF THE TIES.



**DANIEL E. HIGGINBOTHAM**

(Type or print name) CERTIFY THAT THE CORNER LOCATION SHOWN ON THIS RECORD WAS DETERMINED BY ME OR UNDER MY DIRECTION AND CONTROL AND THAT THIS U.S. PUBLIC LAND SURVEY MONUMENT RECORD IS CORRECT AND COMPLETE TO THE BEST OF MY KNOWLEDGE AND BELIEF.

*D. Higginbotham*  
 SIGNATURE

12/06/05  
 DATE

