

CERTIFIED LAND CORNER RESTORATION

31-11  
Index No. N-9

State of Wisconsin }  
County of LANGLADE } ss.

I, ROBERT J. POSS, do hereby certify that on the 27TH day of JULY, 1971, I found evidence of the SECTION corner of SEC'S 16, 17, 20, 21 Township 31, North, Range 11 EAST, Fourth, Principal Meridian, as described hereon; and that from this evidence I established a new monument and accessories as described hereon to perpetuate the original location of this corner.

Resident witnesses:

.....  
.....  
.....

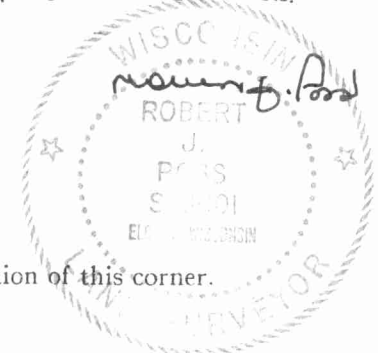
History of original corner establishment:

DORR SET STONE ON COR. ABOUT 1883; HUTCHINSON FOUND STONE - PUT A SECOND STONE ATOP DORR'S CIRCA 1922. REFERRED STONE TO OLD PIONEER SCHOOLHOUSE.

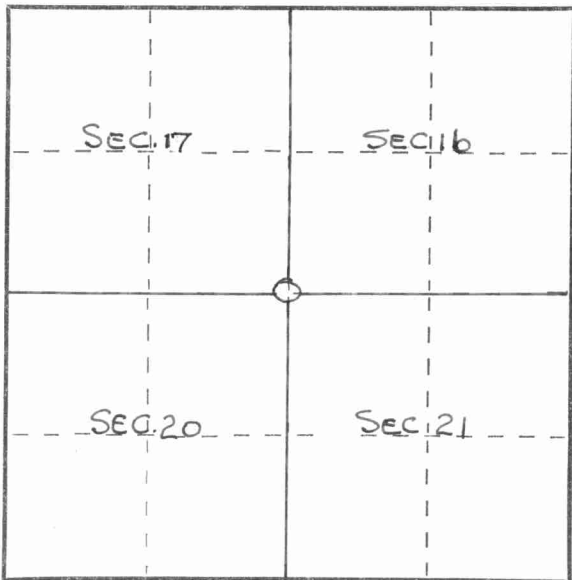
Description of corner evidence found:

PIONEER SCHOOL BLDG. ONLY REF. IS DELAPIDATED & MAY BE TORN DOWN SOON. STONE IS UNDER 62 FEET OF FILL ON HWY 64. SET TEMPORARY HUB. & REFERENCED IT.

Description of monument and accessories I established to perpetuate the original location of this corner.



SEE REVERSE SIDE FOR SKETCH.



○ = Corner monument restored.

Dated at ELCHO, Wis., this 28TH day of JULY, 1971.

Signature Robert J. Poss Title REG. LAND SURVEYOR Registration No. S-0001  
(County Surveyor, Registered Land Surveyor, or other duly authorized official)

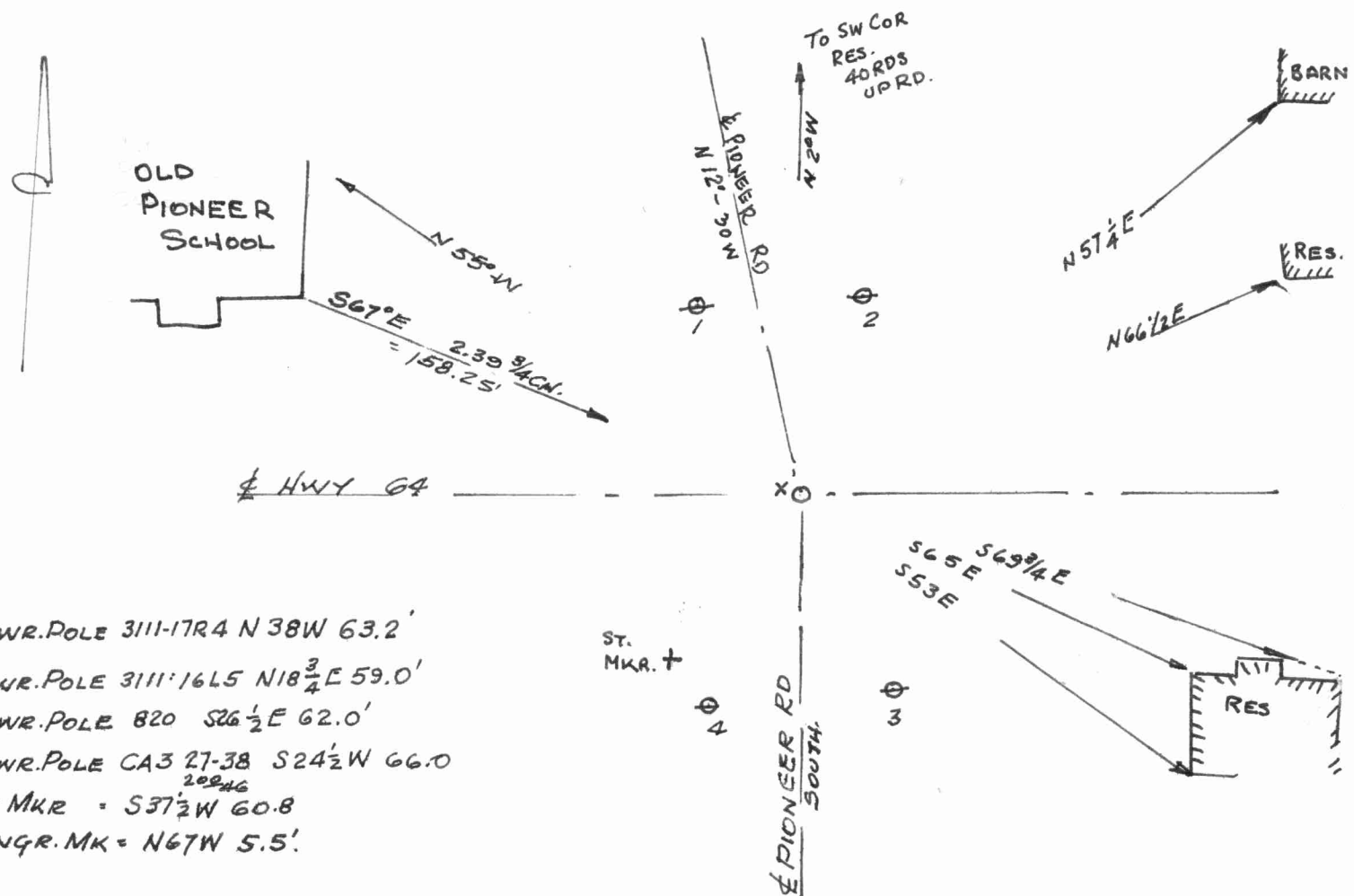
Office of Register of Deeds, County of \_\_\_\_\_, I hereby certify that the within instrument was filed in this office for record on the \_\_\_\_\_ day of \_\_\_\_\_, 19\_\_\_\_ at \_\_\_\_\_ o'clock \_\_\_\_\_ M.

.....  
(Register of Deeds)

By \_\_\_\_\_ Deputy

FORM 985 H. C. MILLER CO., MILWAUKEE  
43111170000

4311170000



- 1 = POWR. POLE 3111-17R4 N 38° W 63.2'
- 2 = POWR. POLE 3111-16L5 N 18 3/4° E 59.0'
- 3 = POWR. POLE 820 S 26 1/2° E 62.0'
- 4 = POWR. POLE CA3 27-38 S 24 1/2° W 66.0'
- 5 = ST. MKR. = S 37 1/2° W 60.8'
- X = ENGR. MK = N 67° W 5.5'