

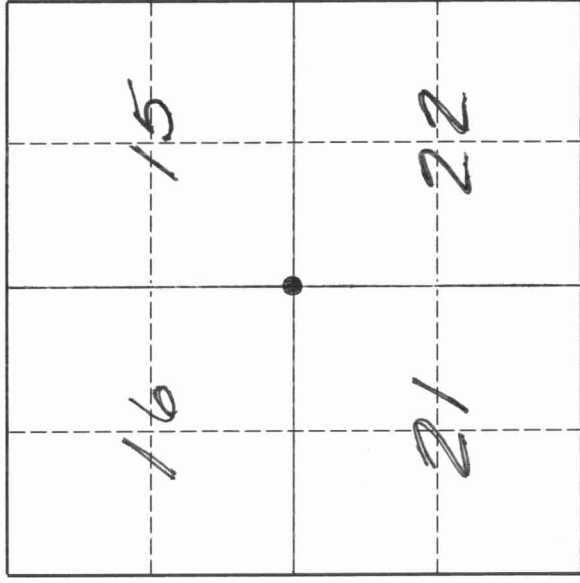
4311160000

U. S. PUBLIC LAND SURVEY MONUMENT RECORD

INSTRUCTIONS:

This record shall show the location of the corner and shall include all of the following nine elements (a through i).

- (a) Identify the corner by reference to the U.S. public land survey system.
- O = Corner monument restored.



The Northwest corner of Section 22, Township 31 North, Range 11 East, Langlade County, Wisconsin.

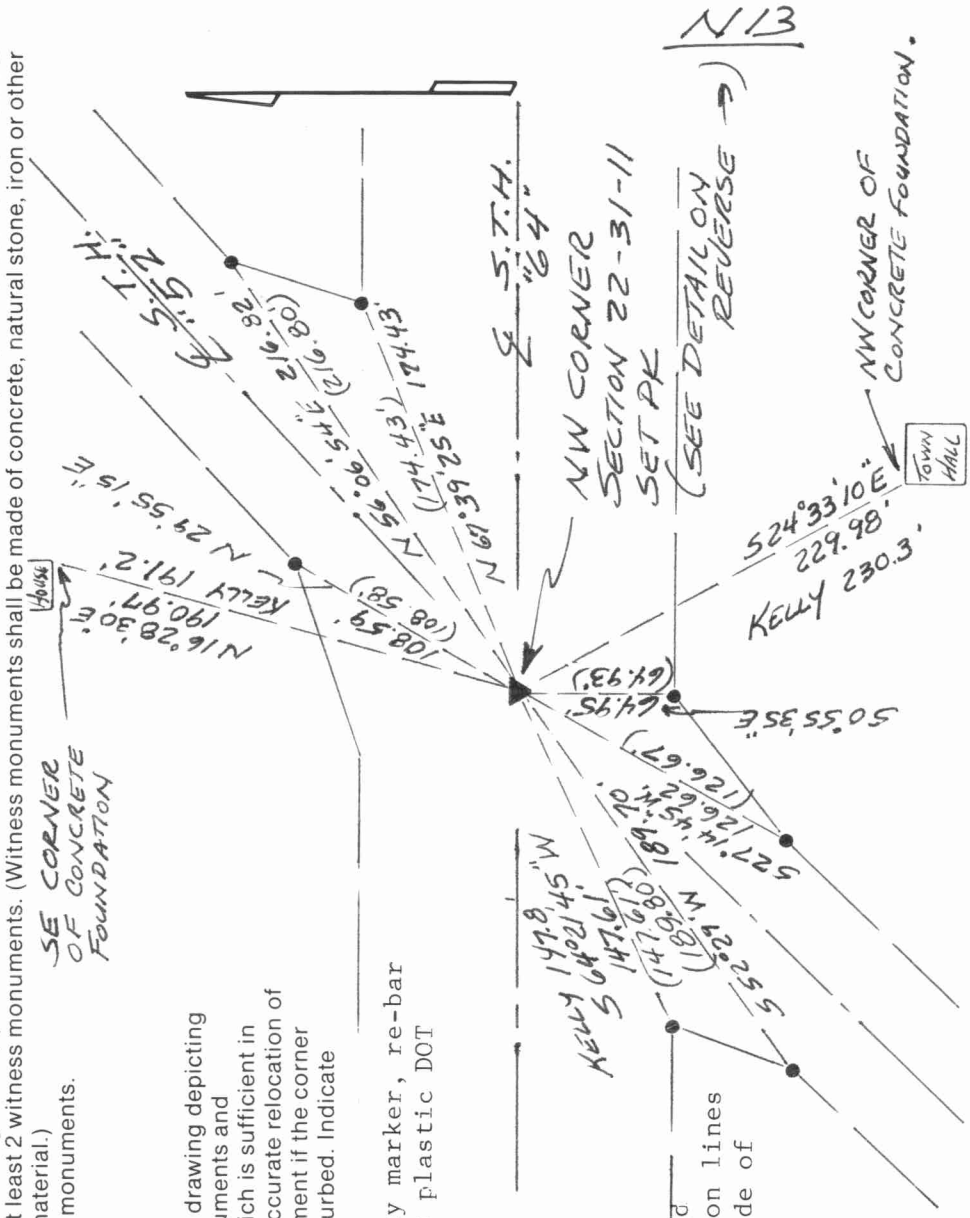
T. 31 N., R. 11 E.

- (b) Describe any record evidence, monument evidence, occupational evidence, testimonial evidence or any other material evidence you considered, and whether the monument was found or placed.
 The original corner was established in 1860 by Hiram C. Fellows. The corner was re-set and used for surveys of the airport property around 1976 by Donald Frisque, RLS. In 1985, former surveyor Kelly perpetuated the corner used by Frisque. In June, 1993, I find a railroad spike that does not work well with the Kelly ties. I re-set this corner based on computed distances from seven recovered right-of-way markers surrounding the intersection. The resulting corner position is then in general agreement with the measurements by Kelly. For the corner, I set a PK nail.

- (c) In the plan view drawing below, provide reference ties to at least 4 witness monuments, or, if the location is within a municipality, to at least 2 witness monuments. (Witness monuments shall be made of concrete, natural stone, iron or other equally durable material.) Describe witness monuments.

- (d) Show a plan view drawing depicting the relevant monuments and reference ties which is sufficient in detail to enable accurate relocation of the corner monument if the corner monument is disturbed. Indicate north.

- = right-of-way marker, re-bar with yellow plastic DOT cap found.



Bearings assumed and referenced to section lines shown on reverse side of this form.

TOWN HALL

NW CORNER OF CONCRETE FOUNDATION.

N 13

431116000

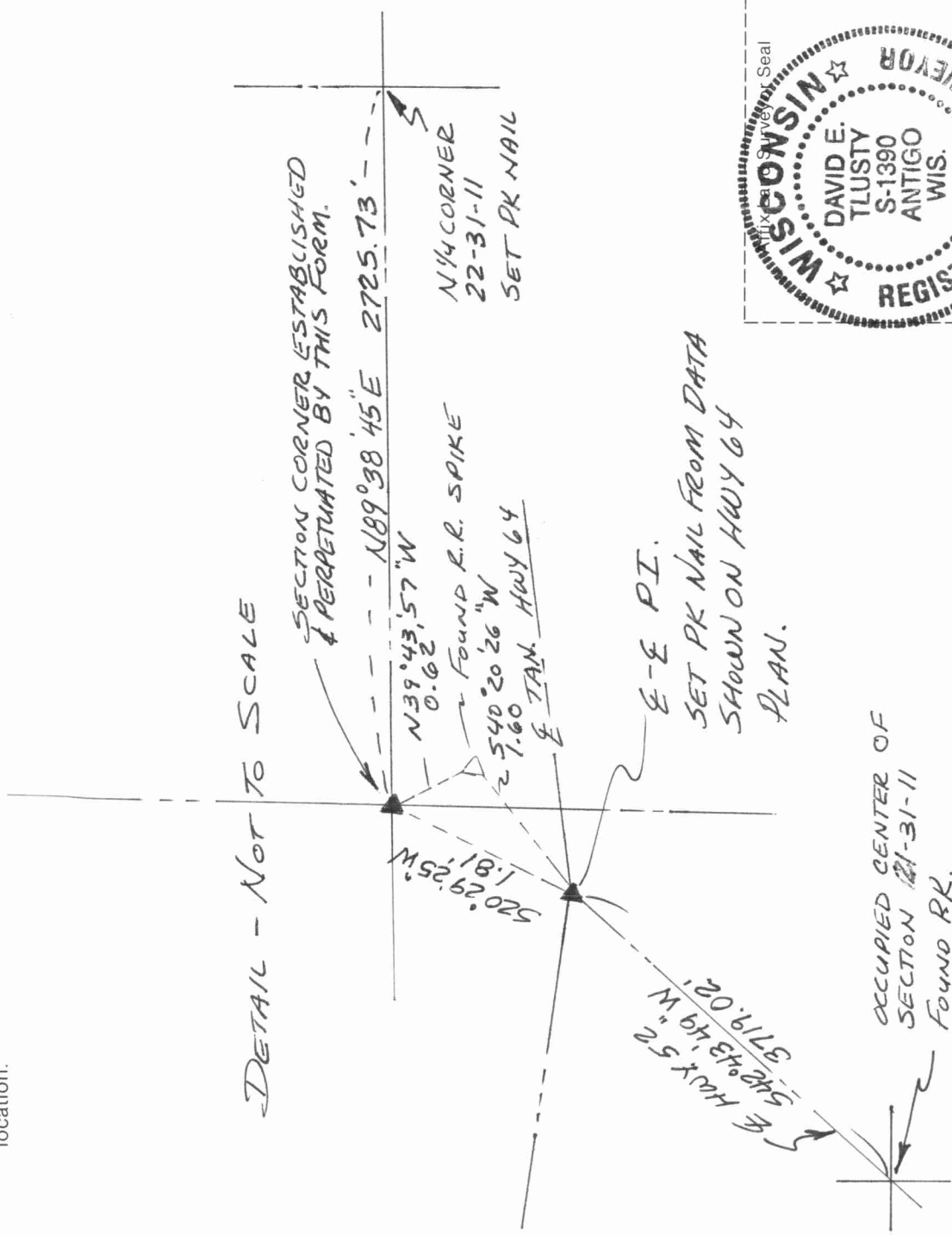
Describe any material discrepancy between the location of the corner as restored or reestablished and the location of that corner as previously restored or reestablished by distance and direction. Show the discrepancy on the plan view drawing under (d), above. Show the distances between the corner as previously restored or reestablished and (1) the corner as restored or reestablished, and (2) to at least 2 of the witness monuments shown on the drawing in (d), above.

- SEE DETAIL BELOW -

(f) Was the corner restored through acceptance of (1) an obliterated evidence location, or, (2) a found perpetuated location.?

(2) A FOUND PERPETUATED LOCATION - D.O.T. HWY. PLAN SHEET, & FORMER SURVEYOR KELLY TIE SHEET.

(g & h) Was the corner reestablished through lost corner proportionate methods? If so, show the method, including the directions and distances to other public land survey corners used as evidence or used for proportioning in determining the corner location.



(i) I, DAVID E. TLUSTY LANGLADE COUNTY SURVEYOR
(type or print name)

certify that the corner location shown on this record was determined by me or under my direction and control and that this U.S. Public Land Survey Monument Record is correct and complete to the best of my knowledge and belief.

David E. Tlusty Signature
Date 6/25/93