

CERTIFIED LAND CORNER RESTORATION

Index No. N-13

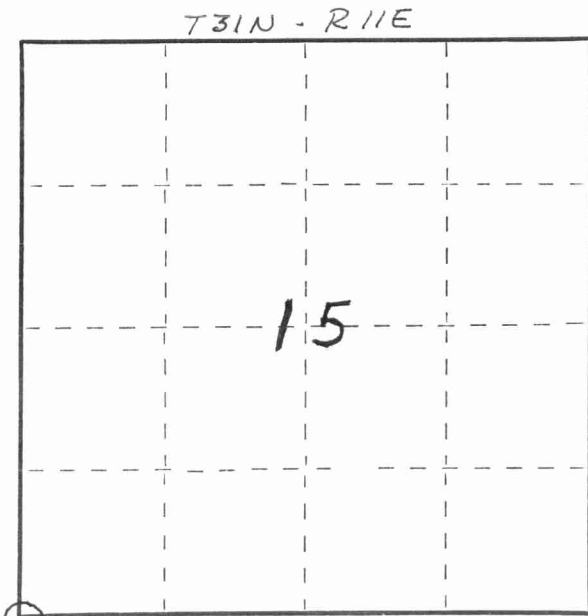
State of Wisconsin }
County of LANGLADE } ss.

I WILLIAM F. KELLY, do hereby certify that on the 7th day of JULY, 1978, I found evidence of the SECTION corner of SECTION 15-16-21-22 Township 31, North, Range 11E, Fourth Principal Meridian, as described hereon; and that from this evidence I established a new monument and accessories as described hereon to perpetuate the original location of this corner.

Resident witnesses:

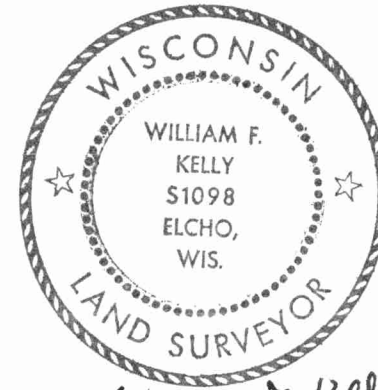
.....
.....
.....

FORM 985 H. C. MILLER CO., MILWAUKEE



○ = Corner monument restored.

History of original corner establishment:



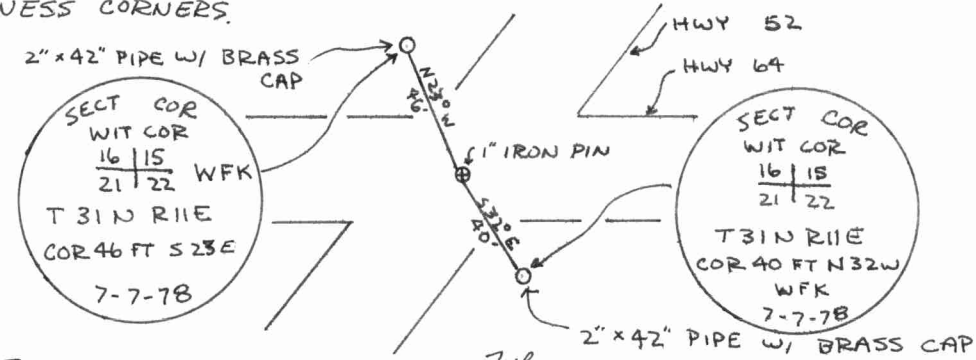
William F. Kelly

Description of corner evidence found:

LOCATED A 1" IRON PIN AT THE INTERSECTION OF HWY 52 AND HWY 64 SET BY BECHER-HOPPE ENGINEERS, INC.

Description of monument and accessories I established to perpetuate the original location of this corner.

SET WITNESS CORNERS.



Dated at ELCHO, Wis., this 7th day of JULY, 1978.

Signature William F. Kelly Title REGISTERED LAND SURVEYOR Registration No. S-1098
(County Surveyor, Registered Land Surveyor, or other duly authorized official)

Office of Register of Deeds, County of _____, I hereby certify that the within instrument was filed in this office for record on the _____ day of _____, 19____ at _____ o'clock _____ M.

.....
(Register of Deeds)

By _____ Deputy

4311160000

