

# LANGLADE COUNTY U.S. PUBLIC LAND CORNER RESTORATION

The East 1/4 corner of Section 15, T. 31 N., R. 11 E., Langlade County, WI.

**Corner was: (check all that apply)**

4311115 2000

- Restored through acceptance of an obliterated evidence location.
- Restored through acceptance of a found perpetuated location.
- Determined to be lost and re-established through proportionate methods.
- Show bearings and distances to PLSS corners used for proportioning, and show original distances).
- Restored/recovered/re-established in a location that differs from a previously established position.
- (Show difference in plan view below).
- Check here if additional information is shown on the reverse side of this form.

**Describe record evidence, recovered physical evidence, occupational evidence, testimonial evidence and all other evidence considered in the recovery/restoration of the corner.**

The original corner was established in 1860 by Hiram C. Fellows. Original bearing trees: elm, 10", S30° W, 7 links and a fir, 6", S40°E, 10 links. In 1884 (FB140-12) B.F. Dorr measured the North half of the East line of Section 15 as 40.24 chains (2655.84') and also surveyed in the NW 1/4 of Section 14 and used the N1/16th between Sections 14 & 15, in 1907 (FB94-36) E.S. Brooks called the North 1/16th corner between 14 & 15 a "Stone set by Brooks". On 04/23/1996, D. Tlusty, Tom Arnott and Mike Kielcheski dug with backhoe and found the north 1/16th corner stone. Also dug for this quarter corner but found nothing. There is a large underground electric cable in the road at this location. The installation of that cable may have destroyed evidence of the quarter corner. To re-establish this corner, I doubled the distance from the NE corner of 15 through the recovered 1/16th corner stone and on an extension of said line, I set the monument as described below.

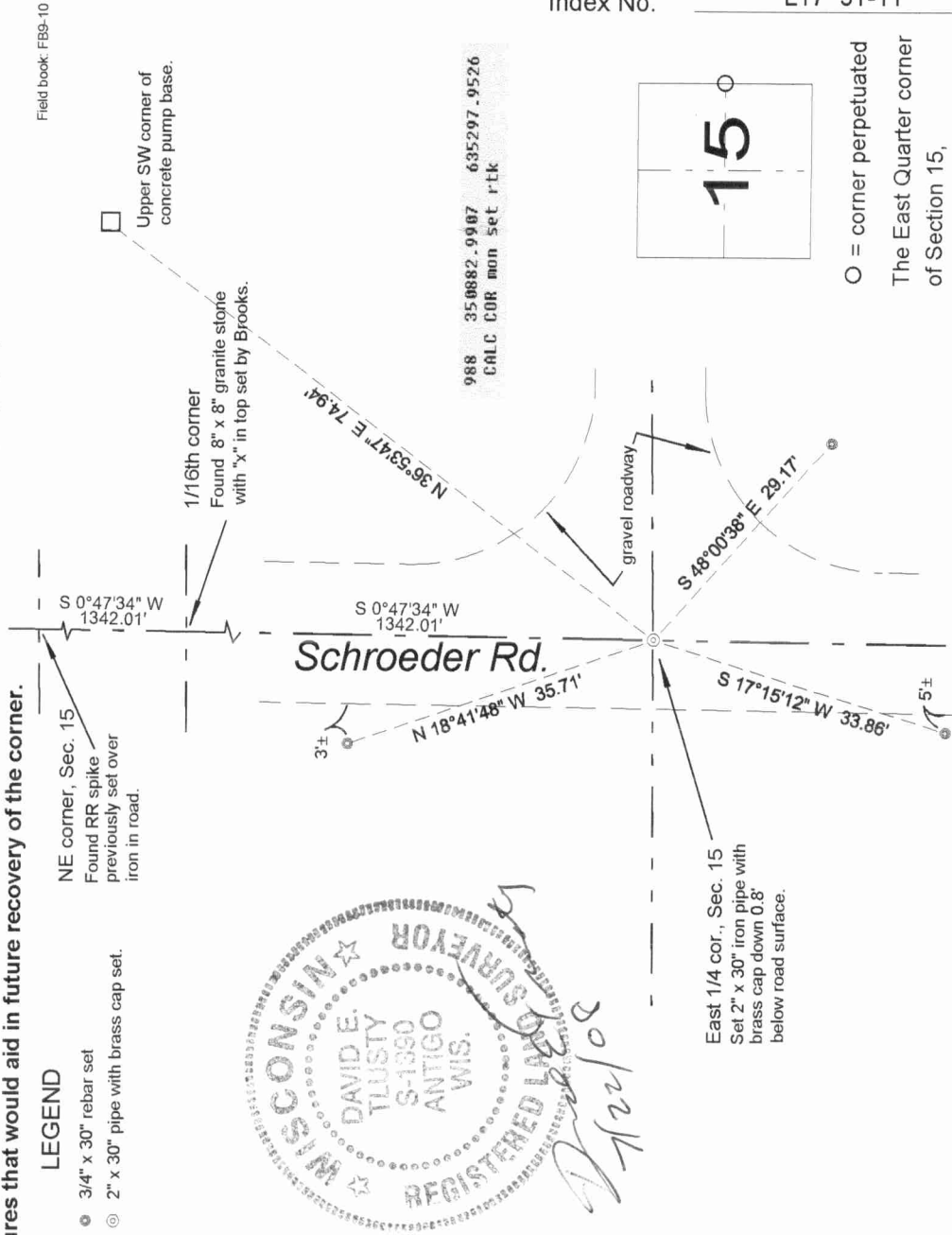
**Physical description of the monument set:**

I set a new 2" x 30" galvanized iron pipe with 3 1/4" dia. brass cap, top of which is 0.8' below the gravel road surface.

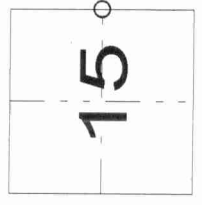
**Describe the accessories used to perpetuate the corner. Include a plan view drawing and accessories found/set. Describe measuring point on bearing trees. Show any topographic features that would aid in future recovery of the corner.**

**LEGEND**

- 3/4" x 30" rebar set
- ⊙ 2" x 30" pipe with brass cap set.



Index No. L17 31-11



○ = corner perpetuated  
The East Quarter corner of Section 15,  
T. 31 N., R. 11 E.,  
Langlade County, WI

I, David E. Tlusty, Registered Land Surveyor, as Langlade County Surveyor, certify that the corner location on this record was determined by me and that this U.S. Public Land Survey Monument Record is correct to the best of my knowledge and belief.

