

CERTIFIED LAND CORNER RESTORATION

Index No. N-14

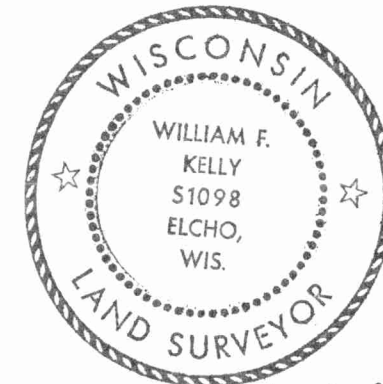
State of Wisconsin }
County of LANGLADE } ss.

History of original corner establishment:

I WILLIAM F. KELLY, do hereby certify that on the 7th day of JULY, 1978, I found evidence of the EAST 1/2 corner of SECTION 15-22 Township 31, North, Range 11 E, Fourth Principal Meridian, as described hereon; and that from this evidence I established a new monument and accessories as described hereon to perpetuate the original location of this corner.

Description of corner evidence found:

LOCATED A 1" IRON PIN IN CENTER OF HWY 64 SET BY BELCHER-HOPPE ENGINEERS, INC.

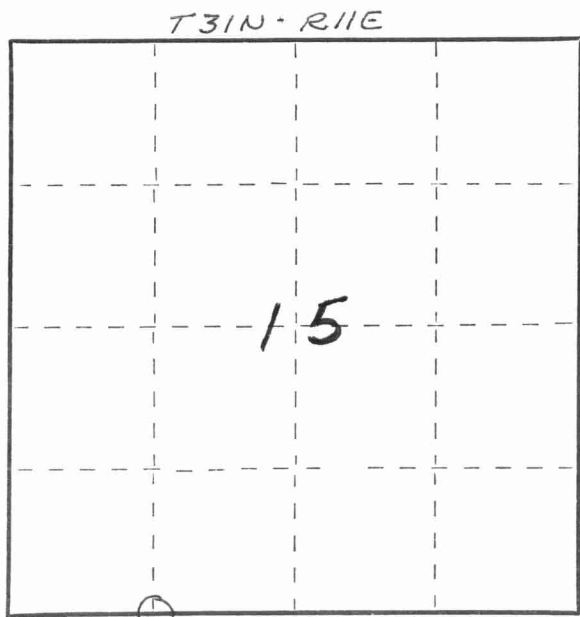
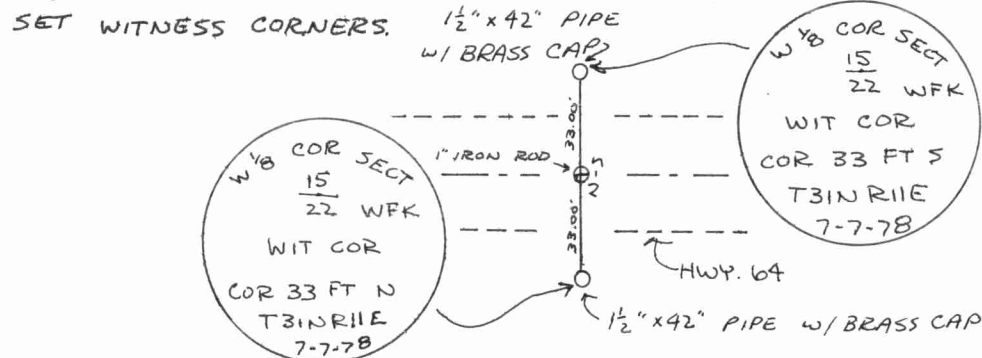


William F. Kelly

Resident witnesses:

.....
.....
.....

Description of monument and accessories I established to perpetuate the original location of this corner.



○ = Corner monument restored.

Dated at ELCHO, Wis., this 7th day of JULY, 1978.

Signature William F. Kelly Title REGISTERED LAND SURVEYOR Registration No. S-1098
(County Surveyor, Registered Land Surveyor, or other duly authorized official)

Office of Register of Deeds, County of, I hereby certify that the within instrument was filed in this office for record on the day of, 19..... at o'clock M.

.....
(Register of Deeds)

By Deputy

FORM 985 H. C. MILLER CO., MILWAUKEE
4311150030

