

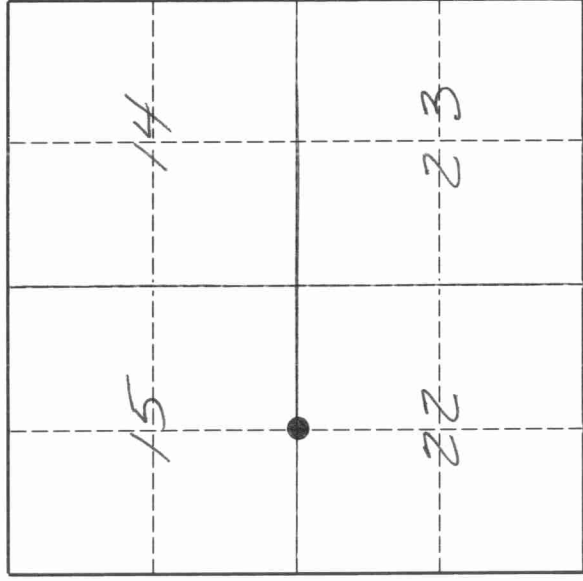
43/11150020

U. S. PUBLIC LAND SURVEY MONUMENT RECORD

INSTRUCTIONS:

This record shall show the location of the corner and shall include all of the following nine elements (a through i).

- (a) Identify the corner by reference to the U.S. public land survey system.
- = Corner monument restored.



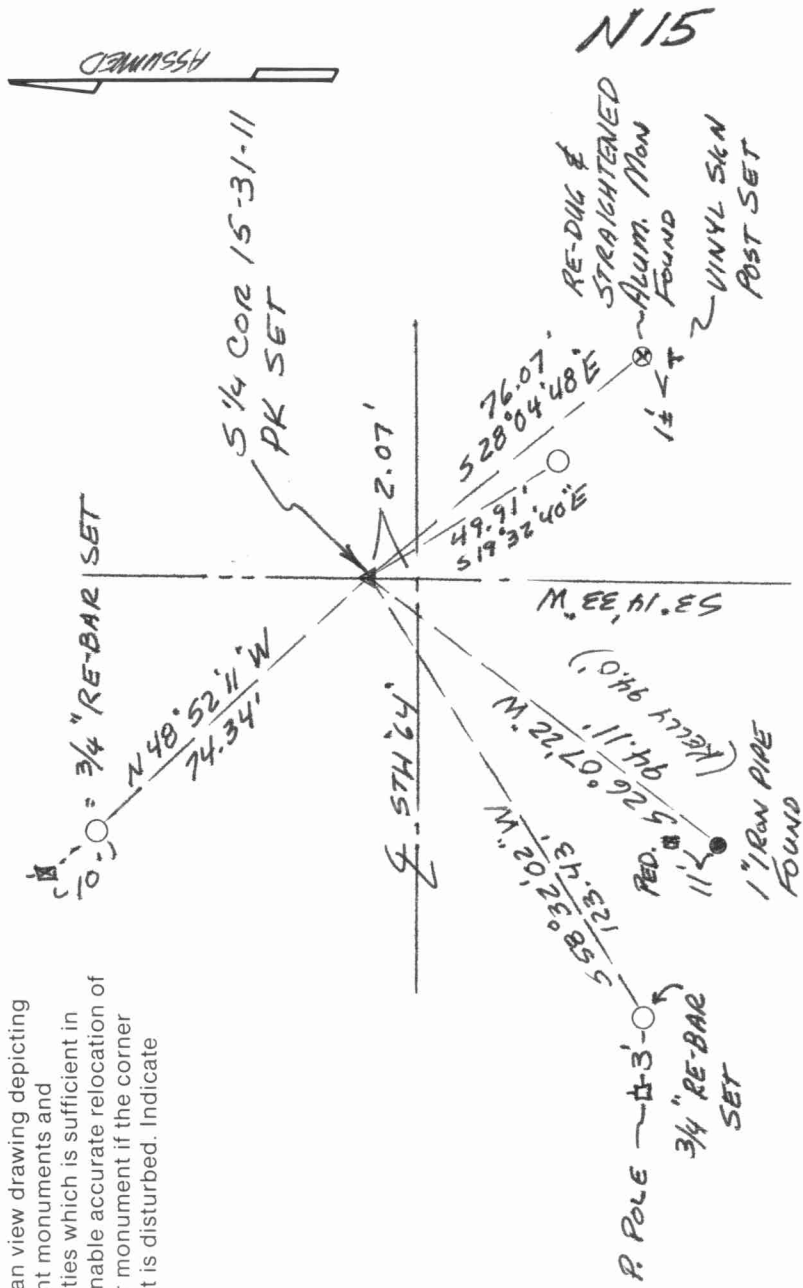
T. 31 N., R. 11 E

The South Quarter corner of Section 15, Township 31 North, Range 11 East, Langlade County, Wisconsin.

- (b) Describe any record evidence, monument evidence, occupational evidence, testimonial evidence or any other material evidence you considered, and whether the monument was found or placed.
The original corner was established in 1860 by Hiram C. Fellows. In 1978, former surveyor Kelly perpetuated the corner which was established by Becher-Hoppe Eng. for airport survey work. In 1988, former surveyor Kelly set new witness monuments to clear highway construction. In 1993, I found a RR spike in the highway. Kellys north tie was destroyed. His SE tie was leaning and loose. His SW tie was in place. Not being able to confirm the RR spike from one remaining tie, and having no corner form saying that a RR spike was set after the re-construction of Highway "64", I re-set the corner on an extension of a line from the center of Section 22 through the CN 1/16 corner of Section 22 and at double the distance between those two corners as shown on the reverse side of this form. Set PK nail for the corner which falls N 26°00'48" W, 1.02' from the RR spike.

- (c) In the plan view drawing below, provide reference ties to at least 4 witness monuments, or, if the location is within a municipality, to at least 2 witness monuments. (Witness monuments shall be made of concrete, natural stone, iron or other equally durable material.)
Describe witness monuments.

- (d) Show a plan view drawing depicting the relevant monuments and reference ties which is sufficient in detail to enable accurate relocation of the corner monument if the corner monument is disturbed. Indicate north.



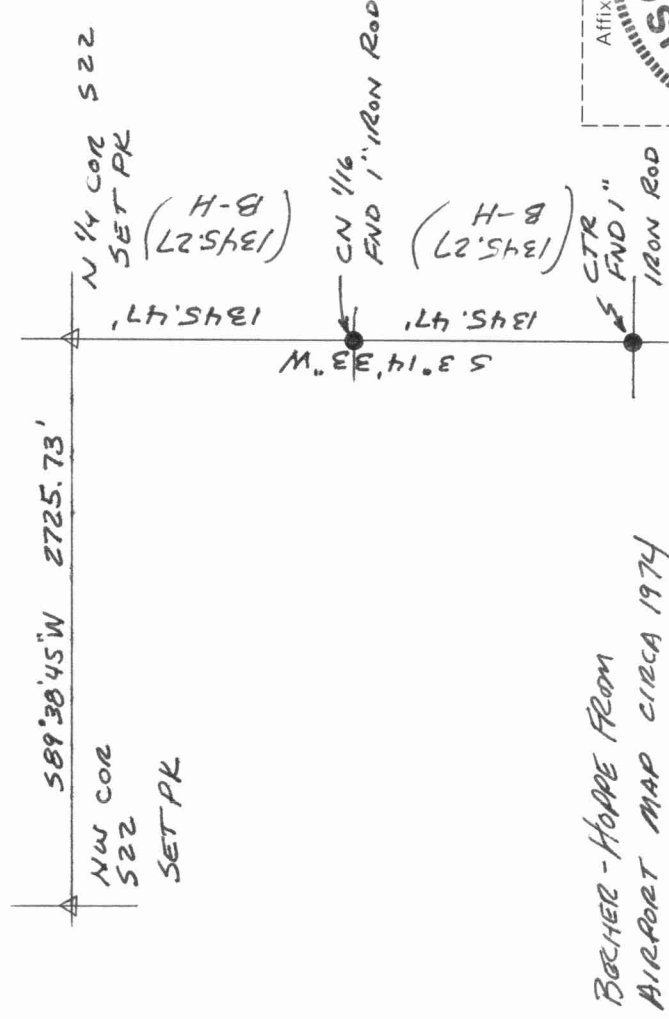
4311150020

Describe any material discrepancy between the location of the corner as restored or reestablished and the location of that corner as previously restored or reestablished by distance and direction. Show the discrepancy on the plan view drawing under (d), above. Show the distances between the corner as previously restored or reestablished and (1) the corner as restored or reestablished, and (2) to at least 2 of the witness monuments shown on the drawing in (d), above.

See (b) on front side of this form.

- (f) Was the corner restored through acceptance of (1) an obliterated evidence location, or, (2) a found perpetuated location.?
See (b) on front side of this form.

- (g & h) Was the corner reestablished through lost corner proportionate methods? If so, show the method, including the directions and distances to other public land survey corners used as evidence or used for proportioning in determining the corner location.



"B-H" - BOEHER-HOPPE FROM AIRPORT MAP CIRCA 1974



(i) I, DAVID E. TLUSTY CANEAU COUNTY SURVEYOR
(type or print name)

certify that the corner location shown on this record was determined by me or under my direction and control and that this U.S. Public Land Survey Monument Record is correct and complete to the best of my knowledge and belief.

David E. Tlusty 12/29/93
Signature Date