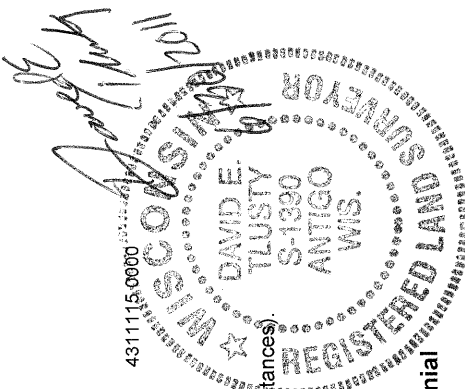


LANGLADE COUNTY U.S. PUBLIC LAND CORNER RESTORATION

The Southeast corner of Section 15, T. 31 N., R. 11 E., Langlade County, WI.

Corner was: (check all that apply)

- Restored through acceptance of an obliterated evidence location.
- Restored through acceptance of a found perpetuated location.
- Determined to be lost and re-established through proportionate methods.
- Show bearings and distances to PLSS corners used for proportioning, and show original distances.
- Restored/recovered/re-established in a location that differs from a previously established position.
- (Show difference in plan view below).
- Check here if additional information is shown on the reverse side of this form.



Describe record evidence, recovered physical evidence, occupational evidence, testimonial evidence and all other evidence considered in the recovery/restoration of the corner.

The original corner was established in 1860 by Hiram C. Fellows. Original bearing trees: w pine, 14", N15E, 18 links and a w pine, 10", N44W 27 links. In 1878, Deleglise (FB144-31) mentions this corner and found two original bts: pine, 22", N16°1/2E, 22 1/3 links and a pine, 16", N44W, 27 links. He added two new bts: pine, 16", S22E, 21 1/2 links and an elm, 11", S51W, 57 2/3 links. In 1881±, Dorr (FB140-105) stated "Ogl fieldnotes reasona correct". In 1885, Dorr (Fb140-19) measured 41.12 chains (2714') from this corner to the quarter corner to the west. In July 1978, former surveyor Kelly said "Located a 1" iron pin in center of Hwy. 64 set by Becher-Hoppe Engineers, Inc." He set two witness monuments. In 1988 Kelly "Set new Wit. monuments to clear road for construction". He shows a RR spike for the corner and measured to ties to the south and southwest. In 2003, I found and shot RTK GPS on a RR spike. 12/06/2004 I set control points in area to save corners from a future repaving project. 6/15/11 DT checked into control points at set a nail at the location previously shot in 2004. However, after measuring to recovered pipe on CSM 2-216 and a DOT r/w rebar NW I realized that the previous RR spike found does not fit the CSM or the DOT rebar. Therefore, I computed the corner location based on said CSM as shown below. This location is S 68°49' E, 1.12 feet from the RR spike found in 2004.

Physical description of the monument set:

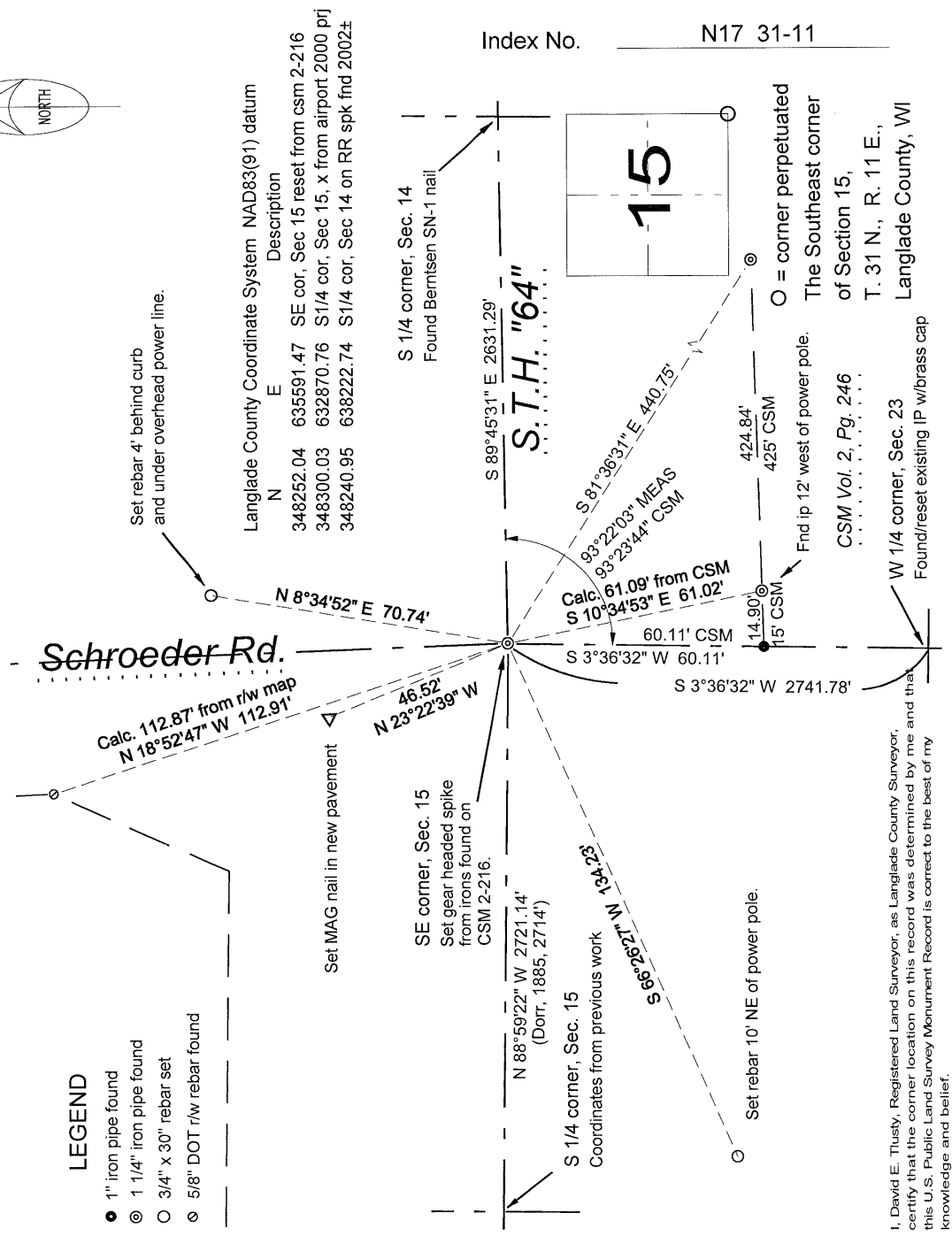
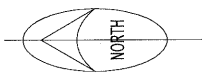
I set a 6" gear headed spike to mark the corner.

Describe the accessories used to perpetuate the corner. Include a plan view drawing and accessories found/set. Describe measuring point on bearing trees. Show any topographic features that would aid in future recovery of the corner.

LEGEND

- 1" iron pipe found
- ⊙ 1 1/4" iron pipe found
- 3/4" x 30" rebar set
- ⊙ 5/8" DOT r/w rebar found

Field book: FB9-64



I, David E. Tusty, Registered Land Surveyor, as Langlade County Surveyor, certify that the corner location on this record was determined by me and that this U.S. Public Land Survey Monument Record is correct to the best of my knowledge and belief.