

CERTIFIED LAND CORNER RESTORATION

Index No. N-17

State of Wisconsin }
County of LANGLADE } ss.

I WILLIAM F. KELLY, do hereby certify that on the 6th day of JULY, 1978, I found evidence of the SECTION corner of SECTION 14-15-22-23 Township 31, North, Range 11E, Fourth Principal Meridian, as described hereon; and that from this evidence I established a new monument and accessories as described hereon to perpetuate the original location of this corner.

Resident witnesses:

.....
.....
.....

History of original corner establishment:

Description of corner evidence found:

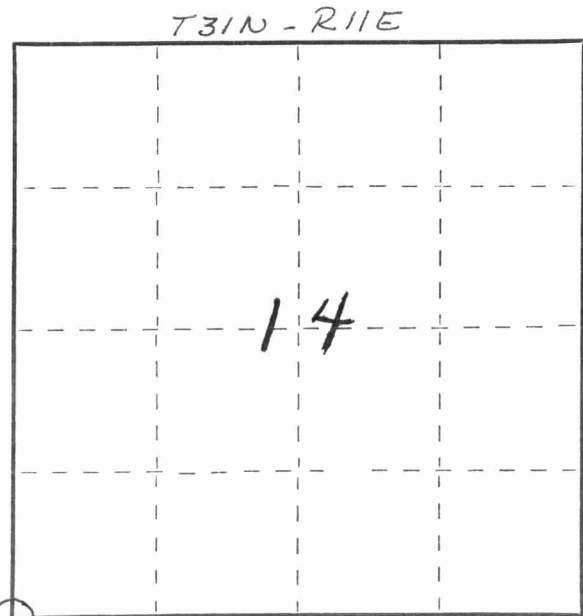
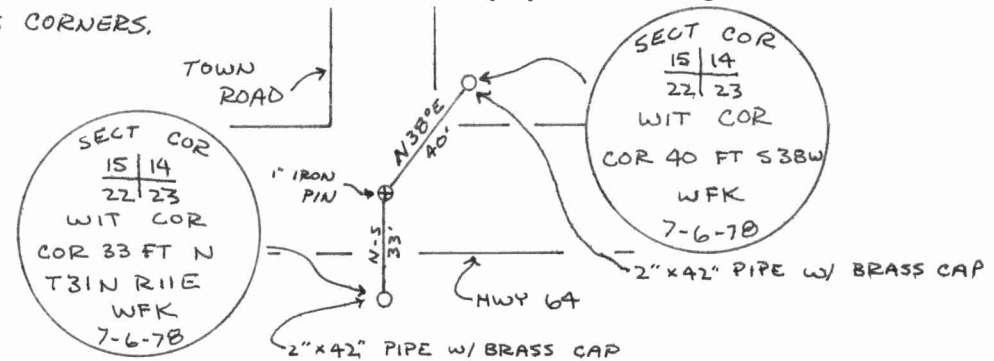
LOCATED A 1" IRON PIN IN CENTER OF HWY 64 SET BY BECHER-HOPPE ENGINEERS, INC.



William F. Kelly

Description of monument and accessories I established to perpetuate the original location of this corner.

SET WITNESS CORNERS.



○ = Corner monument restored.

Dated at ELCHO, Wis., this 6th day of JULY, 1978.

Signature William F. Kelly Title REGISTERED LAND SURVEYOR Registration No. 5-1098
(County Surveyor, Registered Land Surveyor, or other duly authorized official)

Office of Register of Deeds, County of _____, I hereby certify that the within instrument was filed in this office for record on the _____ day of _____, 19____ at _____ o'clock _____ M.

.....
(Register of Deeds)

By..... Deputy

FORM 985 H. C. MILLER CO., MILWAUKEE

4311150000

