

4311140020

U.S. PUBLIC LAND SURVEY MONUMENT RECORD

(Prepared and as required by S. A-E 7.08 WI Administrative Code)

The SOUTH 1/4 corner of Section 14, T. 31 N., R. 11 E., Langlade County, WI
Corner was (check all that apply)

- Restored through acceptance of an obliterated evidence location.
- Restored through acceptance of a found perpetuated location.
- Determined to be lost and re-established through proportionate methods. (show bearings and distances to PLSS corners used for proportioning.)
- Restored/recovered/re-established in a location that differs from a previously established position. (Show difference in plan view below.)
- Check here if additional information is shown on the reverse side of this form.

Describe record evidence, recovered physical evidence, occupational evidence, testimonial evidence, and all other evidence considered in the recovery/restoration of the corner.

Original - September 1860, H.C. Fellows set corner post and marked Bearing Trees, Sugar 8", N30°E, 20 links, and Sugar 10", S33°W, 3 links.

1981 - Surveyor Arnott, performing a survey in Section 23, referenced a "pk nail found" at this location.

1988 - Former Surveyor Kelly found a railroad spike at this location and set new ties to clear a highway construction project, utilizing three iron pipes, and one three inch aluminum monument per the Monument Record he prepared.

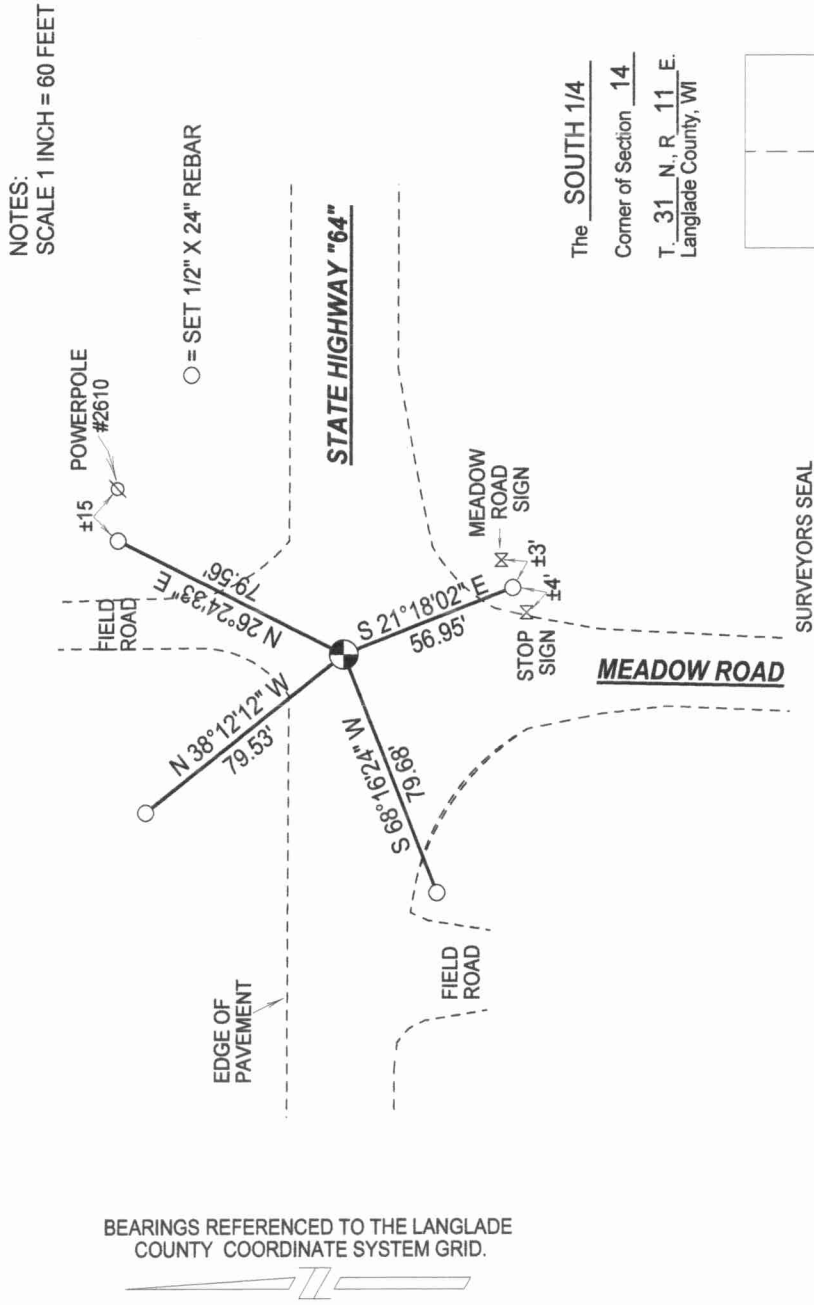
2002 - County Surveyor Tlusty established coordinates for this corner prior to a highway construction project.

2008 - I found no evidence of the monument or ties referenced by Kelly, and re-set the corner location per Tlusty's coordinates.

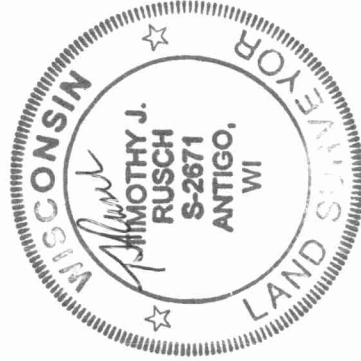
Physical description of the monument set:

2008 - I set a Berntsen SN-1 nail at the corner. I set four new rebars and tied out the corner as shown below.

Describe the accessories used to perpetuate the location of the corner. Include a plan view drawing and indicate accessories found/set. Describe measuring point on bearing trees. Show any topographic features that would aid in future recovery of the corner.

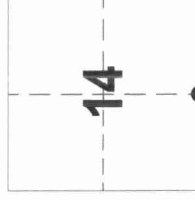


SURVEYORS SEAL



I, Timothy J. Rusch certify that the corner location shown on this record was determined by me or under my direction and control and that this U.S. Public Land Survey Monument Record is correct and complete to the best of my knowledge and belief.

Timothy J. Rusch 11-13-2008
Signature Date



● = Location of corner

