

CERTIFIED LAND CORNER RESTORATION

Index No. N-19

State of Wisconsin }
County of Langlade } ss.

I Thomas R. Arnott, do hereby certify that on the 22 day of Oct, 1981, I found evidence of the 1/4 corner of sections 14 and 23 Township 31, North, Range 11 E, Fourth Principal Meridian, as described hereon; and that from this evidence I established a new monument and accessories as described hereon to perpetuate the original location of this corner.

History of original corner establishment:

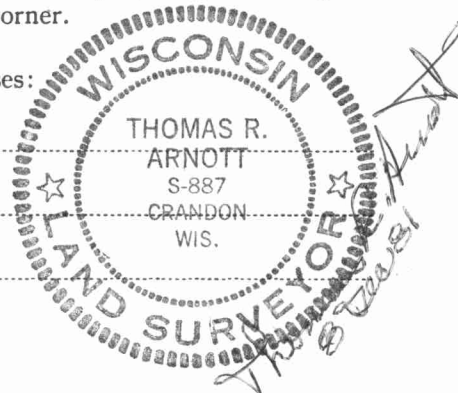
Orig. by Heraice Fellows
Sept. 1 thru Sept. 6, 1860

Sugar 8 N30E 20 lks
Sugar 10 S55W 5 lks

Description of corner evidence found:

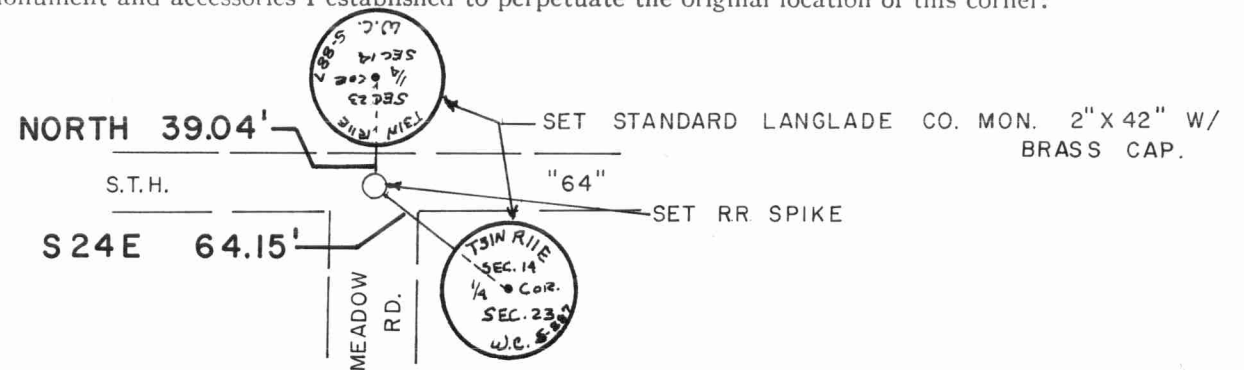
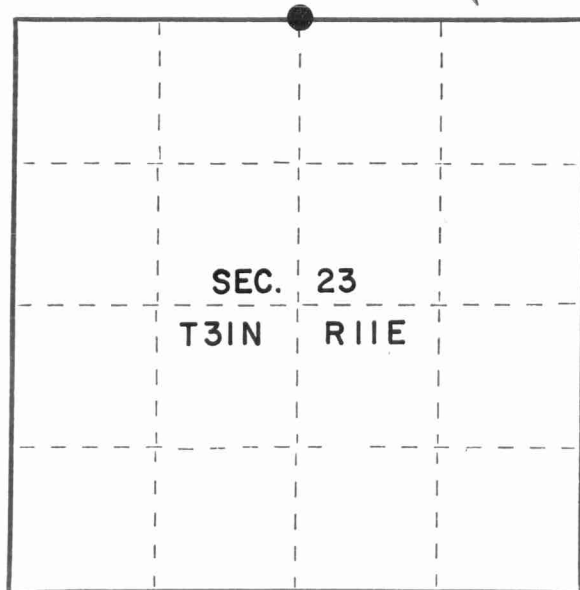
Found P.K. nail in center of S.T.H, "64" and the intersection of Meadow Road.

Resident witnesses:



Removed P.K. nail and set R.R. spike.

Description of monument and accessories I established to perpetuate the original location of this corner.



Dated at Crandon, Wis., this 8th day of December, 1981.

Signature Thomas R. Arnott Title Surveyor Registration No. S-887
(County Surveyor, Registered Land Surveyor, or other duly authorized official)

Office of Register of Deeds, County of Langlade, I hereby certify that the within instrument was filed in this office for record on the _____ day of _____, 19____ at _____ o'clock _____ M.

(Register of Deeds)

By _____ Deputy

FORM 985 H. C. MILLER CO., MILWAUKEE
4311140020

○ = Corner monument restored.

1000