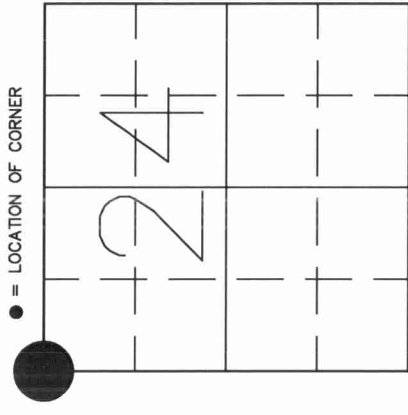


431114000

# U.S. PUBLIC LAND SURVEY MONUMENT RECORD

HISTORY OF ORIGINAL CORNER ESTABLISHMENT AND SUBSEQUENT RESTORATION AND DESCRIPTION OF ANY RECORD, MONUMENT OCCUPATIONAL, TESTIMONIAL OR OTHER EVIDENCE CONSIDERED:

THE ORIGINAL CORNER WAS ESTABLISHED IN 1860 BY H.C. FELLOWS. ORIGINAL BT'S: 9"ELM S83W 16LKS., 10" POPPLE N53W 11LKS.  
 IN 1988, KELLY SET "WITNESS MONUMENTS TO CLEAR ROAD CONSTRUCTION" AND SUBSEQUENT SURVEYORS REESTABLISHED THE CORNER WITH A RR SPIKE.  
 DAVE TLUSTY, COUNTY SURVEYOR, LOCATED THE RR SPIKE BEFORE ANOTHER ROUND OF ROAD CONSTRUCTION.  
 IN DECEMBER 2005, JAKE JENSEN AND GERRY BAHAR OBTAINED THE COORDINATES FROM TLUSTY TO REESTABLISH THE CORNER, AND SET A SN-1 NAIL AT THE CL INTERSECTION OF COUNTY BB AND HWY 64, AND TIED OUT AS SHOWN BELOW.



SECTION 24  
 TOWNSHIP 31 NORTH, RANGE 11 EAST  
 TOWN OF ANTIGO  
 LANGLADE COUNTY, WISCONSIN

CORNER WAS: (CHECK ALL THAT APPLY)

- RESTORED THROUGH ACCEPTANCE OF AN OBLITERATED EVIDENCE LOCATION
- RESTORED THROUGH ACCEPTANCE OF A FOUND PERPETUATED LOCATION
- CONSIDERED A LOST CORNER AND REESTABLISHED THROUGH LOST CORNER PROPORTIONATE METHODS (INCLUDE A PLAN VIEW DRAWING SHOWING DISTANCES AND DIRECTIONS TO OTHER PUBLIC LAND SURVEY CORNERS USED FOR PROPORTIONING AND DETERMINING THE CORNER LOCATION)
- RESTORED OR REESTABLISHED IN A LOCATION THAT DIFFERS FROM A PREVIOUS RESTORATION OR REESTABLISHMENT (INCLUDE A PLAN VIEW DRAWING AND INDICATE WHAT WAS SET AND/OR FOUND)
- CHECK IF THERE IS ADDITIONAL INFORMATION ON BACK

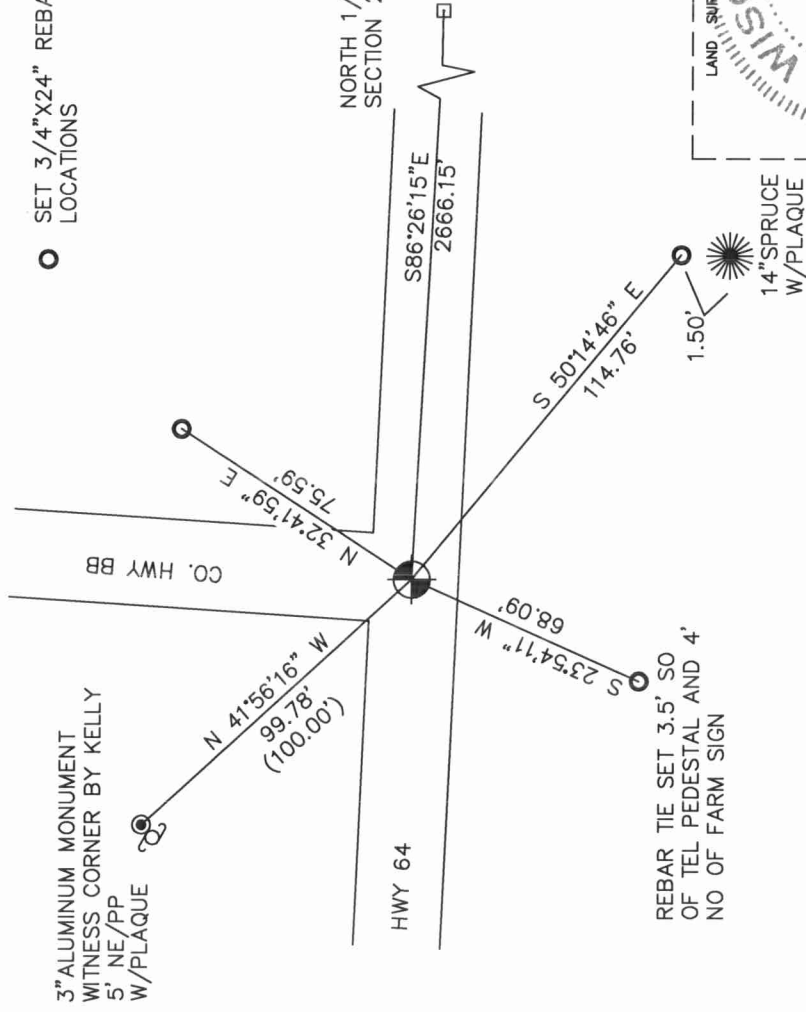
DESCRIBE THE MONUMENT AND ACCESSORIES USED TO PERPETUATE THE LOCATION OF THE CORNER. (INCLUDE A PLAN VIEW DRAWING AND INDICATE WHAT WAS SET AND/OR FOUND) ALSO INCLUDE FOUR TIES TO THE SECTION CORNER AND DESCRIPTION OF THE TIES.



SET SN-1 NAIL IN PAVEMENT, CLCL



SET 3/4"X24" REBARS AT TIE LOCATIONS



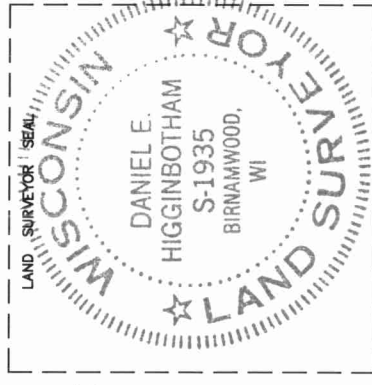
DANIEL E. HIGGINBOTHAM

(Type or print name) CERTIFY THAT THE CORNER LOCATION SHOWN ON THIS RECORD WAS DETERMINED BY ME OR UNDER MY DIRECTION AND CONTROL AND THAT THIS U.S. PUBLIC LAND SURVEY MONUMENT RECORD IS CORRECT AND COMPLETE TO THE BEST OF MY KNOWLEDGE AND BELIEF.

*Daniel E. Higginbotham*  
 SIGNATURE

12/06/05

DATE



INDEX NO.

