

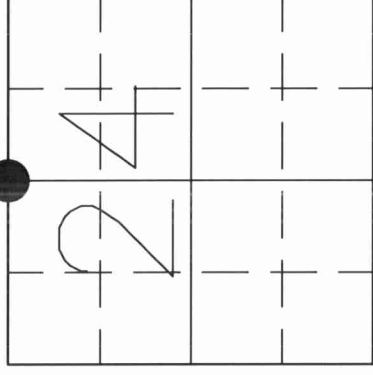
4311130020

U.S. PUBLIC LAND SURVEY MONUMENT RECORD

HISTORY OF ORIGINAL CORNER ESTABLISHMENT AND SUBSEQUENT RESTORATION AND DESCRIPTION OF ANY RECORD, MONUMENT OCCUPATIONAL, TESTIMONIAL OR OTHER EVIDENCE CONSIDERED:

THE ORIGINAL 1/4 CORNER WAS ESTABLISHED IN 1860 BY H.C. FELLOWS. ORIGINAL BT'S: 6" SUGAR MAPLE N55E 16LKS., 8" SUGAR MAPLE STOE 7LKS.
 IN 1988, KELLY SET "WITNESS MONUMENTS TO CLEAR ROAD CONSTRUCTION" AND SUBSEQUENT SURVEYORS REESTABLISHED THE CORNER WITH A RR SPIKE.
 DAVE TLUSTY, COUNTY SURVEYOR, LOCATED THE RR SPIKE BEFORE ANOTHER ROUND OF ROAD CONSTRUCTION.
 IN DECEMBER, 2005, JAKE JENSEN AND GERRY BAHAR OBTAINED THE COORDINATES FROM TLUSTY TO REESTABLISH THE 1/4 CORNER AND SET A SN-1 NAIL AT THE CL INTERSECTION OF CLOVER RD AND HWY 64 AND TIED OUT AS SHOWN BELOW.

● = LOCATION OF CORNER



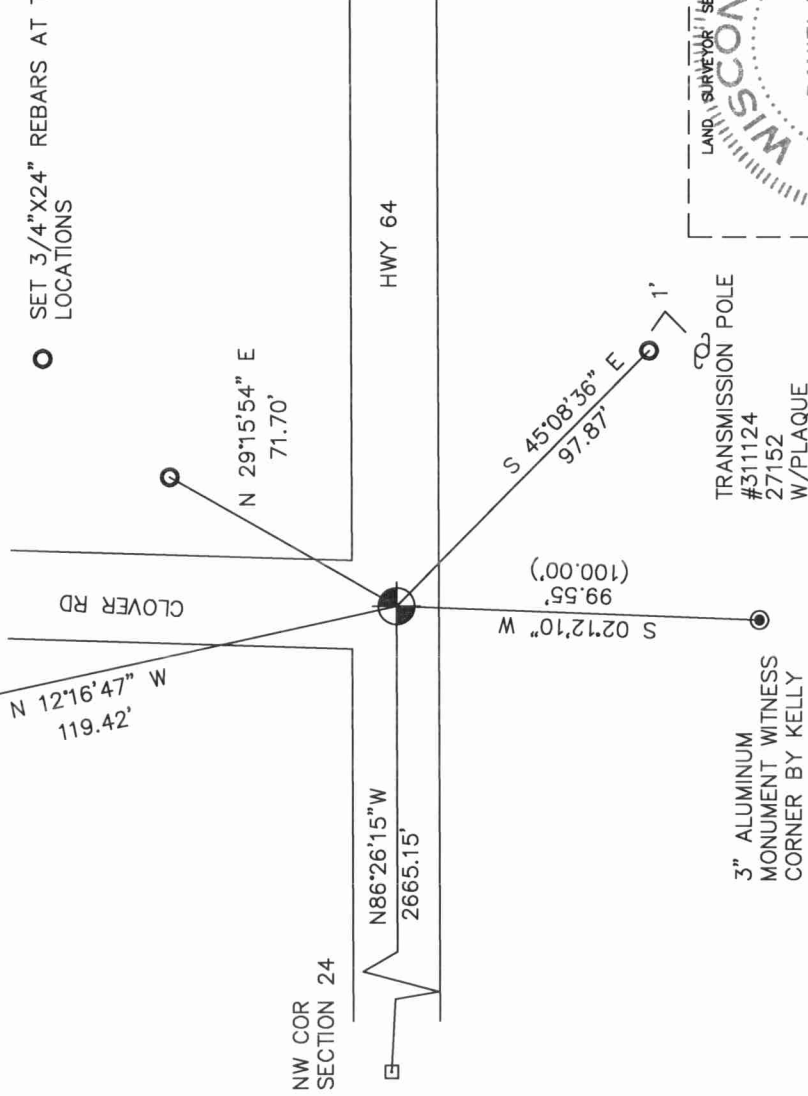
SECTION 24
 TOWNSHIP 31 NORTH, RANGE 11 EAST
 TOWN OF ANTIGO
 LANGLADE _____ COUNTY, WISCONSIN

CORNER WAS: (CHECK ALL THAT APPLY)

- RESTORED THROUGH ACCEPTANCE OF AN OBLITERATED EVIDENCE LOCATION
- RESTORED THROUGH ACCEPTANCE OF A FOUND PERPETUATED LOCATION
- CONSIDERED A LOST CORNER AND REESTABLISHED THROUGH LOST CORNER PROPORTIONATE METHODS (INCLUDE A PLAN VIEW DRAWING SHOWING DISTANCES AND DIRECTIONS TO OTHER PUBLIC LAND SURVEY CORNERS USED FOR PROPORTIONING AND DETERMINING THE CORNER LOCATION)
- RESTORED OR REESTABLISHED IN A LOCATION THAT DIFFERS FROM A PREVIOUS RESTORATION OR REESTABLISHMENT (INCLUDE A PLAN VIEW DRAWING AND INDICATE WHAT WAS SET AND/OR FOUND)
- CHECK IF THERE IS ADDITIONAL INFORMATION ON BACK

DESCRIBE THE MONUMENT AND ACCESSORIES USED TO PERPETUATE THE LOCATION OF THE CORNER. (INCLUDE A PLAN VIEW DRAWING AND INDICATE WHAT WAS SET AND/OR FOUND) ALSO INCLUDE FOUR TIES TO THE SECTION CORNER AND DESCRIPTION OF THE TIES.

- PP#311113L1 SET SN-1 NAIL IN PAVEMENT, CLCL
- SET 3/4"X24" REBARS AT TIE LOCATIONS



3" ALUMINUM
 MONUMENT WITNESS
 CORNER BY KELLY

TRANSMISSION POLE
 #311124
 27152
 W/PPLAQUE

DANIEL E. HIGGINBOTHAM

(Type or print name) CERTIFY THAT THE CORNER LOCATION SHOWN ON THIS RECORD WAS DETERMINED BY ME OR UNDER MY DIRECTION AND CONTROL AND THAT THIS U.S. PUBLIC LAND SURVEY MONUMENT RECORD IS CORRECT AND COMPLETE TO THE BEST OF MY KNOWLEDGE AND BELIEF.

Daniel E. Higginbotham
 SIGNATURE

12/06/05
 DATE

