

# U.S. PUBLIC LAND SURVEY MONUMENT RECORD

(Prepared and as required by S. A-E 7.08 WI Administrative Code)

The EAST 1/4 corner of Section 12, T. 31 N., R. 11 E., Langlade County, WI  
Corner was (check all that apply)

- Restored through acceptance of an obliterated evidence location.
- Restored through acceptance of a found perpetuated location.
- Determined to be lost and re-established through proportionate methods. (show bearings and distances to PLSS corners used for proportioning.)
- Restored/recovered/re-established in a location that differs from a previously established position. (Show difference in plan view below.)
- Check here if additional information is shown on the reverse side of this form.

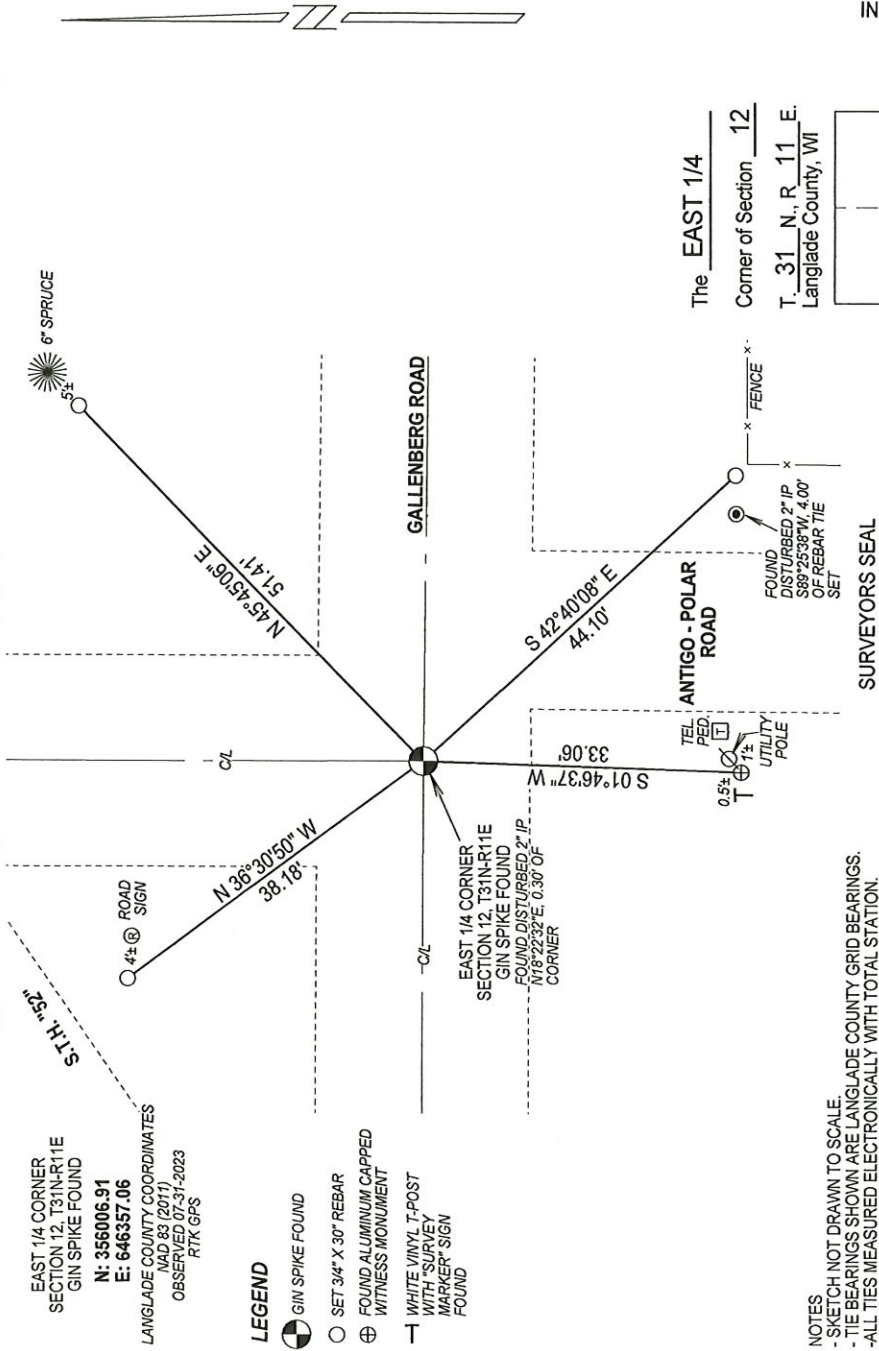
## Describe record evidence, recovered physical evidence, occupational evidence, testimonial evidence, and all other evidence considered in the recovery/restoration of the corner.

- 1860 - Original corner established by A. Millard - bearing trees: Lynn, 18", N59°W, 22 links; Lynn, 18", S86°E, 12 links.
- 1879 - Fieldbook 144 Page 40 Deleglise notes original BTs were "badley rotten", added two new bearing trees; Elm, 7", S50°W, 23 links; and Elm, 9", N41°W, 48 links.
- 1916 - Hutchinson noted "stake in road set pump point for corner" in fieldbook 122 page 71.
- 1979 - William Kelly "found stone with cross mark chiseled on top & 1" iron pipe, both in road, same location." Kelly monumented corner with a 2"x42" iron pipe with brass cap, made ties and filed a tie sheet.
- 2023 - I found a gin spike at corner location matching remaining tie. Found a 2" iron pipe leaning Northeast (hit by machinery), N18°22'32"E, 0.30' of gin spike.

## Physical description of the monument set:

Accepted gin spike as corner location and tied out as shown below.

Describe the accessories used to perpetuate the location of the corner. Include a plan view drawing and indicate accessories found/set. Describe measuring point on bearing trees. Show any topographic features that would aid in future recovery of the corner.



I, Michael J. Hoffman certify that the corner location shown on this record was determined by me or under my direction and control and that this U.S. Public Land Survey Monument Record is correct and complete to the best of my knowledge and belief.

Michael J. Hoffman Signature  
09-25-2023 Date

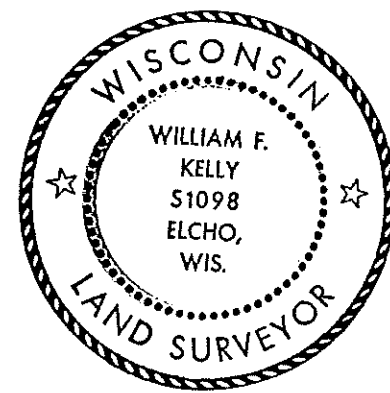
INDEX No. **G - 25** 4311112 2000

CERTIFIED LAND CORNER RESTORATION

Index No. G-25  
31-11

State of Wisconsin }  
County of LANGLADE } ss.

History of original corner establishment:



*William F. Kelly*

I WILLIAM F. KELLY, do hereby certify that on the 22<sup>nd</sup> day of JUNE, 1978, I found evidence of the N.E. 1/4 corner of SECTION 7 Township 31, North, Range 12E, Fourth Principal Meridian, as described hereon; and that from this evidence I established a new monument and accessories as described hereon to perpetuate the original location of this corner.

Description of corner evidence found:  
FOUND STONE WITH CROSS MARK CHISELED ON TOP & 1" IRON PIPE, BOTH IN ROAD, SAME LOCATION.

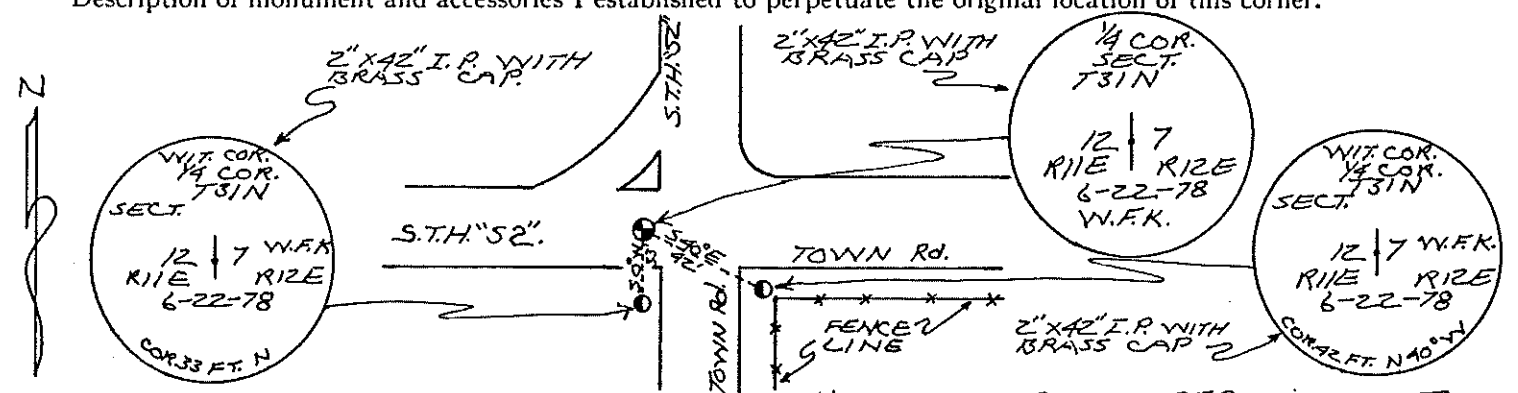
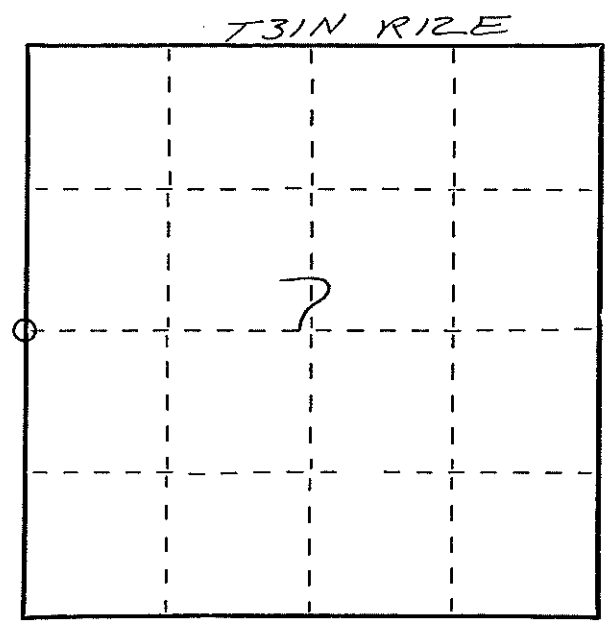
Resident witnesses:

MONUMENTED 1/4 CORNER WITH A 2" X 42" I.P. WITH BRASS CAP.  
SET TWO WITNESS CORNERS ALSO USING 2" X 42" I.P. WITH BRASS CAP AS SHOWN IN SKETCH.

Description of monument and accessories I established to perpetuate the original location of this corner.

FORM 985 N. C. MILLER CO., MILWAUKEE

43117-122 000



Dated at ELCHO, Wis., this 11 day of DECEMBER, 1978.

Signature William F. Kelly Title COUNTY SURVEYOR Registration No. 5-1098  
(County Surveyor, Registered Land Surveyor, or other duly authorized official)

Office of Register of Deeds, County of \_\_\_\_\_, I hereby certify that the within instrument was filed in this office for record on the \_\_\_\_\_ day of \_\_\_\_\_, 19\_\_\_\_ at \_\_\_\_\_ o'clock \_\_\_\_\_ M.

(Register of Deeds)

By \_\_\_\_\_ Deputy

○ = Corner monument restored.