

# LANGLADE COUNTY U.S. PUBLIC LAND CORNER RESTORATION

The Center of Section 10, T. 31 N., R. 11 E., Langlade County, WI.

**Corner was: (check all that apply)**

1/3111102020

- Restored through acceptance of an obliterated evidence location.
- Restored through acceptance of a found perpetuated location.
- Determined to be lost and re-established through proportionate methods.
- Show bearings and distances to PLSS corners used for proportioning, and show original distances).
- Restored/recovered/re-established in a location that differs from a previously established position.
- (Show difference in plan view below).
- Check here if addition information is shown on the reverse side of this form.

**Describe record evidence, recovered physical evidence, occupational evidence, testimonial evidence and all other evidence considered in the recovery/restoration of the corner.**

This corner was not monumented in the original government survey in 1860 by Hiram C. Fellows.

In 1914, Malcolm Hutchinson, ran the quarter lines and monumented this corner with an iron pipe and a buggy axle witness mon. N 57.5° E, 30.4'. In 1915, he used this corner for additional survey work in the SW 1/4 of Section 10. After measuring to fencelines within the section, it is obvious that they were laid out on the lines surveyed by Hutchinson. I accepted the location of an old nail found 0.3' below the existing pavement, as a previously restored corner. Although I have no records on who set this nail (2" long x 1/4" square) it fits Hutchinsons distances and existing fences very well.

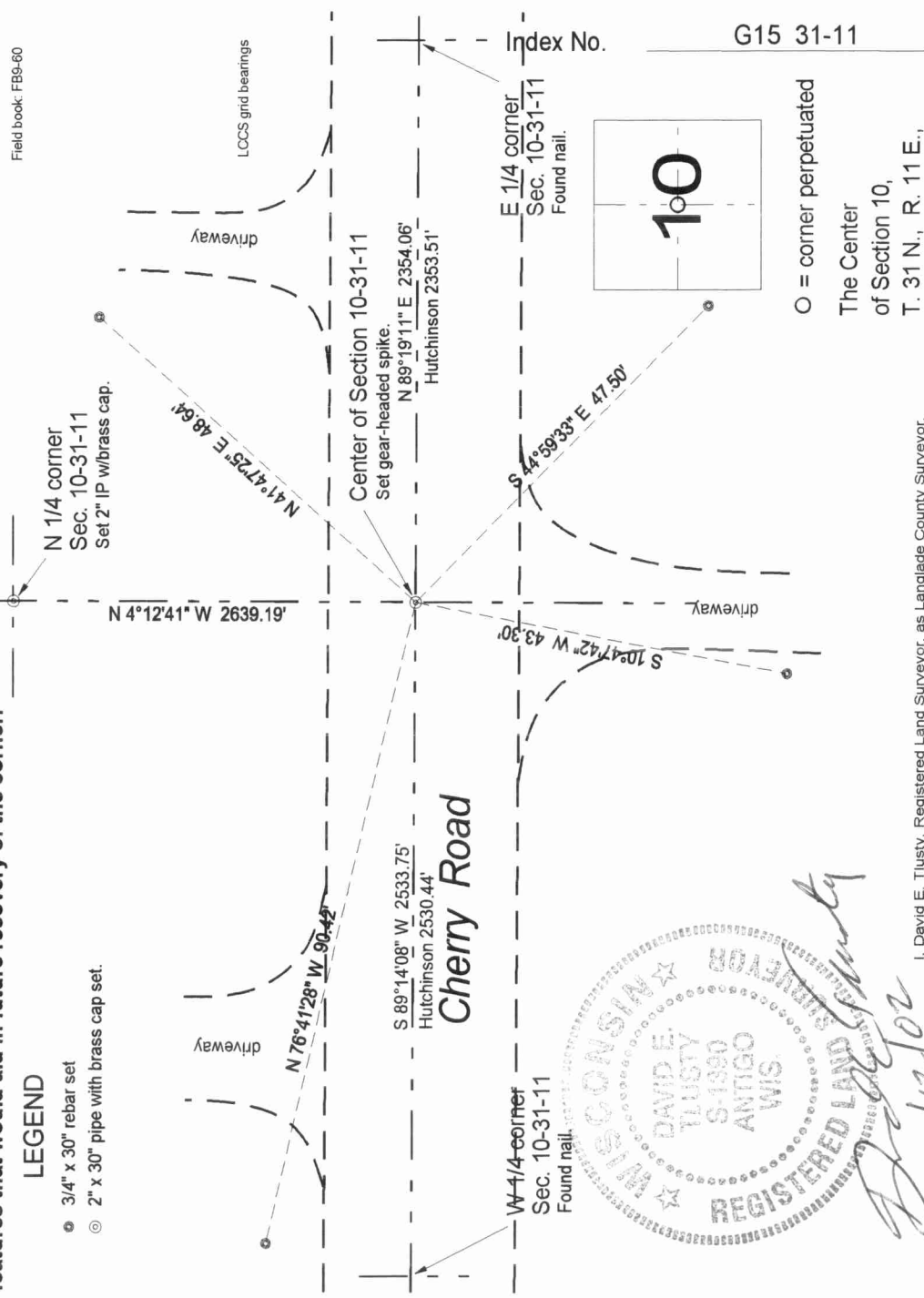
**Physical description of the monument set:**

I replaced the existing nail with a 1/2" x 4 1/2" gear-headed spike.

**Describe the accessories used to perpetuate the corner. Include a plan view drawing and accessories found/set. Describe measuring point on bearing trees. Show any topographic features that would aid in future recovery of the corner.**

**LEGEND**

- 3/4" x 30" rebar set
- ⊙ 2" x 30" pipe with brass cap set.



*David E. Tlusty*  
2/12/20

○ = corner perpetuated  
The Center of Section 10,  
T. 31 N., R. 11 E.,  
Langlade County, WI

I, David E. Tlusty, Registered Land Surveyor, as Langlade County Surveyor, certify that the corner location on this record was determined by me and that this U.S. Public Land Survey Monument Record is correct to the best of my knowledge and belief.

