

# LANGLADE COUNTY U.S. PUBLIC LAND CORNER RESTORATION

The South quarter corner of Section 10, T. 31 N., R. 11 E., Langlade County, WI.

**Corner was: (check all that apply)**

4311110 0020 2022

- Restored through acceptance of an obliterated evidence location.
- Restored through acceptance of a found perpetuated location.
- Determined to be lost and re-established through proportionate methods.
- Show bearings and distances to PLSS corners used for proportioning, and show original distances).
- Restored/recovered/re-established in a location that differs from a previously established position.
- (Show difference in plan view below).
- Check here if additional information is shown on the reverse side of this form.

**Describe record evidence, recovered physical evidence, occupational evidence, testimonial evidence and all other evidence considered in the recovery/restoration of the corner.**

The original corner was established in 1860 by Hiram C. Fellows. Original bearing trees: sugar, 12", S89E, 24 links and a spruce, 20", N83W, 26 links.

In 1914, Malcom Hutchinson (in FB94-Pg. 169) ran west from the SE corner of Section 10. At 32.32 ch (2146.32') he "hit 1/4 post Stone set by Brooks". In 1915 he ran west from this 1/4 post, "40.90 ch. (2699.4') to cor. Pump point".

06/18/2008 D. Tlusty, Tim Rusch, after searching field area with magnetic locators, set monument for the corner by proportionate measurement as stated below. This location checks well with distance to 16th corner to the East and record measurements as shown below. Did not dig for the stone mentioned by Hutchinson.

This corner was established on an extension of a ling from the SE corner of Section 10, westerly through a fence corner in the vicinity of the 16th corner, at which point Mr. Robert Parilek said there used to be a pipe, and by proportioning Hutchinsons distances as shown.

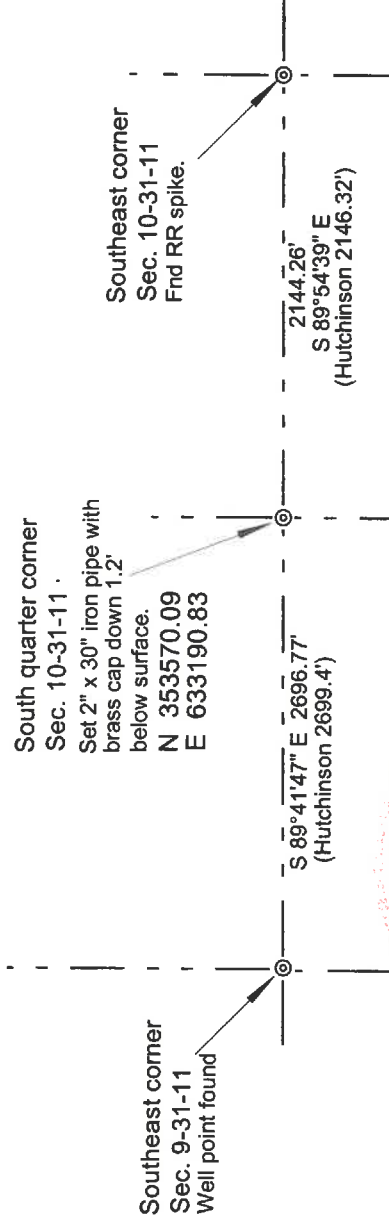
**Physical description of the monument set:**

I set a new 2" x 30" galvanized iron pipe with 3 1/4" dia. brass cap, top of which is 1.2' below the surface. Corner falls in wide open field. No ties set. See coordinates and distances to section corners below. See map 10961.

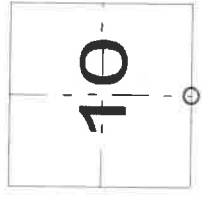
**Describe the accessories used to perpetuate the corner. Include a plan view drawing and accessories found/set. Describe measuring point on bearing trees. Show any topographic features that would aid in future recovery of the corner.**

**LEGEND**

- 3/4" x 30" rebar set
- ⊙ 2" x 30" pipe with brass cap set.



Index No. J17 31-11



○ = corner perpetuated  
The South quarter corner of Section 10,  
T. 31 N., R. 11 E.,  
Langlade County, WI

I, David E. Tlusty, Registered Land Surveyor, as Langlade County Surveyor, certify that the corner location on this record was determined by me and that this U.S. Public Land Survey Monument Record is correct to the best of my knowledge and belief.