

LANGLADE COUNTY U.S. PUBLIC LAND CORNER RESTORATION

The Southeast corner of Section 9, T. 31 N., R. 11 E., Langlade County, WI.

Corner was: (check all that apply)

- Restored through acceptance of an obliterated evidence location.
- Restored through acceptance of a found perpetuated location.
- Determined to be lost and re-established through proportionate methods.
- Show bearings and distances to PLSS corners used for proportioning, and show original distances).
- Restored/recovered/re-established in a location that differs from a previously established position.
- (Show difference in plan view below).
- Check here if additional information is shown on the reverse side of this form.

4311109 0000 2022

Describe record evidence, recovered physical evidence, occupational evidence, testimonial evidence and all other evidence considered in the recovery/restoration of the corner.

The original corner was established in 1860 by Hiram C. Fellows. Original bearing trees: elm, 10", N83° W, 33 links and and a sugar maple, 10", S43°E, 17 links.

In 1884, Dorr was working in Section 9 and said "E1/4 9, S1/4 P, W 1/4 P and SW cor 9 and W1/4 16 obliterated". In 1915, Webley, in FB100, Pg 67 said "pump point 1 1/4"x40" in place of old stake set by Dorr." It appears that Dorr may have re-established this corner in 1884 after he said it was obliterated.

In 1915, Malcolm Hutchinso, (FB94-Pg. 146) he ran west from the quarter corner of Sec 10 & 15, "40.90 ch. (2699.4') to cor. Pump point".
6/18/2008 D. Tlusty, T. Rusch went to a computed search area in wide open field and within 2 feet of our search area, dug and found old well point, top of which is 18" below ground. Nothing within 100 yards to tie to. See coordinates below and also map 10961.

Physical description of the monument set:

We left the existing well point in place.

Describe the accessories used to perpetuate the corner. Include a plan view drawing and accessories found/set. Describe measuring point on bearing trees. Show any topographic features that would aid in future recovery of the corner.

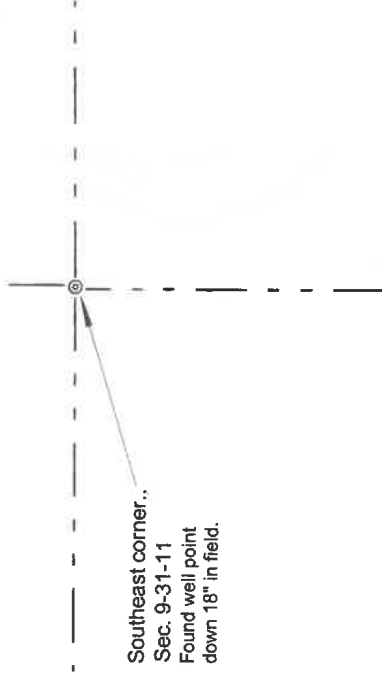
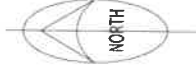
LEGEND

- 3/4" x 30" rebar set
- ⊙ 2" x 30" pipe with brass cap set.

Langlade County Coordinates NAD83(91)
N 353584.386 E 630494.104 SE cor Sec 9

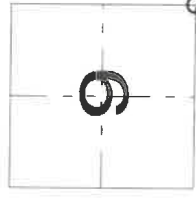


Field book: FB 9-82 &
FB 9-82



Index No.

J13 31-11



○ = corner perpetuated

The Southeast corner
of Section 9,
T. 31 N., R. 11 E.,
Langlade County, WI

I, David E. Tlusty, Registered Land Surveyor, as Langlade County Surveyor, certify that the corner location on this record was determined by me and that this U.S. Public Land Survey Monument Record is correct to the best of my knowledge and belief.