

# LANGLADE COUNTY U.S. PUBLIC LAND CORNER RESTORATION

The South quarter corner of Section 8, T. 31 N., R. 11 E., Langlade County, WI.

43111080020

**Corner was: (check all that apply)**

- Restored through acceptance of an obliterated evidence location.
- Restored through acceptance of a found perpetuated location.
- Determined to be lost and re-established through proportionate methods.
  - Show bearings and distances to PLSS corners used for proportioning, and show original distances).
  - Restored/recovered/re-established in a location that differs from a previously established position.
    - (Show difference in plan view below).
    - Check here if additional information is shown on the reverse side of this form.

**Describe record evidence, recovered physical evidence, occupational evidence, testimonial evidence and all other evidence considered in the recovery/restoration of the corner.**

The original corner was established in 1860 by Hiram C. Fellows. Original bearing trees: tamarac, 7", S35°W, 10 links, and a tamarac, 8", N30°E, 25 lks. In 1918, Malcolm Hutchinson "found hole where stake had been set stone 8 x 8 x 14 with + on top and 1/2" iron pipe underneath". In 1985, former surveyor Kelly established corner from control survey. In 1987, he found PK nail and replaced it with a railroad spike and set 4 witness monuments. In 1993, Dan Higginbotham "found two ties directly across from each other. Using these two ties, we re-established the location of this corner, and then placed additional ties". In April, 1999, prior to USH "45" reconstruction, I measured the ties shown below. During construction, we excavated the area in search of the stone mentioned by Hutchinson. Found nothing. Accepted the corner as established by Kelly and perpetuated as the best evidence of the corner.

**Physical description of the monument set:**

No monument has been re-set since the re-construction of USH "45".

**Describe the accessories used to perpetuate the corner. Include a plan view drawing and accessories found/set. Describe measuring point on bearing trees. Show any topographic features that would aid in future recovery of the corner.**

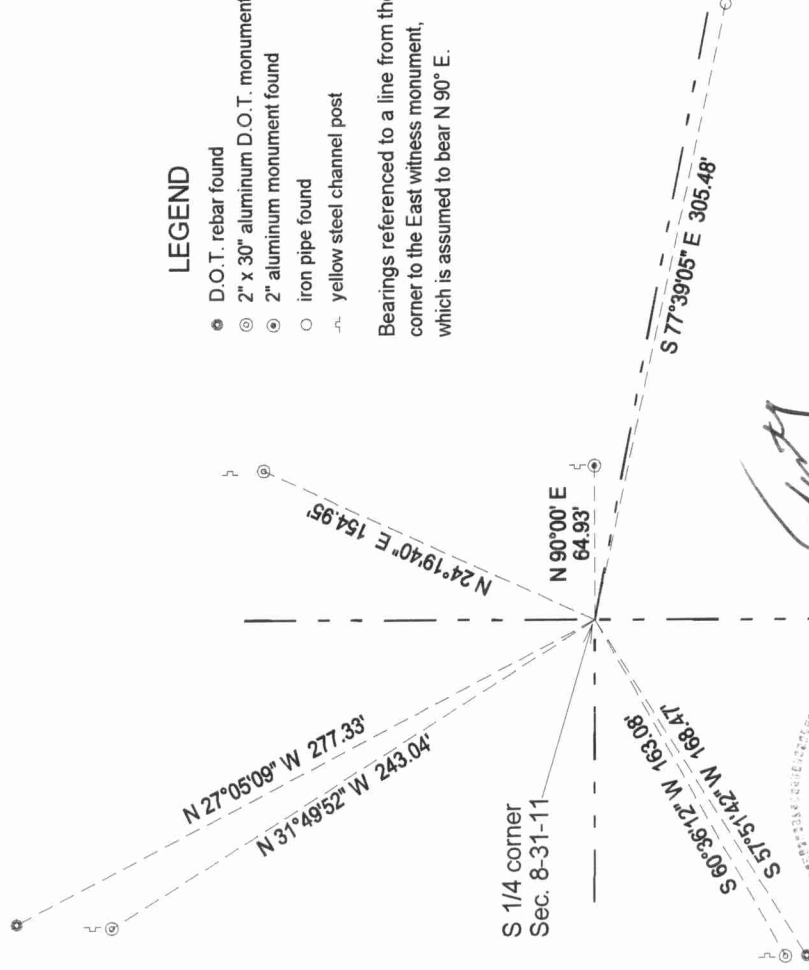
Field book: FB3-121



**LEGEND**

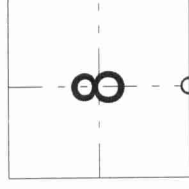
- D.O.T. rebar found
- ⊙ 2" x 30" aluminum D.O.T. monument set
- ⊙ 2" aluminum monument found
- iron pipe found
- yellow steel channel post

Bearings referenced to a line from the corner to the East witness monument, which is assumed to bear N 90° E.

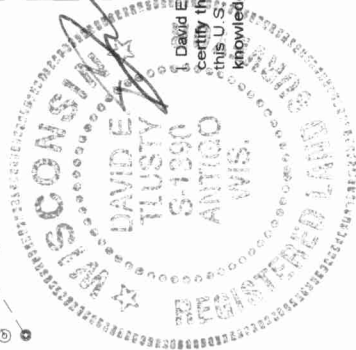


Index No. \_\_\_\_\_

J7 31-11



○ = corner perpetuated  
The South quarter corner of Section 8, T. 31 N., R. 11 E., Langlade County, WI



David E. Trusty, Registered Land Surveyor, as Langlade County Surveyor, certifies that the corner location on this record was determined by me and that this U.S. Public Land Survey Monument Record is correct to the best of my knowledge and belief.

