

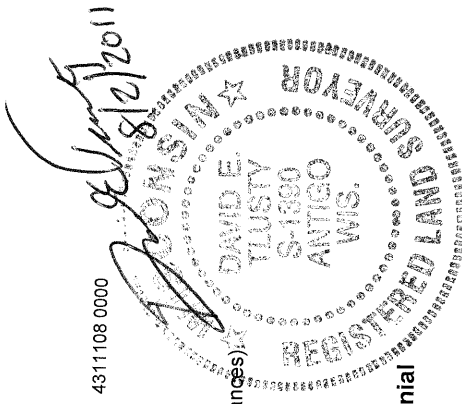
LANGLADE COUNTY U.S. PUBLIC LAND CORNER RESTORATION

The Southeast corner of Section 8, T. 31 N., R. 11 E., Langlade County, WI.

Corner was: (check all that apply)

- Restored through acceptance of an obliterated evidence location.
- Restored through acceptance of a found perpetuated location.
- Determined to be lost and re-established through proportionate methods.
- Show bearings and distances to PLSS corners used for proportioning, and show original distances.
- Restored/recovered/re-established in a location that differs from a previously established position.
- (Show difference in plan view below).
- Check here if additional information is shown on the reverse side of this form.

4311108 0000



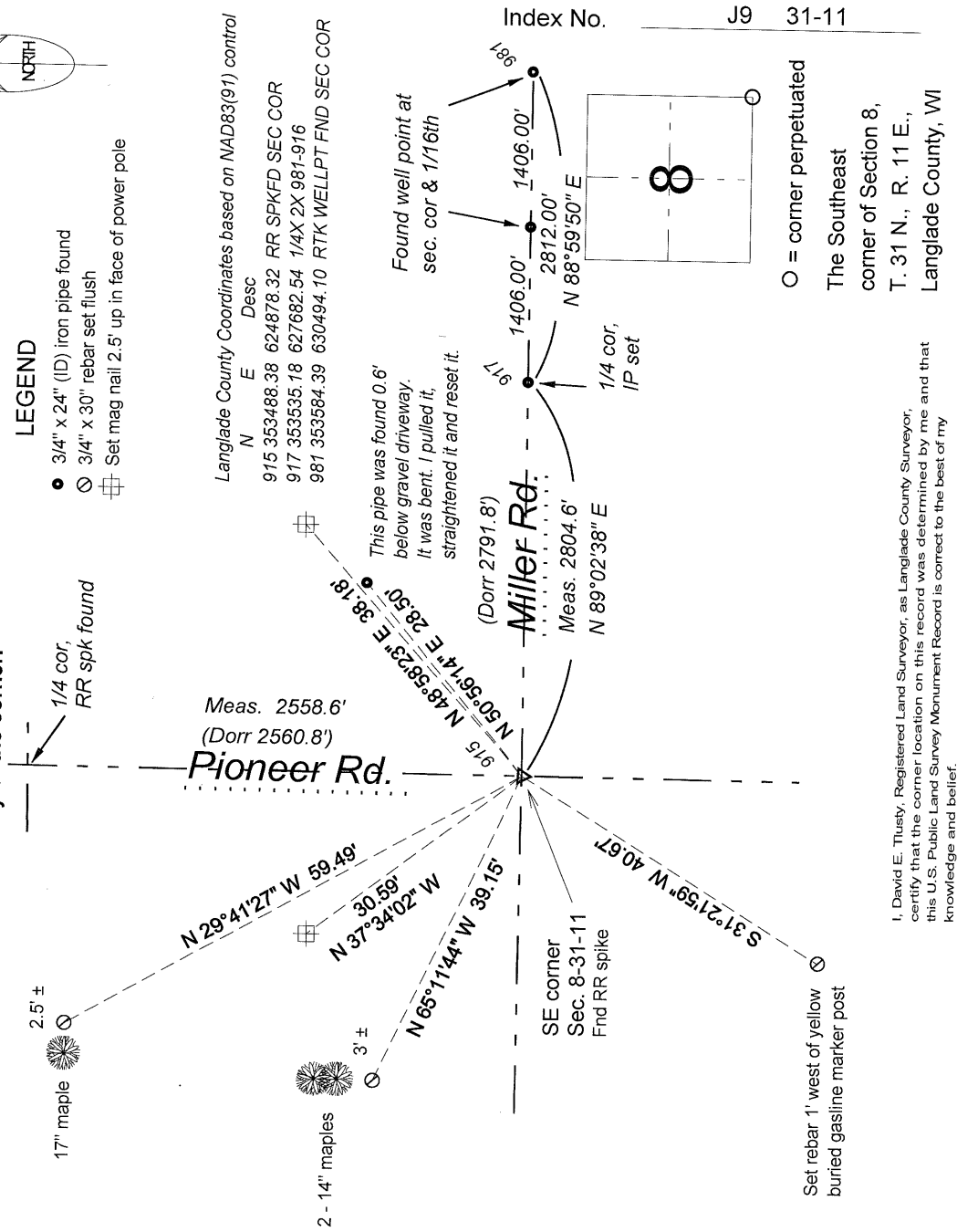
Describe record evidence, recovered physical evidence, occupational evidence, testimonial evidence and all other evidence considered in the recovery/restoration of the corner.

The original corner was established in 1860 by Hiram C. Fellows. Original bearing trees: sugar, 10", N42E; 10 links and a fir, 12", N36W, 10 links. In 1879, Deliglese (Fb144-45) used this corner. In 1884, Dorr (Fb140-21) measured from the S1/4 of Sec 8 to this corner; 42.18 chs. In 1898, Dorr (Fb97-49) measured north from the corner, 38.80 chs. and east from this corner, 42.30 chs. No other records until former surveyor Kelly in 1989 "Located iron rod. Set RR spike over rod in road. Set 3" alum. wit. mon." 7/7/2011 D. Thusty pulled RR spike, found nothing under it. As its been accepted for years and works good with recovered points to the east and Dorr's distance to the north, I accept it as the best evidence of the corner and replace the RR spike with the monument described below.

Physical description of the monument set:

I replaced the RR spike with a Berntsen Deep-1 magnet, down 48" and then set a 2" x 36" iron pipe with alum cap., top of which is 8" below road surface. Note: road is to be ground and repaved in a few days.

Describe the accessories used to perpetuate the corner. Include a plan view drawing and accessories found/set. Describe measuring point on bearing trees. Show any topographic features that would aid in future recovery of the corner.



I, David E. Thusty, Registered Land Surveyor, as Langlade County Surveyor, certify that the corner location on this record was determined by me and that this U.S. Public Land Survey Monument Record is correct to the best of my knowledge and belief.

Field book: FB9-94