

4311107 2000

# U.S. PUBLIC LAND SURVEY MONUMENT RECORD

(Prepared and as required by S. A-E 7.08 WI Administrative Code)

The EAST 1/4 corner of Section 7, T. 31 N., R. 11 E., Langlade County, WI  
 Corner was (check all that apply)

- Restored through acceptance of an obliterated evidence location.
- Restored through acceptance of a found perpetuated location.
- Determined to be lost and re-established through proportionate methods. (show bearings and distances to PLS corners used for proportioning.)
- Restored/recovered/re-established in a location that differs from a previously established position. (Show difference in plan view below.)
- Check here if additional information is shown on the reverse side of this form.

**Describe record evidence, recovered physical evidence, occupational evidence, testimonial evidence, and all other evidence considered in the recovery/restoration of the corner.**

1860 - Original corner established by H.C. Fellows - bearing trees: Elm, 12", S83°W, 4 links and a Sugar, 10", East, 12 links.

1985 - Abendroth found a 2" iron pipe at corner location.

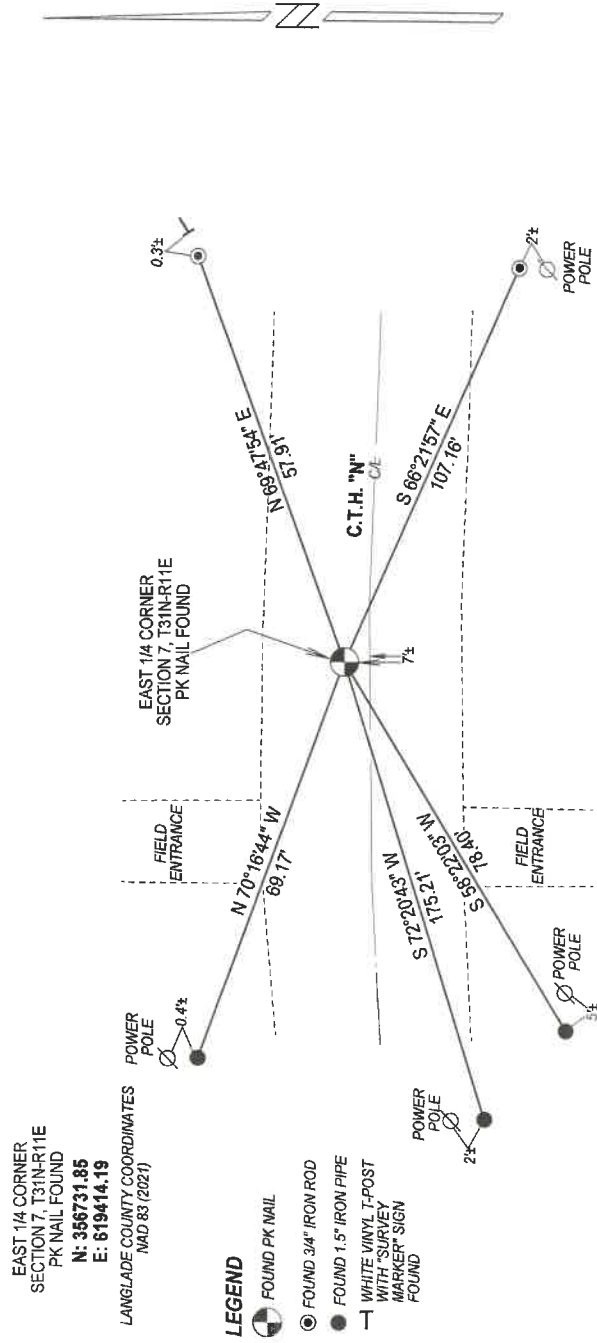
2004 - Charley Brinkmeier set a pk nail over 2" iron pipe below road surface. Location "matched with some of the ties from Abendroth's tie sheet."

2022 - I found the pk nail set by Brinkmeier along with existing ties. Future road construction is planned. I verified corner location with existing ties.

**Physical description of the monument set:**

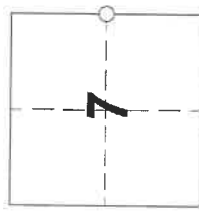
I accept the existing pk nail as the corner location and tied it out as shown below.

Describe the accessories used to perpetuate the location of the corner. Include a plan view drawing and indicate accessories found/set. Describe measuring point on bearing trees. Show any topographic features that would aid in future recovery of the corner.



NOTES  
 - SKETCH NOT DRAWN TO SCALE  
 - TIE BEARINGS SHOWN ARE LANGLADE COUNTY GRID BEARINGS.  
 - ALL TIES MEASURED ELECTRONICALLY WITH TOTAL STATION.

The EAST 1/4  
 Corner of Section 7  
 T. 31 N., R. 11 E.  
 Langlade County, WI



○ = Location of corner



I, Michael J. Hoffman certify that the corner location shown on this record was determined by me or under my direction and control and that this U.S. Public Land Survey Monument Record is correct and complete to the best of my knowledge and belief.

Michael J. Hoffman Signature  
12/12/2022 Date

43111072000

# U.S. PUBLIC LAND SURVEY MONUMENT RECORD

### HISTORY OF ORIGINAL CORNER ESTABLISHMENT AND SUBSEQUENT RESTORATION AND DESCRIPTION OF ANY RECORD, MONUMENT OCCUPATIONAL, TESTIMONIAL OR OTHER EVIDENCE CONSIDERED:

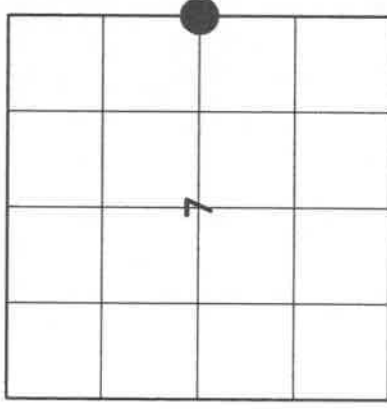
THE ORIGINAL CORNER WAS SET BY FELLOWS IN 1860. THE ORIGINAL BEARING TREES WERE:

- 12" ELM S83°W, 21 LINKS
- 10" MAPLE EAST, 12 LINKS

A 2" PIPE WAS FOUND BY ABENDROTH IN 1985.

CTH N HAD NEW PAVEMENT AND WE DID NOT DIG FOR THE 2" PIPE BUT WE DID HAVE A GOOD LOCATION WITH THE METAL DETECTOR THAT MATCHED WITH SOME OF THE TIES FROM ABENDROTH'S TIE SHEET. WE SET 2 NEW TIES AND A PK NAIL FOR THE CORNER.

● = LOCATION OF CORNER



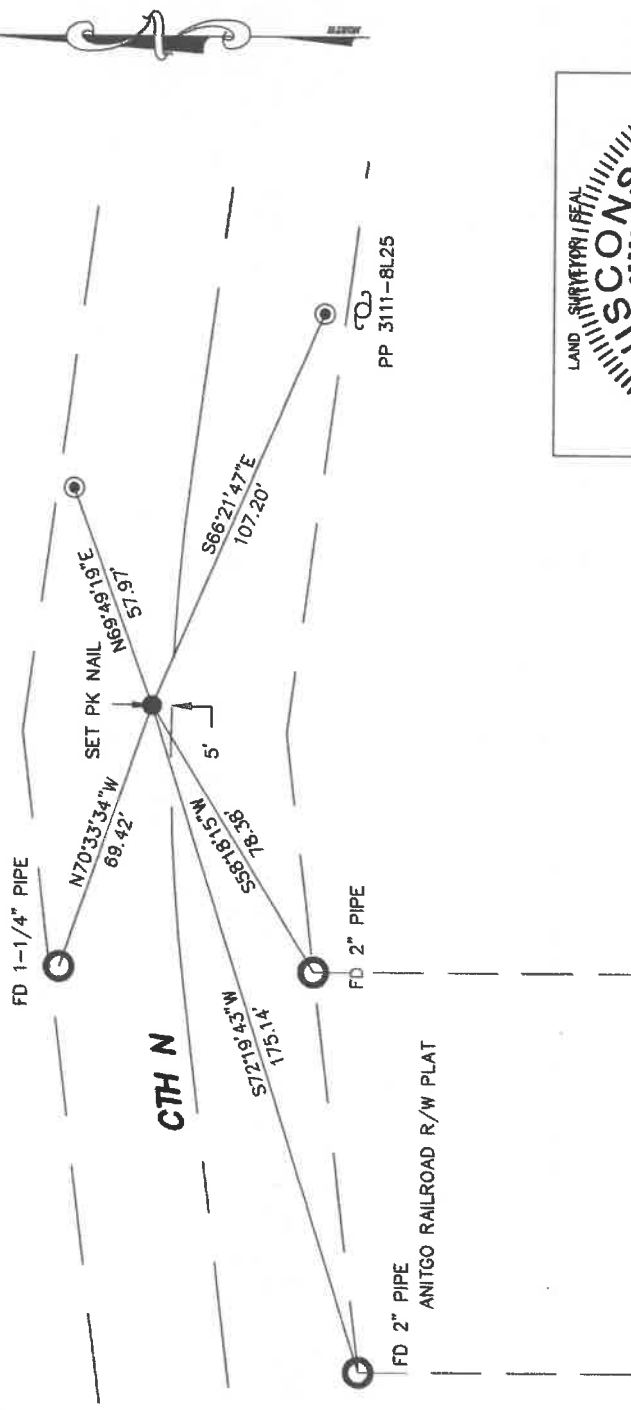
SECTION 7  
 TOWNSHIP 31 NORTH, RANGE 11 EAST  
 TOWN OF ANTIGO  
 LANGLADE COUNTY, WISCONSIN

### CORNER WAS: (CHECK ALL THAT APPLY)

- RESTORED THROUGH ACCEPTANCE OF AN OBLITERATED EVIDENCE LOCATION
- RESTORED THROUGH ACCEPTANCE OF A FOUND PERPETUATED LOCATION
- CONSIDERED A LOST CORNER AND REESTABLISHED THROUGH LOST CORNER PROPORTIONATE METHODS (INCLUDE A PLAN VIEW DRAWING SHOWING DISTANCES AND DIRECTIONS TO OTHER PUBLIC LAND SURVEY CORNERS USED FOR PROPORTIONING AND DETERMINING THE CORNER LOCATION)
- RESTORED OR REESTABLISHED IN A LOCATION THAT DIFFERS FROM A PREVIOUS RESTORATION OR REESTABLISHMENT (INCLUDE A PLAN VIEW DRAWING AND INDICATE WHAT WAS SET AND/OR FOUND)
- CHECK IF THERE IS ADDITIONAL INFORMATION ON BACK

DESCRIBE THE MONUMENT AND ACCESSORIES USED TO PERPETUATE THE LOCATION OF THE CORNER. (INCLUDE A PLAN VIEW DRAWING AND INDICATE WHAT WAS SET AND/OR FOUND) ALSO INCLUDE FOUR TIES TO THE SECTION CORNER AND DESCRIPTION OF THE TIES.

SET 3/4" RE-BARS AT ALL TIE LOCATIONS



CHARLEY G. BRINKMEIER

(Type or print name) CERTIFY THAT THE CORNER LOCATION SHOWN ON THIS RECORD WAS DETERMINED BY ME OR UNDER MY DIRECTION AND CONTROL AND THAT THIS U.S. PUBLIC LAND SURVEY MONUMENT RECORD IS CORRECT AND COMPLETE TO THE BEST OF MY KNOWLEDGE AND BELIEF.

*Charley Brinkmeier*  
SIGNATURE

4-25-04  
DATE



G5 31-11

INDEX NO.

4311072900

# U. S. PUBLIC LAND SURVEY MONUMENT RECORD

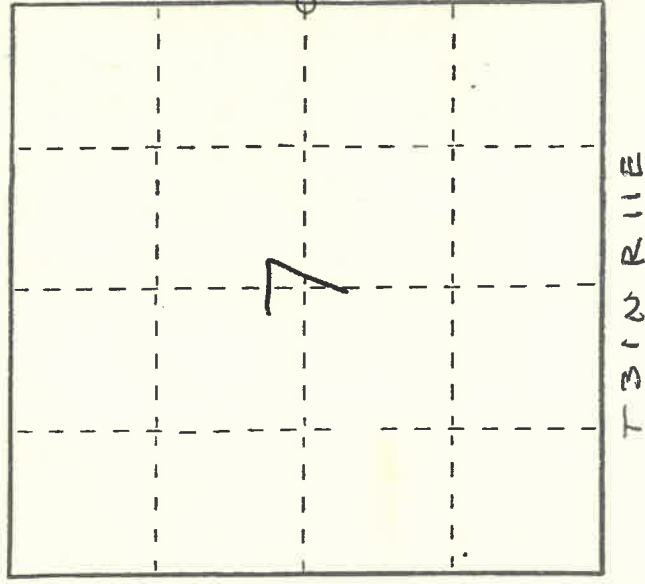
## INSTRUCTIONS:

This record shall show the location of the corner and shall include all of the following nine elements (a through i).

(a) Identify the corner by reference to the U.S. public land survey system.

○ = Corner monument restored.

East  $\frac{1}{4}$  corner of Section 7  
T31N, R11E, Town of Antigo



(b) Describe any record evidence, monument evidence, occupational evidence, testimonial evidence or any other material evidence you considered, and whether the monument was found or placed.

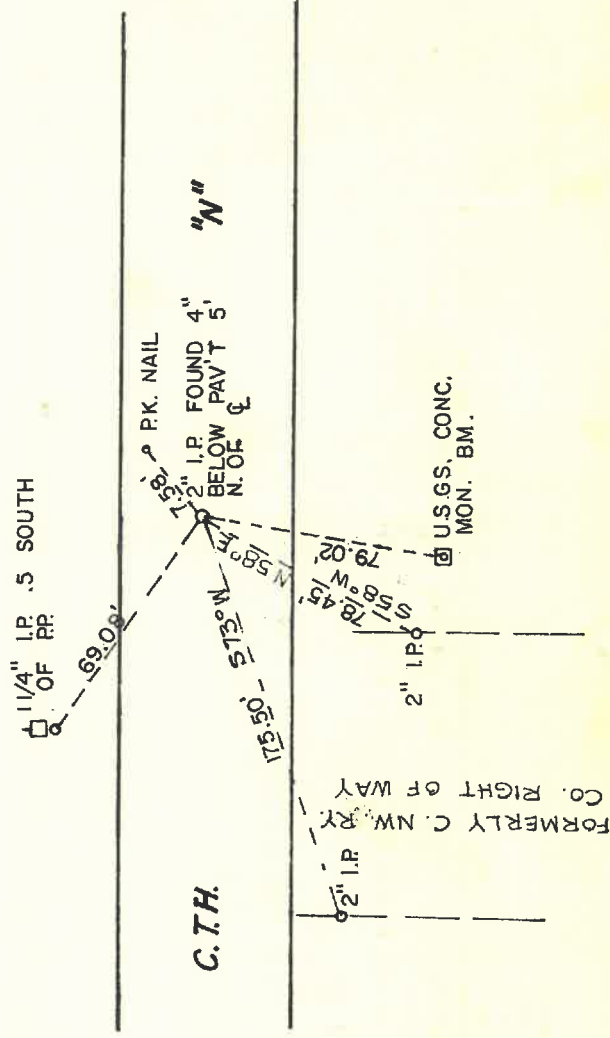
Found 2" iron pipe below pavement.

Corner fit distance from centerline of railroad right of way according to railroad plat.

(c) In the plan view drawing below, provide reference ties to at least 4 witness monuments, or, if the location is within a municipality, to at least 2 witness monuments. (Witness monuments shall be made of concrete, natural stone, iron or other equally durable material.) Describe witness monuments.

(d) Show a plan view drawing depicting the relevant monuments and reference ties which is sufficient in detail to enable accurate relocation of the corner monument if the corner monument is disturbed. Indicate north.

ALL BEARINGS ARE REFERENCED TO MAGNETIC NORTH.



(e) Describe any material discrepancy between the location of the corner as restored or reestablished and the location of that corner as previously restored or reestablished by distance and direction. Show the discrepancy on the plan view drawing under (d), above. Show the distances between the corner as previously restored or reestablished and (1) the corner as restored or reestablished, and (2) to at least 2 of the witness monuments shown on the drawing in (d), above.

43111072000

No known material discrepancy

(f) Was the corner restored through acceptance of (1) an obliterated evidence location, or, (2) a found perpetuated location?

Found perpetuated location

(g&h) Was the corner reestablished through lost corner proportionate methods? If so, show the method, including the directions and distances to other public land survey corners used as evidence or used for proportioning in determining the corner location?

No

(i) I, Edwin R. Abendroth  
(Type or print name) certify that the corner location shown on this record was determined by me or under my direction and control and that this U.S. Public Land Survey Monument Record is correct and complete to the best of my knowledge and belief.

Edwin R. Abendroth July 16, 1985  
Signature Date

