

43111070020

U.S. PUBLIC LAND SURVEY MONUMENT RECORD

HISTORY OF ORIGINAL CORNER ESTABLISHMENT AND SUBSEQUENT RESTORATION AND DESCRIPTION OF ANY RECORD, MONUMENT OCCUPATIONAL, TESTIMONIAL OR OTHER EVIDENCE CONSIDERED:

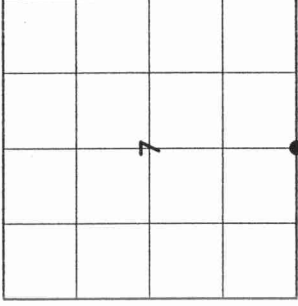
THE ORIGINAL CORNER WAS SET BY FELLOWS IN 1860. THE ORIGINAL BEARING TREES WERE:

6" FIR N71°W, 9 LINKS

10" FIR S64°E, 5 LINKS

WE SET THIS CORNER FROM LOCATING THE FENCE ON THE SOUTH LINE OF THE SW - SW SEC 7 AND EXTENDING THE BEARING FROM THE SW CORNER TO INTERSECT THE FENCE AT THE SOUTH 1/4. SET 2" X 30" PIPE WITH BRASS CAP AT THE INTERSECTION.

● = LOCATION OF CORNER



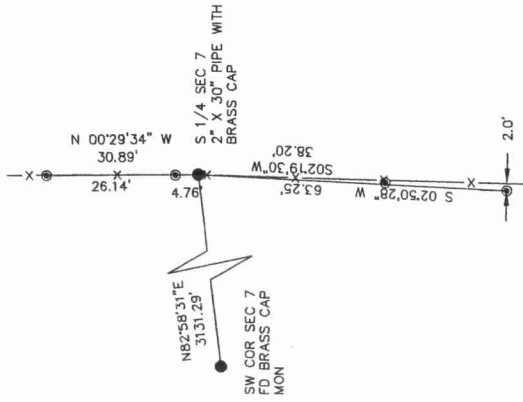
SECTION 7
 TOWNSHIP 31 NORTH, RANGE 11 EAST
 TOWN OF ANTIGO
 LANGLADE COUNTY, WISCONSIN

CORNER WAS: (CHECK ALL THAT APPLY)

- RESTORED THROUGH ACCEPTANCE OF AN OBLITERATED EVIDENCE LOCATION
- RESTORED THROUGH ACCEPTANCE OF A FOUND PERPETUATED LOCATION
- CONSIDERED A LOST CORNER AND REESTABLISHED THROUGH LOST CORNER PROPORTIONATE METHODS (INCLUDE A PLAN VIEW DRAWING SHOWING DISTANCES AND DIRECTIONS TO OTHER PUBLIC LAND SURVEY CORNERS USED FOR PROPORTIONING AND DETERMINING THE CORNER LOCATION)
- RESTORED OR REESTABLISHED IN A LOCATION THAT DIFFERS FROM A PREVIOUS RESTORATION OR REESTABLISHMENT (INCLUDE A PLAN VIEW DRAWING AND INDICATE WHAT WAS SET AND/OR FOUND)
- CHECK IF THERE IS ADDITIONAL INFORMATION ON BACK

DESCRIBE THE MONUMENT AND ACCESSORIES USED TO PERPETUATE THE LOCATION OF THE CORNER. (INCLUDE A PLAN VIEW DRAWING AND INDICATE WHAT WAS SET AND/OR FOUND) ALSO INCLUDE FOUR TIES TO THE SECTION CORNER AND DESCRIPTION OF THE TIES.

SET 3/4" RE-BARS AT ALL TIE LOCATIONS

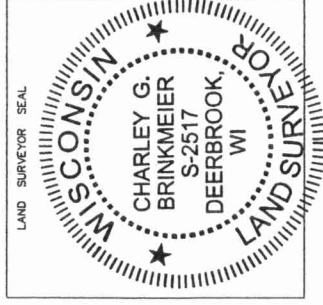


CHARLEY G. BRINKMEIER

(VIEW OF RIGHT PLAIN SURVEY) THAT THE CORNER LOCATION SHOWN ON THIS RECORD WAS DETERMINED BY ME OR UNDER MY DIRECTION AND CONTROL AND THAT THIS U.S. PUBLIC LAND SURVEY MONUMENT RECORD IS CORRECT AND COMPLETE TO THE BEST OF MY KNOWLEDGE AND BELIEF.

Charley G. Brinkmeier
 SIGNATURE

4-28-04
 DATE



J3 31-11
 INDEX NO.