

U.S. PUBLIC LAND SURVEY MONUMENT RECORD

(Prepared and as required by S. A-E 7.08 WI Administrative Code)

The EAST QUARTER corner of Section 6, T. 31 N., R. 11 E., Langlade County, WI
 Corner was: (check all that apply)
 Restored through acceptance of an obliterated evidence location.
 Restored through acceptance of a found perpetuated location.
 Determined to be lost and re-established through proportionate methods.
 (Show bearings and distances to PLSS corners used for proportioning.) 43111062000
 Restored/recovered/reestablished in a location that differs from a previously established position. (Show difference in plan view below.)

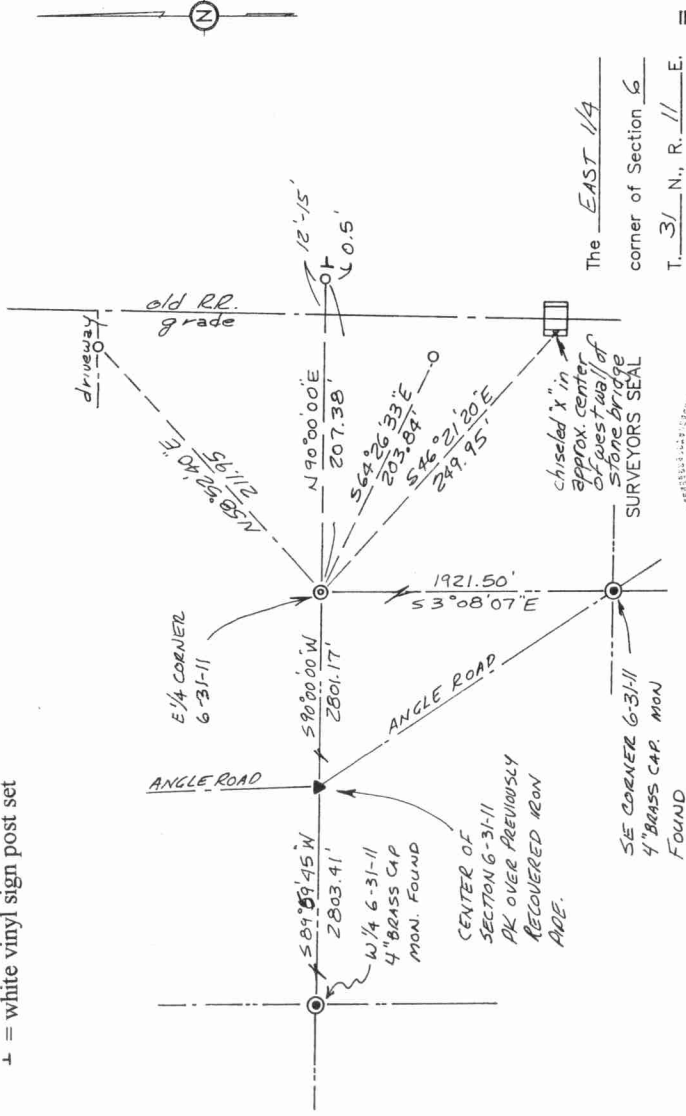
Check here if additional information is shown on the reverse side of this form.
 Describe record evidence, recovered physical evidence, occupational evidence, testimonial evidence and all other evidence considered in the recovery/restoration of the corner.
 The original corner was established in 1859 by Hiram C. Fellows. Original bearing trees were: lind, 12", S60°W, 10 links (6.6 ft.), and an ironwood, 8", S35°E, 11 links (7.2 ft.). In 1894, Joseph Duchac did a road survey of the North Half of Section 6. The survey was made for the Town of Antigo. He described the corner as a single bit axe and piece of plow steel with ? holes (he made a sketch of the plow steel on his map). In the County Surveyor records (FB1130) a surveyor unknown surveyed the East half of Section 6 and mentioned some of the Duchac information, in particular, the pine stump BT's that Duchac noted, but with slightly different dimensions. 4/13/99 Dave Tlusty, Dean Williams, from the previously recovered W1/4 corner and Center of Section 6, we extended the quarter line and found the Duchac single bit and piece of plow steel (upright and in good condition), down 1.4' in field. The plow steel found was exactly as Duchac had sketched it. Accepted plow steel as the best evidence of the original corner location. We removed the plow steel and axe, took pictures of them, replaced them with a new 2" x 30" iron pipe with 3 1/4" brass cap, top of which is 1.5' below ground and reset the found items alongside the new monument set.

Physical description of the monument set:
 Replaced the found plow steel and single bit axe with a new 2" x 30" iron pipe with 3 1/4" brass cap, top of which is 1.5' below ground.

Describe the accessories used to perpetuate the location of the corner. Include a plan view drawing and indicate accessories found/set. Describe measuring point on bearing trees. Show any topographic features that would aid in future recovery of the corner.

o = 1" x 30" iron pipe set flush
 + = white vinyl sign post set

FB3-87



The EAST 1/4 corner of Section 6
 T. 31 N., R. 11 E.
 Langlade County, WI

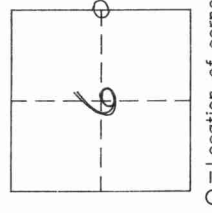


DAVID E. TLUSTY, LANGLADE COUNTY SURVEYOR, certify that the corner location shown on this record was determined by me or under my direction and control and that this U.S. Public Land Survey Monument Record is correct and complete to the best of my knowledge and belief.

David E. Tlusty
 Signature

5/13/99
 Date

INDEX No. 05



O = Location of corner