



4311050020

Describe any material discrepancy between the location of the corner as restored or reestablished and the location of that corner as previously restored or reestablished by distance and direction. Show the discrepancy on the plan view drawing under (d), above. Show the distances between the corner as previously restored or reestablished and (1) the corner as restored or reestablished, and (2) to at least 2 of the witness monuments shown on the drawing in (d), above.

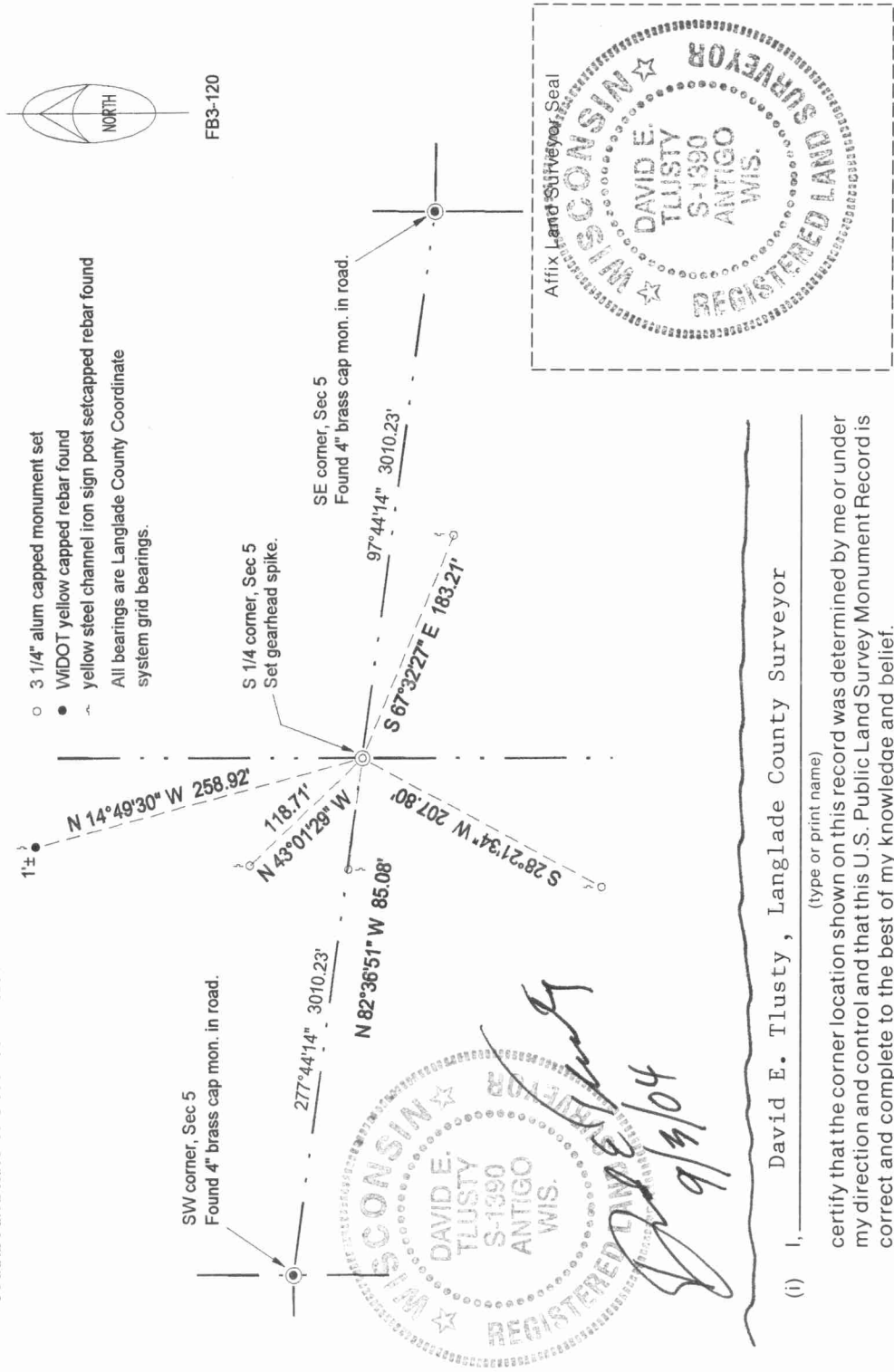
No discrepancy.

- (f) Was the corner restored through acceptance of (1) an obliterated evidence location, or, (2) a found perpetuated location.? Corner was restored as described on the front side of this form.

- (g & h) Was the corner reestablished through lost corner proportionate methods? If so, show the method, including the directions and distances to other public land survey corners used as evidence or used for proportioning in determining the corner location.

See distances on front side of this form.

09/31/04 D. Tlusty. To set a new monument for the corner, I RTK GPS'ed the SW corner and the SE corner of Section 5. From those observations, I compute a grid bearing and distance on the line of 97°44'14", 6020.47'. The distance checks well with the 6020.46' distance I measured in 1992. I re-set a gear-head spike for this corner by single proportionate distance between the corners. The corner falls in the approximate center of the westmost southbound lane of USH "45". I also GPS'ed the ties shown below.



(i) I, David E. Tlusty, Langlade County Surveyor

(type or print name)

certify that the corner location shown on this record was determined by me or under my direction and control and that this U.S. Public Land Survey Monument Record is correct and complete to the best of my knowledge and belief.

David E. Tlusty 10/5/92

Signature

Date