

4311050000

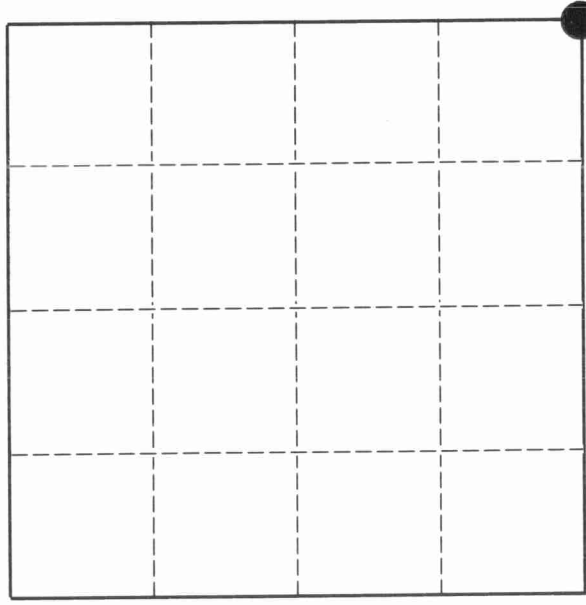
U. S. PUBLIC LAND SURVEY MONUMENT RECORD

INSTRUCTIONS:

This record shall show the location of the corner and shall include all of the following nine elements (a through i).

- (a) Identify the corner by reference to the U.S. public land survey system.
- O = Corner monument restored.

Southeast corner,
 Section 5,
 Township 31 North,
 Range 11 East,
 Langlade County, WI



Section 5, T31N, R11E

- (b) Describe any record evidence, monument evidence, occupational evidence, testimonial evidence or any other material evidence you considered, and whether the monument was found or placed.

The original corner was established in September 1860, by Hiram C. Fellows. Malcolm Hutchinson, in 1918, described this corner as "old stake in road, set sleigh shoe for cor." I find no evidence of the sleigh shoe. I established this corner on an extension of a line from the East Quarter corner of Section 5 to the South Sixteenth corner to Sections 4 & 5, and at double the distance between said corners. The corner falls on the east edge of a gravel road at a small bend, and in line with the center of said road to the south, and in line with the east wheel rut of said road to the north. The corner is in line with an apparent property line to the east (old fence remnants and small brush). While digging in the corner monument, I found pieces of broken glass very similiar to the broken glass set by Hutchinson at the Southwest corner of Section 5 and just recently recovered.

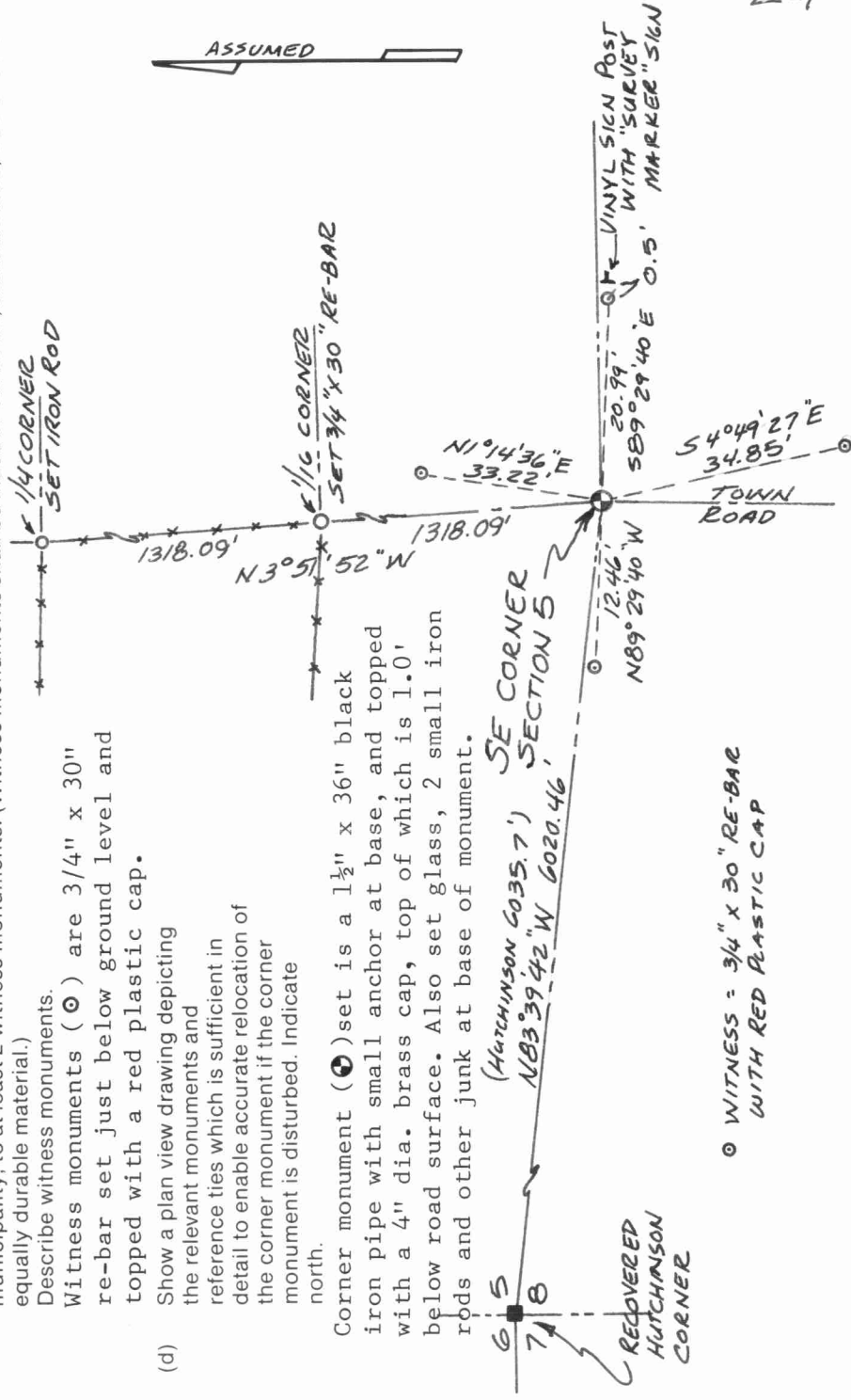
- (c) In the plan view drawing below, provide reference ties to at least 4 witness monuments, or, if the location is within a municipality, to at least 2 witness monuments. (Witness monuments shall be made of concrete, natural stone, iron or other equally durable material.) Describe witness monuments.

Witness monuments (⊙) are 3/4" x 30" re-bar set just below ground level and topped with a red plastic cap.

- (d) Show a plan view drawing depicting the relevant monuments and reference ties which is sufficient in detail to enable accurate relocation of the corner monument if the corner monument is disturbed. Indicate north.

Corner monument (⊙) set is a 1 1/2" x 36" black iron pipe with small anchor at base, and topped with a 4" dia. brass cap, top of which is 1.0' below road surface. Also set glass, 2 small iron rods and other junk at base of monument.

(Hutchinson 6035.7') SE CORNER SECTION 5
 NB339°42'W 6020.46'



⊙ WITNESS = 3/4" x 30" RE-BAR WITH RED PLASTIC CAP

