

LANGLADE COUNTY U.S. PUBLIC LAND CORNER RESTORATION

The South Quarter corner of Section 3, T. 31 N., R. 11 E., Langlade County, WI.

Corner was: (check all that apply)

4/3111030020

- Restored through acceptance of an obliterated evidence location.
- Restored through acceptance of a found perpetuated location.
- Determined to be lost and re-established through proportionate methods.
- Show bearings and distances to PLSS corners used for proportioning, and show original distances).
- Restored/recovered/re-established in a location that differs from a previously established position.
- (Show difference in plan view below).
- Check here if additional information is shown on the reverse side of this form.

Describe record evidence, recovered physical evidence, occupational evidence, testimonial evidence and all other evidence considered in the recovery/restoration of the corner.

The original corner was established in 1860 by Hiram Fellows. Original bearing trees: w. pine, 8", N03°W, 17 links and a w. pine, 8", S42°W, 10 links. Hutchinson, in 1914 and 1915, surveyed in Section 10 and described this corner as "1/4 post, stake by Dorr". I re-established this corner on an old East-West fence line, and on an extension of a line from the N 1/4 corner of Section 3, southerly through existing occupation (N-S fence line) near the Center of Section 3. This position is in good agreement with Hutchinsons distance to the Section corner East.

Physical description of the monument set:

I set a new 2" x 30" galvanized, flared bottom iron pipe with 3 1/4" dia. brass cap flush. Fields all around, no local witness monuments set.

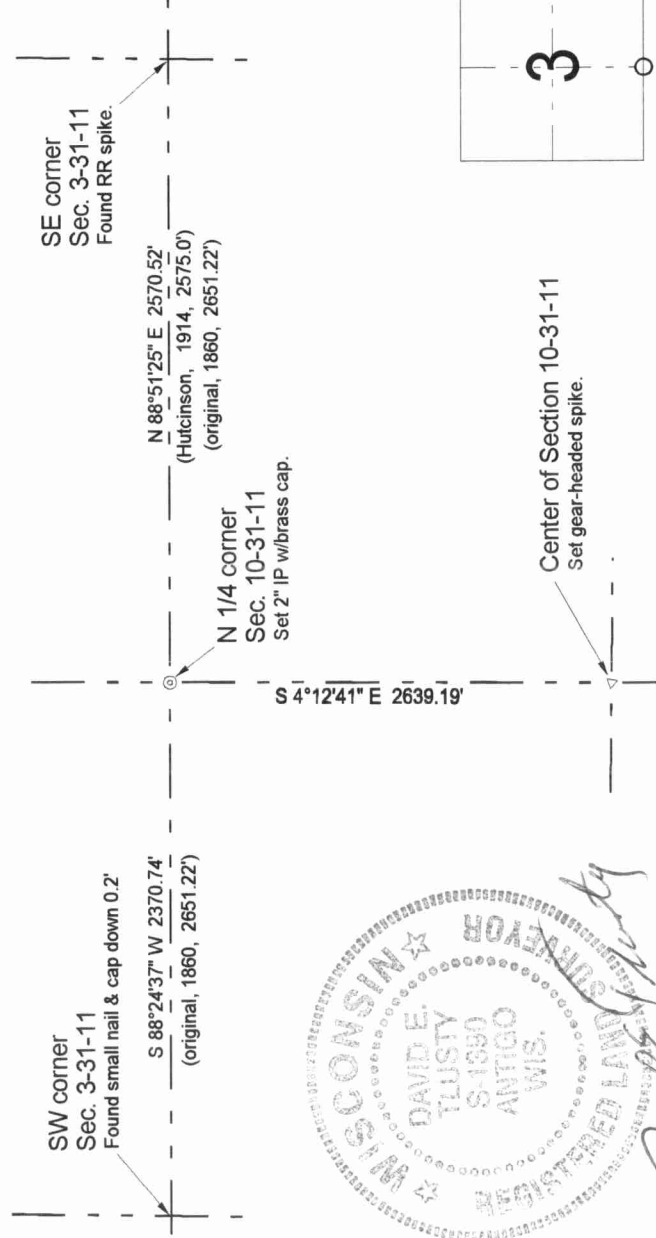
Set a white vinyl sign post 0.2' west of corner monument.

Describe the accessories used to perpetuate the corner. Include a plan view drawing and accessories found/set. Describe measuring point on bearing trees. Show any topographic features that would aid in future recovery of the corner.

Field book: FB9-61



LCCS grid bearings



O = corner perpetuated

The South Quarter corner of Section 3, T. 31 N., R. 11 E., Langlade County, WI

I, David E. Tlusty, Registered Land Surveyor, as Langlade County Surveyor, certify that the corner location on this record was determined by me and that this U.S. Public Land Survey Monument Record is correct to the best of my knowledge and belief.

