

4311102 2020

U.S. PUBLIC LAND SURVEY MONUMENT RECORD

(Prepared and as required by S. A-E 7.08 WI Administrative Code)

The CENTER 1/4 corner of Section 2 T. 31 N., R. 11 E., Langlade County, WI
Corner was (check all that apply)

- Restored through acceptance of an obliterated evidence location.
- Restored through acceptance of a found perpetuated location.
- Determined to be lost and re-established through proportionate methods. (show bearings and distances to PLSS corners used for proportioning.)
- Restored/recovered/re-established in a location that differs from a previously established position. (Show difference in plan view below.)
- Check here if additional information is shown on the reverse side of this form.

Describe record evidence, recovered physical evidence, occupational evidence, testimonial evidence, and all other evidence considered in the recovery/restoration of the corner.

This corner was not set as part of the original GLO survey.

1887 - (FB-140 PG-47) Surveyor Dorr notes at Center 1/4 corner "pine stump double NE stump", and "pine stump 20", N79°W, 15 links.

1908 - (FB-96 PG-126) Surveyor Dorr revisits corner and references the same as above.

1908 - (FB-94 PG-40) Surveyor Brooks references Dorr's corner "Set by Dorr. Double Pine Stump. NE 1/2 of stump. 20" N79°W, 17 links. Set iron bar for stake."

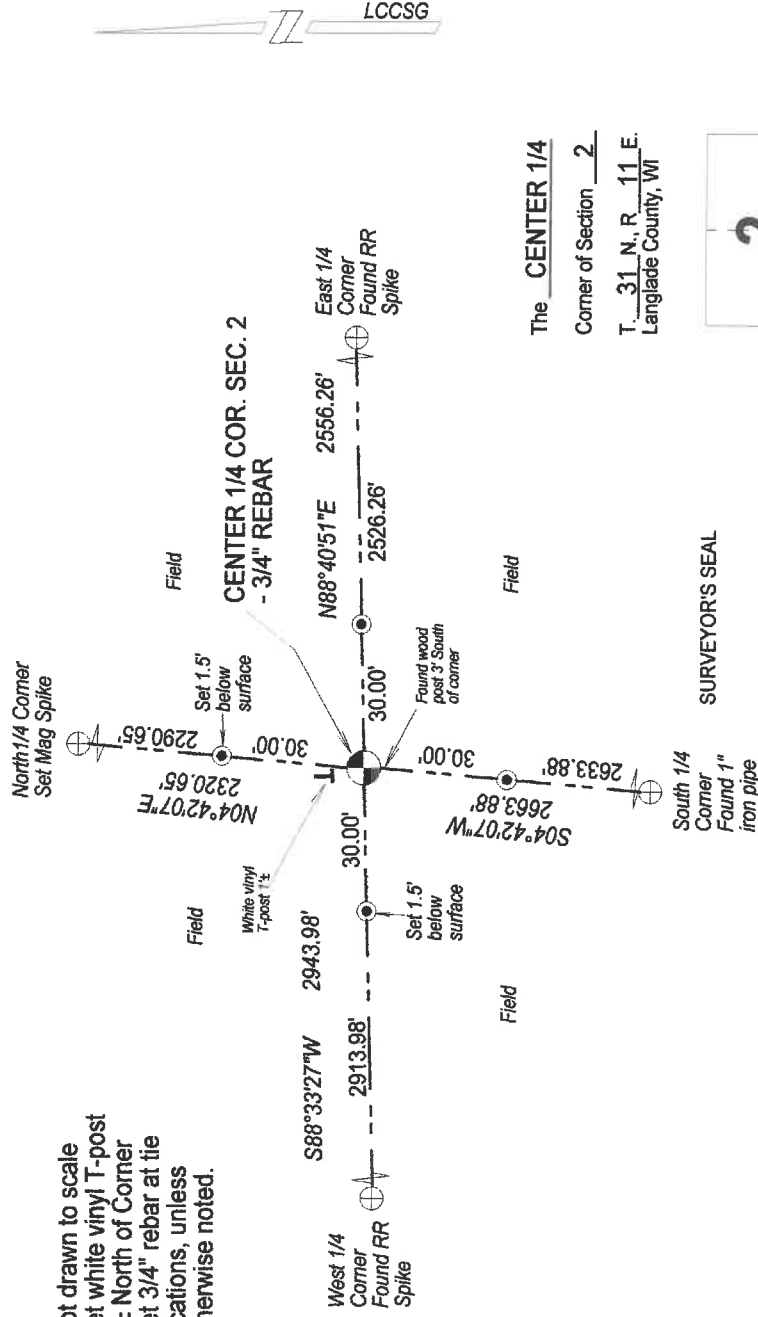
2015 - Working in the NE 1/4 of Section 2, I searched for the "iron bar" set by Brooks in 1908. I found an existing 3/4" rebar which matches with existing field line occupation to the East and South. I also found an existing wood post 2' south of the found 3/4" rebar. The position of the 3/4" rebar falls within 3' of the computed position of the corner. I accept the 3/4" rebar as the Center 1/4 corner location and tied it out as shown below.

Physical description of the monument set:

I set an aluminum casing around the found 3/4" rebar, placed a rock mound around it, and tied it out as follows.

Describe the accessories used to perpetuate the location of the corner. Include a plan view drawing and indicate accessories found/set. Describe measuring point on bearing trees. Show any topographic features that would aid in future recovery of the corner.

- Not drawn to scale
- Set white vinyl T-post 1'± North of Corner
- Set 3/4" rebar at tie locations, unless otherwise noted.



The CENTER 1/4

Corner of Section 2

T. 31 N., R. 11 E.
Langlade County, WI

SURVEYOR'S SEAL

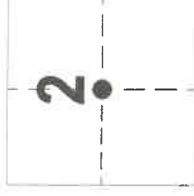


I, Timothy J. Rusch certify that the corner location shown on this record was determined by me or under my direction and control and that this U.S. Public Land Survey Monument Record is correct and complete to the best of my knowledge and belief.

Timothy J. Rusch 07-21-2020

Signature

Date



● = Location of corner