

CERTIFIED LAND CORNER RESTORATION

Index No. W-1

State of Wisconsin }
County of Langlade } ss.

I Wesley J. Tradewell, do hereby certify that on the 8th day of June, 1978, I found evidence of the North 1/16 corner of Sections 36 and 31 Township 31, North, Range 10 and 11 East, Fourth Principal Meridian, as described hereon; and that from this evidence I established a new monument and accessories as described hereon to perpetuate the original location of this corner.

Resident witnesses:

.....
.....
.....

History of original corner establishment:

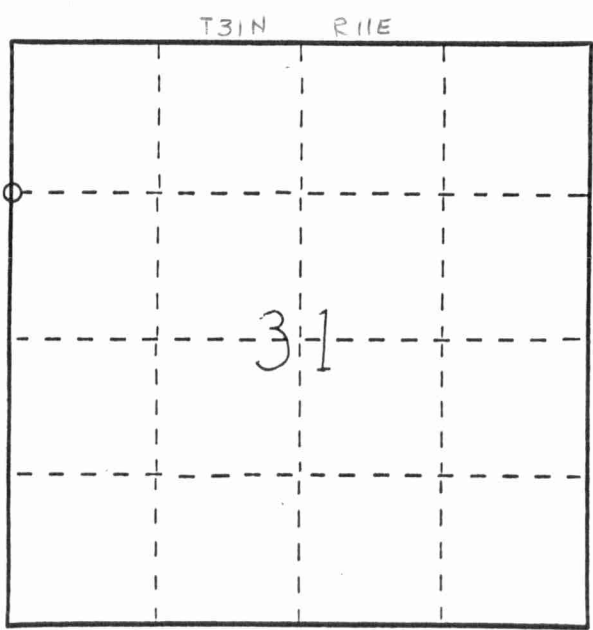
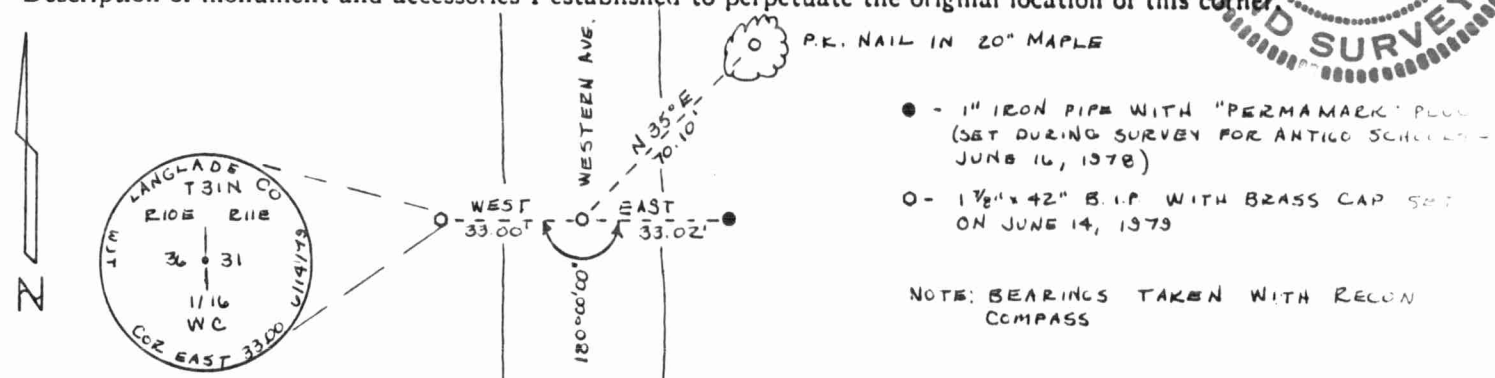
Corner called for in notes dated 6/21/1887 and 5/17/1897 (no description of corner monument given)

Description of corner evidence found:

Could find no evidence of corner monument- we set corner at midpoint of west line of northwest 1/4 of Section 31 (3/4"x24" iron rod set)



Description of monument and accessories I established to perpetuate the original location of this corner



○ = Corner monument restored.

Dated at Antigo, Wis., this 15th day of June, 1978

Signature Wesley J. Tradewell Title Registered Land Surveyor Registration No. 1342
(County Surveyor, Registered Land Surveyor, or other duly authorized official)

Office of Register of Deeds, County of....., I hereby certify that the within instrument was filed in this office for record on the..... day of....., 19... at..... o'clock..... M.

.....
(Register of Deeds)

By..... Deputy

FORM 985 M. C. MILLER CO., MILWAUKEE

43110363000

RECEIVED
1952