

CERTIFIED LAND CORNER RESTORATION

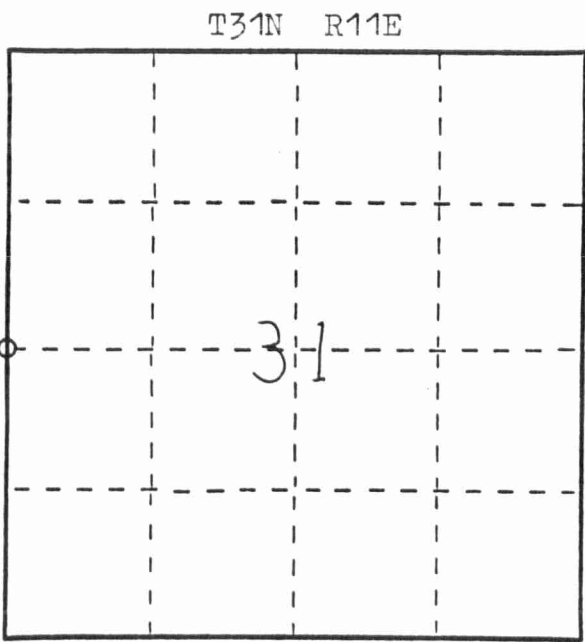
Index No. X-1

State of Wisconsin }
 County of Langlade } ss.

I Wesley J. Tradewell, do hereby certify that on the 25th day of May, 1978, I found evidence of the west 1/4 corner of Section 31 Township 31 North, Range 11 East, Fourth Principal Meridian, as described hereon; and that from this evidence I established a new monument and accessories as described hereon to perpetuate the original location of this corner.

Resident witnesses:

.....



○ = Corner monument restored.

History of original corner establishment:

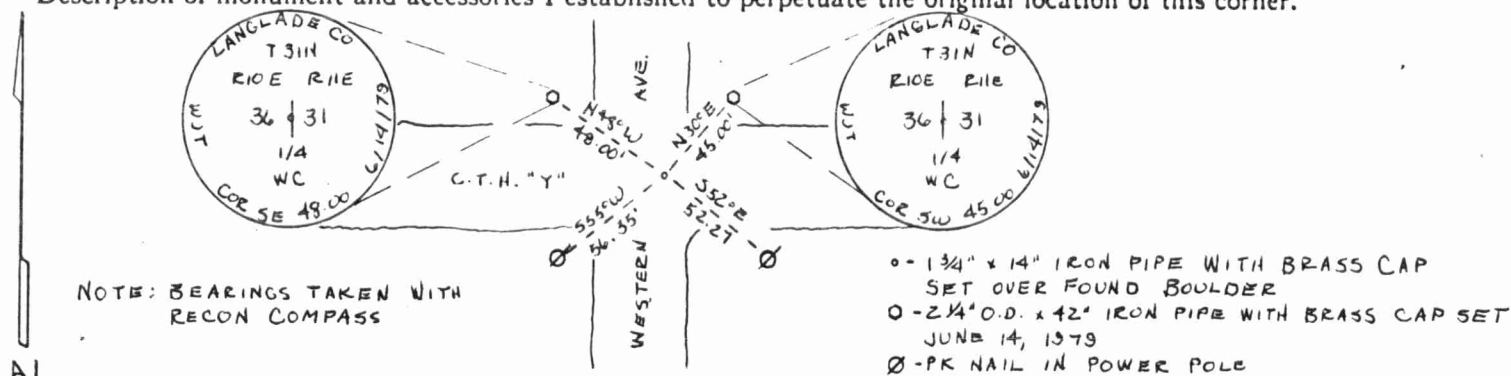
B.F. Dorr's notes - 6-21-1887
 West 1/4 post Dark gray boulder 6x8x16 with x on top, 4 bricks under and square hole under brick filled with charcoal

Description of corner evidence found:

Found Dorr's boulder



Description of monument and accessories I established to perpetuate the original location of this corner.



Dated at Antigo, Wis., this 15th day of June, 1979.

Signature Wesley J. Tradewell Title Registered Land Surveyor Registration No. 1342
 (County Surveyor, Registered Land Surveyor, or other duly authorized official)

Office of Register of Deeds, County of....., I hereby certify that the within instrument was filed in this office for record on the..... day of....., 19..... at..... o'clock..... M.

(Register of Deeds)

By..... Deputy

FORM 985 M. C. MILLER CO., MILWAUKEE 43/10362000

