

LANGLADE COUNTY U.S. PUBLIC LAND CORNER RESTORATION

The Southeast Corner of Section 36, T. 31 N., R. 10 E., Langlade County, WI.

4/3110360000

Corner was: (check all that apply)

- Restored through acceptance of an obliterated evidence location.
- Restored through acceptance of a found perpetuated location.
- Determined to be lost and re-established through proportionate methods.
- Show bearings and distances to PLSS corners used for proportioning, and show original distances).
- Restored/recovered/re-established in a location that differs from a previously established position.
- (Show difference in plan view below).
- Check here if addition information is shown on the reverse side of this form.

Describe record evidence, recovered physical evidence, occupational evidence, testimonial evidence and all other evidence considered in the recovery/restoration of the corner.

The original corner was established in 1851 by James M. Marsh. Original bearing trees: sugar, 8", N55°E, 50 links; an elm, 14", N25°E, 54 links; an elm, 11", N40°W, 44 links and an elm, 12", N65°W, 34 links. I can find no other information in the County Surveyor records regarding this corner. In 1994, Tom Arnott, didn't find anything here so he "measured south from the 1/4 corner 31-36 to the S1/16th corner 31-36 then doubled that distance to the sec. cor. and used the center of Western Ave. as the best possible location". He didn't describe what he found at either of those two corners. He set a railroad spike for the corner. 05/24/00 D. Tlusty, M. Kielcheski found Arnotts RR spike and measured to his ties. Dug in the road with a backhoe. Found nothing. Accepted the corner set by Arnott as the best evidence.
Found nothing. Accepted corner set by Arnott

Physical description of the monument set:

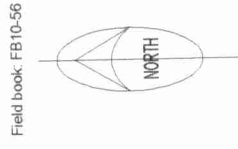
Road is to be re-surfaced in the near future. Re-set nothing for the corner.

Describe the accessories used to perpetuate the corner. Include a plan view drawing and accessories found/set. Describe measuring point on bearing trees. Show any topographic features that would aid in future recovery of the corner.

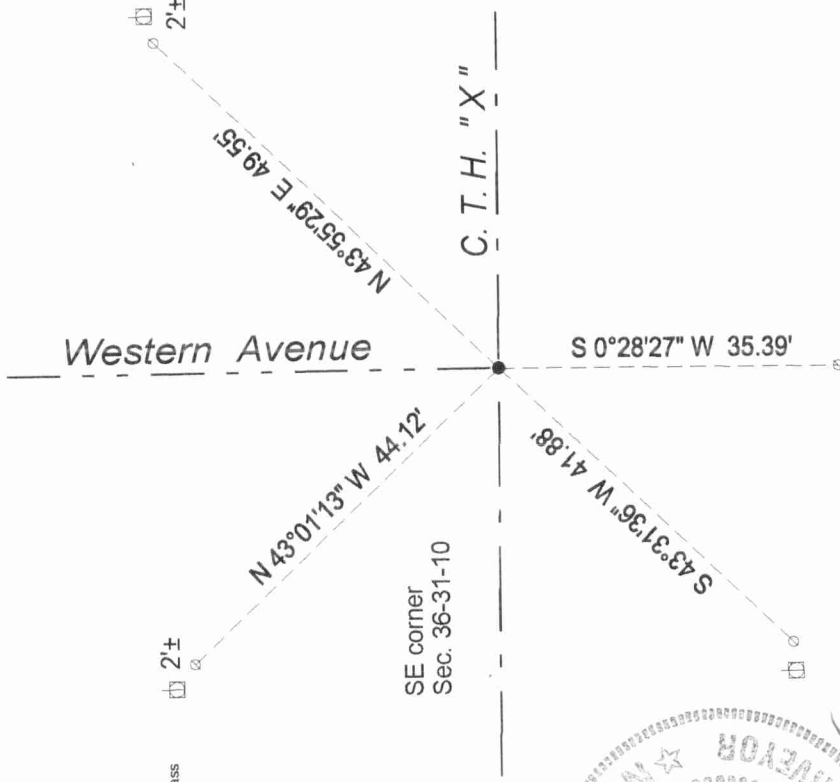
LEGEND

- 3/4" rebar found
- 3/4" x 30" rebar set
- ⊠ utility pole

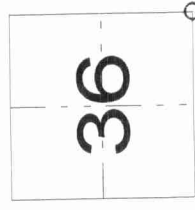
The bearings referenced to compass reading near corner.



Field book: FB10-56



Index No. Z25 31-10



○ = corner perpetuated

The Southeast corner of Section 36, T. 31 N., R. 10 E., Langlade County, WI



David E. Tlusty
3/21/02

I, David E. Tlusty, Registered Land Surveyor, as Langlade County Surveyor, certify that the corner location on this record was determined by me and that this U.S. Public Land Survey Monument Record is correct to the best of my knowledge and belief.

