

CERTIFIED LAND CORNER RESTORATION

Index No. X-16

State of Wisconsin }  
 County of LANGLADE } ss.

I WESLEY J. TRADEWELL, do hereby certify that on the 16<sup>TH</sup> day of JANUARY, 1979, I found evidence of the NW corner of NE 1/4 - SE 1/4, SECTION 34, Township 31, North, Range 10 EAST, Fourth Principal Meridian, as described hereon; and that from this evidence I established a new monument and accessories as described hereon to perpetuate the original location of this corner.

Resident witnesses:

.....  
 .....  
 .....

History of original corner establishment:

M. HUTCHINSON, (NO DATE), BOLT AT CORNER (BOOK A PAGE 77)  
 M. HUTCHINSON, DEC. 26, 1920, IRON BOLT AT CORNER  
 M. HUTCHINSON, JUNE 9, 1924, DRIVE POINT FOR CORNER

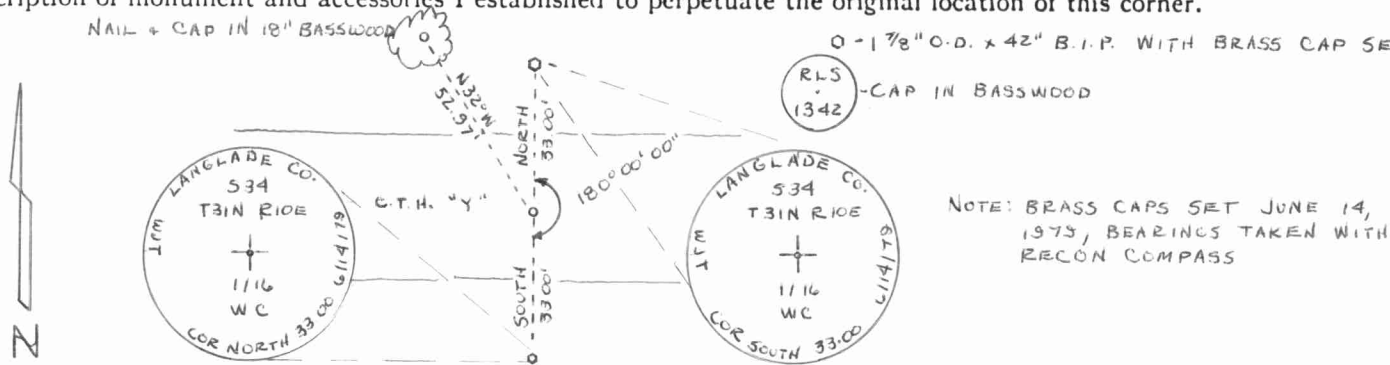


Description of corner evidence found:

2" O.D. IRON PIPE FOUND, 29" BELOW SURFACE - SET 1" O.D. x 28" IRON PIPE OVER FOUND 2" IRON PIPE

Description of monument and accessories I established to perpetuate the original location of this corner.

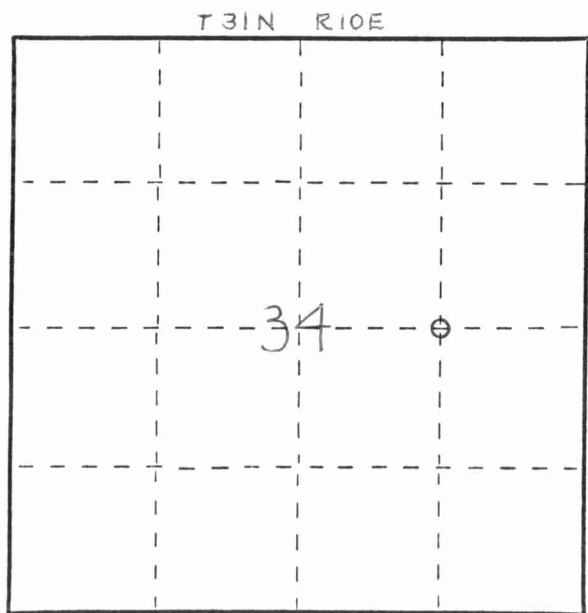
NAIL + CAP IN 18" BASSWOOD  
 0 - 1 7/8" O.D. x 42" B.I.P. WITH BRASS CAP SET  
 RLS 1342 - CAP IN BASSWOOD



NOTE: BRASS CAPS SET JUNE 14, 1975, BEARINGS TAKEN WITH RECON COMPASS

FORM 985 M. E. MILLER CO., MILWAUKEE

43110342010



○ = Corner monument restored.

Dated at ANTIGO, Wis., this 15<sup>TH</sup> day of JUNE, 1979

Signature Wesley J. Tradewell Title REGISTERED LAND SURVEYOR Registration No. 1342  
 (County Surveyor, Registered Land Surveyor, or other duly authorized official)

Office of Register of Deeds, County of....., I hereby certify that the within instrument was filed in this office for record on the..... day of....., 19..... at..... o'clock..... M.

.....  
 (Register of Deeds)

By..... Deputy

