

CERTIFIED LAND CORNER RESTORATION

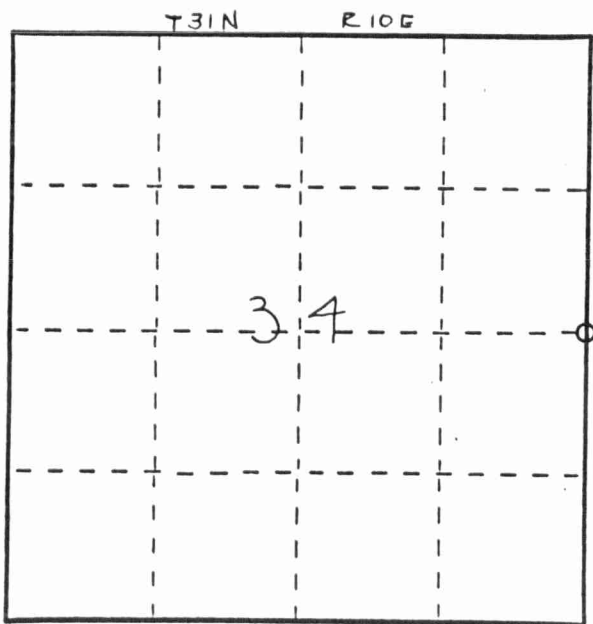
Index No. X-17

State of Wisconsin }  
County of LANGLADE } ss.

I WESLEY J. TRADEWELL, do hereby certify that on the 16<sup>TH</sup> day of JANUARY, 1979, I found evidence of the EAST 1/4 corner of SECTION 34 Township 31, North, Range 10 EAST, Fourth Principal Meridian, as described hereon; and that from this evidence I established a new monument and accessories as described hereon to perpetuate the original location of this corner.

Resident witnesses:

.....  
.....  
.....



○ = Corner monument restored.

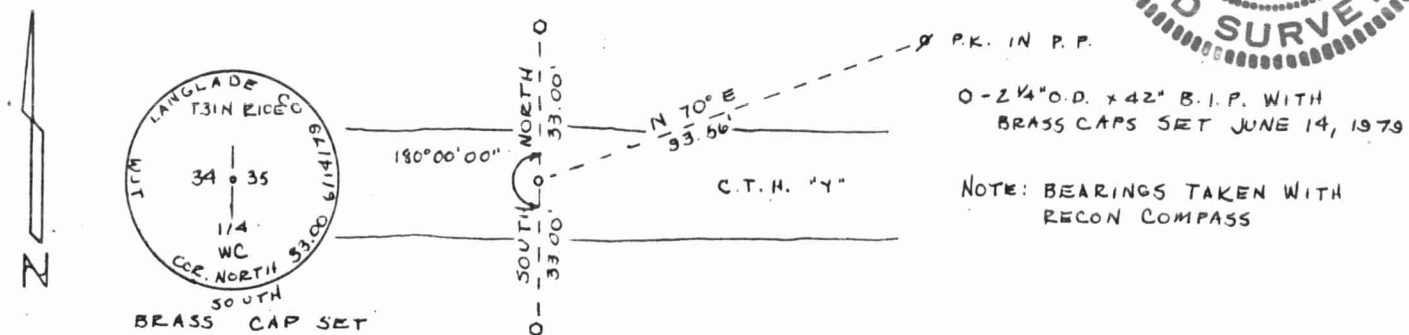
History of original corner establishment:

CORNER CALLED FOR IN M. HUTCHINSON NOTES DATED - DEC. 26, 1920; AUG. 20, 1922; AND JUNE 9, 1924; (NO DESCRIPTION OF CORNER MONUMENT GIVEN)

Description of corner evidence found:

1" IRON ROD FOUND 14" BELOW SURFACE - SET 7/8" x 12" IRON ROD OVER FOUND IRON ROD

Description of monument and accessories I established to perpetuate the original location of this corner.



Dated at ANTIGO, Wis., this 15<sup>TH</sup> day of JUNE, 1979

Signature: *Wesley J. Tradewell* Title: REGISTERED LAND SURVEYOR Registration No. 1342  
(County Surveyor, Registered Land Surveyor, or other duly authorized official)

Office of Register of Deeds, County of....., I hereby certify that the within instrument was filed in this office for record on the..... day of....., 19..... at..... o'clock..... M.

(Register of Deeds)

By..... Deputy

FORM 985 W. C. MILLER CO., MILWAUKEE

4316342000

