

**MARATHON COUNTY U.S. PUBLIC LAND  
SURVEY MONUMENT LOCATION RECORD**

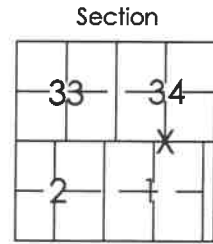
Corner Location: Souht Quarter Corner of Section 34  
 Monument Type: Found 2.5" Iron Pipe with 3.25" Brass Cap  
 County Coordinate: N 260,449.66 E 384,481.63  
 Date of Survey: 9/23/2019 Datum: WSCRS Marathon NAD 83 (2011)  
 Survey Party: John M. Jursa  
 Field Book: Looseleaf Hewitt Page Number: Y15

Found   
 Set   
 Re-set   
 Re-Tied

Section 34  
 Township 31N  
 Range 10E

Y15

Ackley  
~~City, Village, Town~~



Location  
(indicated by X)

**BASIS FOR MONUMENT LOCATION:**

(Describe method of survey and corner authentication)

11/16/2005 - Phillip Hargrove found a corner post on old fence line. It fit well with Hutchinson's distance from his 1921 survey. Accepted and set Langlade County Monument and tied out.

9/23/2019 - I found the 2.5" Iron Pipe with 3.25" Brass Cap as described by Hargrove. I found his ties and re-measured as shown below.

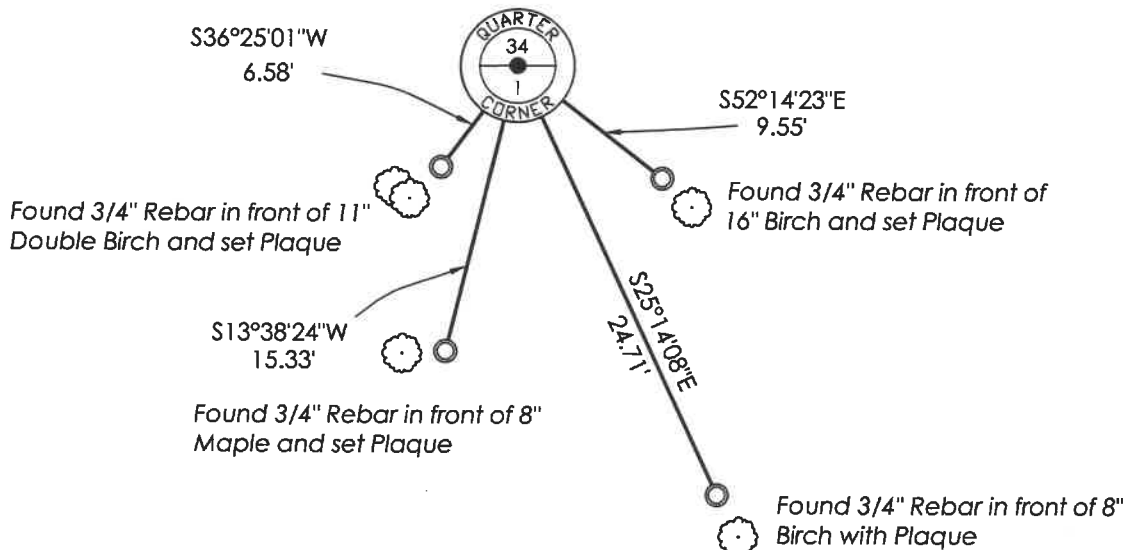


*[Handwritten Signature]*  
 John M. Jursa, RLS-3201  
 Date: 9/30/2019

**TIE SKETCH:** Show minimum of four (4) horizontal tie distances to fixed witness monuments found or set.

4311034 0020

Farm Field



Y15