

4311034 0000

U.S. PUBLIC LAND SURVEY MONUMENT RECORD

(Prepared and as required by S. A-E 7.08 WI Administrative Code)

The SOUTHEAST corner of Section 34, T. 31 N., R. 10 E., Langlade County, WI
Corner was (check all that apply)

- Restored through acceptance of an obliterated evidence location.
- Restored through acceptance of a found perpetuated location.
- Determined to be lost and re-established through proportionate methods. (show bearings and distances to PLSS corners used for proportioning.)
- Restored/recovered/re-established in a location that differs from a previously established position. (Show difference in plan view below.)
- Check here if additional information is shown on the reverse side of this form.

Describe record evidence, recovered physical evidence, occupational evidence, testimonial evidence, and all other evidence considered in the recovery/restoration of the corner.

1851 - Government Surveyor J.M. Marsh set original section post and referenced bearing trees, Birch 14", N 78° E, 56 links, Hemlock 8", N 40° E, 10 links, Sugar 12", N 40° W, 43 links and Sugar 12", N 70° W, 11 links.

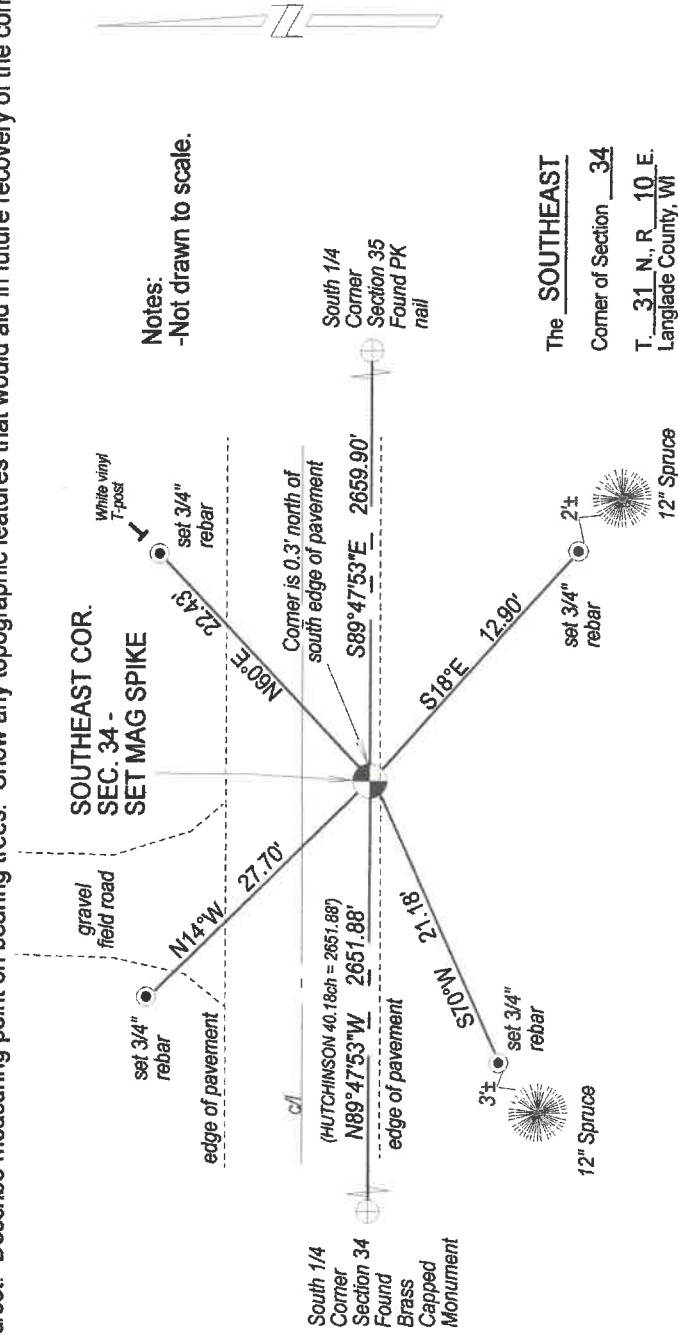
1921 - (FB-122 PG-77) Surveyor Hutchinson, working in Section 34, ran the south line of the SE1/4 and has an overall distance of 40.18 chs. (2651.88'). Hutchinson makes reference to the 40 corner along said line, being an iron pipe.

2016 - Working in Section 34, I searched the area and did not find any evidence of the Corner and searched for Hutchinson's iron pipe at the 40 corner, but didn't find anything. I set the corner straight line between the South 1/4 Section 34 and Section 35, at Hutchinson's overall distance along the SE1/4 of Section 34 (40.18chs. = 2651.88'). This location matches well with existing occupation to the East and West, and is within 4 feet of an equal distance split between the South 1/4 Corner of Section 34 and the South 1/4 Corner of Section 35.

Physical description of the monument set:

I set a mag spike at the corner location and tied it out as shown below.

Describe the accessories used to perpetuate the location of the corner. Include a plan view drawing and indicate accessories found/set. Describe measuring point on bearing trees. Show any topographic features that would aid in future recovery of the corner.

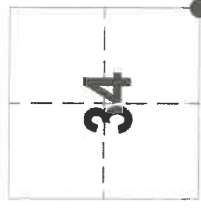


SURVEYOR'S SEAL



I, Timothy J. Rusch certify that the corner location shown on this record was determined by me or under my direction and control and that this U.S. Public Land Survey Monument Record is correct and complete to the best of my knowledge and belief.

Timothy J. Rusch 07-21-2020
Signature Date



● = Location of corner