

CERTIFIED LAND CORNER RESTORATION

Index No. 2-11

State of Wisconsin }
County of Lanlade } ss.

I Anthony B. Kiedrowski, do hereby
certify that on the 9th day
of February, 1978, I found
evidence of the S 1/4
corner of Sec. 33
Township 31
10, North, Range
10, Fourth Principal Meridian,
as described hereon; and that from this evidence
I established a new monument and accessories
as described hereon to perpetuate the original
location of this corner.

Resident witnesses:

.....
.....
.....

History of original corner establishment:
June, 1851, James Marsh set post for original corner.
June, 1937, D.A.Hintz set 3" iron pipe with brass cap.

Description of corner evidence found:

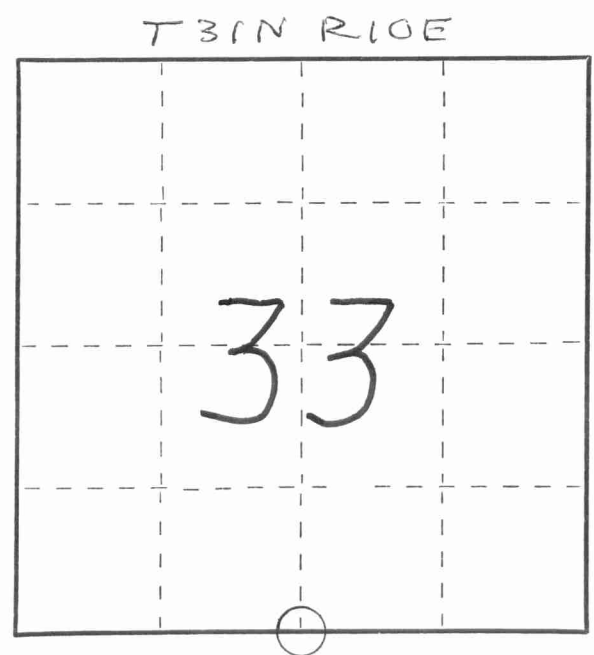
Found 3" iron pipe set by Hintz.

Description of monument and accessories I established to perpetuate the original location of this corner.

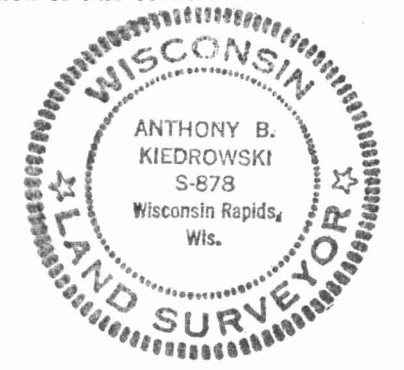
See reverse side.

FORM 985 H. C. MILLER CO., MILWAUKEE

43110330020



○ = Corner monument restored.



Dated at Wis. Rapids, Wis., this 10th day of February, 1978

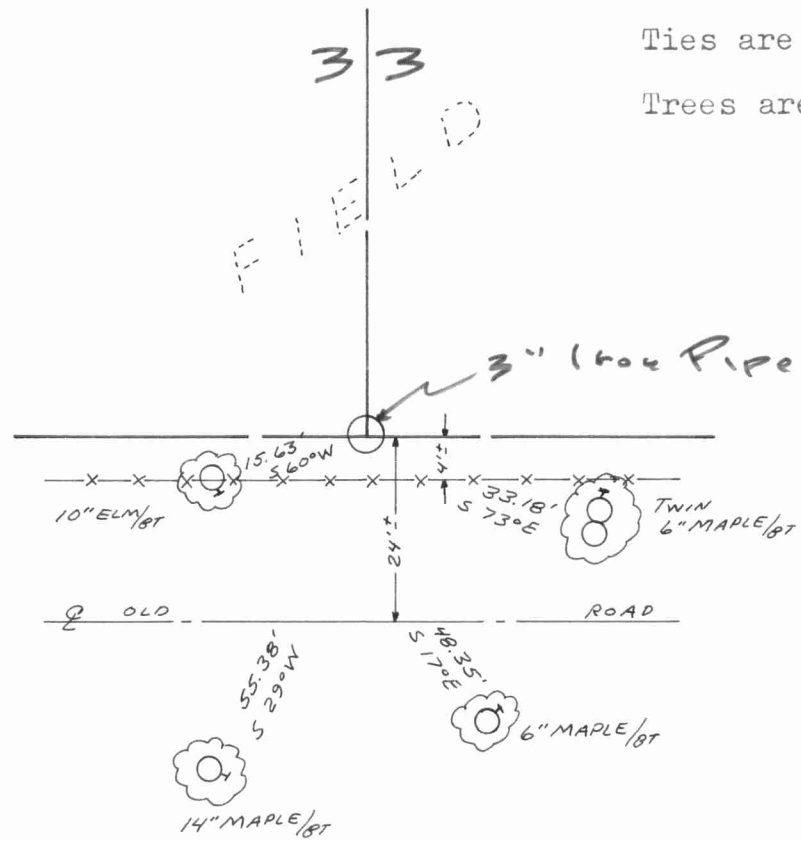
Signature AB Kiedrowski Title CLS Registration No. 878
(County Surveyor, Registered Land Surveyor, or other duly authorized official)

Office of Register of Deeds, County of....., I hereby certify that the within
instrument was filed in this office for record on the.....day of....., 19.....
at.....o'clock..... M.

.....
(Register of Deeds)

By.....Deputy

43110330000



Ties are to nail and brass disc.

Trees are scribed BT.