

**LANGLADE COUNTY U.S. PUBLIC LAND
SURVEY MONUMENT LOCATION RECORD**

Corner Location: Southwest Corner of Section 34
 Monument Type: Set 1" Aluminum Rod with 3.25" Cap
 County Coordinate: N 260,430.47 E 381,847.19
 Date of Survey: 9/23/2019 Datum: WSCRS Marathon NAD 83 (2011)
 Survey Party: John M. Jursa
 Field Book: Looseleaf Hewitt Page Number: 1

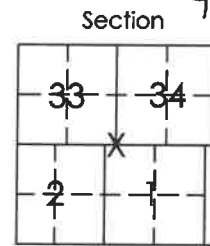
Found
 Set
 Re-set
 Re-Tied

Section 34
 Township 31N
 Range 10E

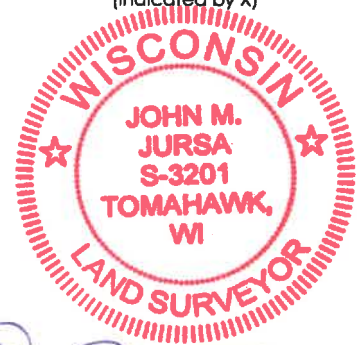
Z13

Ackley
 City, Village, Town

4311033 0000



Location (indicated by X)



[Signature]
 John M. Jursa, RLS-3201
 Date: 9/30/2019

BASIS FOR MONUMENT LOCATION:

(Describe method of survey and corner authentication)

12/26/1920 - M. Hutchinson found gas pipe by Webley.

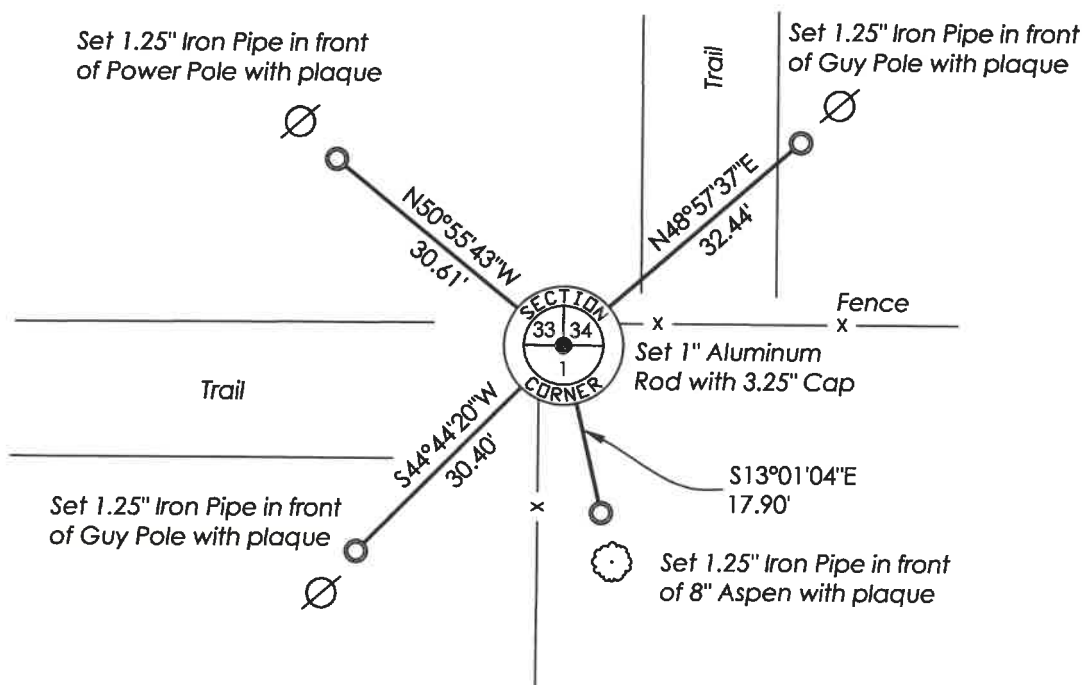
6/24/1926 - C.E. Baker found well point by Webley.

6/8/1937 - D.A. Hintz set a monument at this corner.

12/9/1977 - Anthony Kiedrowski found a 3" Iron Pipe with Brass Cap lying on ground. He found a hole lined with rocks that the pipe had been in and restored to original position and tied out.

9/23/2019 - I found the 4" Iron Pipe with 4" Brass Cap as described by Kiedrowski. It was loose in the mound of stones but a definite point of entry could be ascertained. I replaced the 4" Iron Pipe with a 1.0" Aluminum Rod with a 3.25" Aluminum Cap and set new ties as shown below.

TIE SKETCH: Show minimum of four (4) horizontal tie distances to fixed witness monuments found or set. Describe all monuments found or set.



Z13