

CERTIFIED LAND CORNER RESTORATION

Index No. Z-13

State of Wisconsin }  
County of LANGLADE } ss.

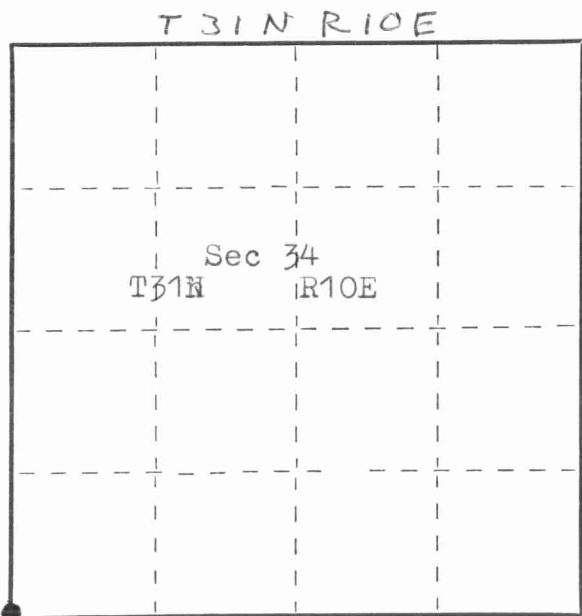
I ANTHONY B. KIEDROWSKI, do hereby certify that on the TENTH day of OCTOBER, 1977, I found evidence of the southwest corner of Section 34 Township 31, North, Range 10 E, Fourth Principal Meridian, as described hereon; and that from this evidence I established a new monument and accessories as described hereon to perpetuate the original location of this corner.

Resident witnesses:

.....  
.....  
.....

FORM 985 H. C. MILLER CO., MILWAUKEE

4311033000



● = Corner monument restored.

History of original corner establishment:

- June 20, 1851 - James Marsh set wood post for corner during the original survey.
- June 8, 1937 - D.A. Hintz found a monument at this corner.
- Dec. 26, 1920- M. Hutchinson found a gas pipe by Webley.
- June 24 1926 - C.E. Baker found well point by Webley.

Above notes are on file at the Langlade County Surveyor's office.  
Description of corner evidence found:

See sketch on reverse side

Description of monument and accessories I established to perpetuate the original location of this corner.

See sketch on reverse side



Dated at Wis. Rapids, Wis., this 9<sup>th</sup> day of December, 1977.

Signature AB Kiedrowski Title RLS Registration No. S-878  
(County Surveyor, Registered Land Surveyor, or other duly authorized official)

Office of Register of Deeds, County of Langlade, I hereby certify that the within instrument was filed in this office for record on the \_\_\_\_\_ day of \_\_\_\_\_, 19\_\_\_\_ at \_\_\_\_\_ o'clock \_\_\_\_\_ M.

.....  
(Register of Deeds)

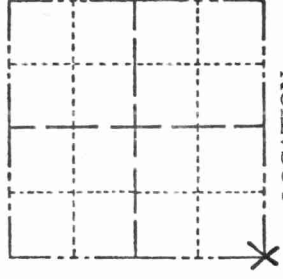
By.....Deputy

43110330000

# Government Land Corner Certificate

LANGLADE County  
 TYPE OF MONUMENT: 3" Iron Pipe/ Brass Cap  
 STATE PLANE COORDINATES: N \_\_\_\_\_ E \_\_\_\_\_  
 ELEVATION — M.S.L. DATUM: \_\_\_\_\_  
 THETA ANGLE: \_\_\_\_\_  
 FIELD BOOK: \_\_\_\_\_ PAGE \_\_\_\_\_  
 DRAWN BY: G. Rhinehart

CORNER NO. \_\_\_\_\_  
 SECTION 3/4 31  
 TOWN 10  
 RANGE \_\_\_\_\_



## BASIS FOR MONUMENT LOCATION

Show info such as: History of corner, with reference to Vol. and pg., dates, surveyor; exact description of monument replaced; if location computed, by taped or EDM traverse; landowner remarks, etc. (Use reverse side if necessary)

Found 3" Iron Pipe with Brass Cap lying on top of ground, a thorough investigation of area revealed hole lined with rocks that the pipe had been in. The pipe was restored to its original position and more stones and barbed wire were piled around it.

SEAL:



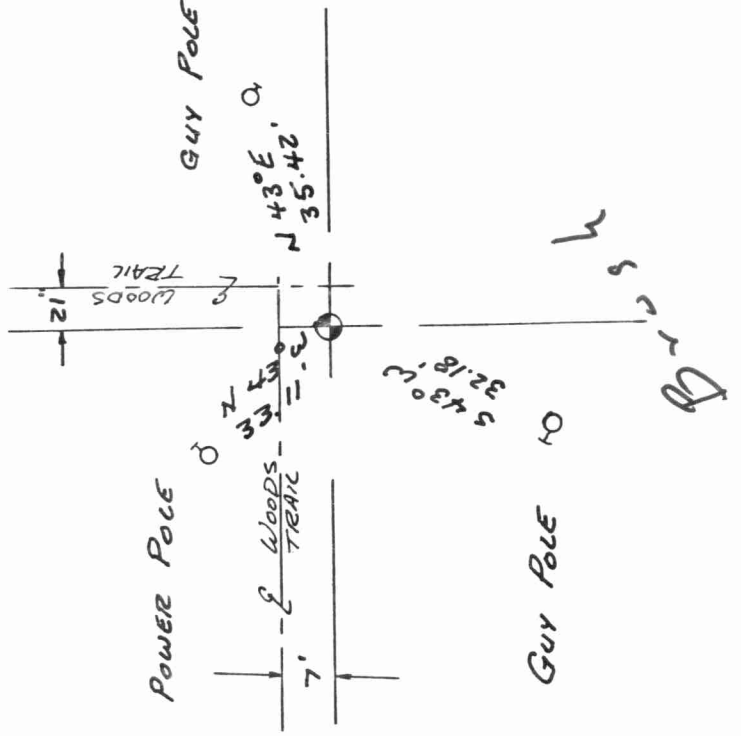
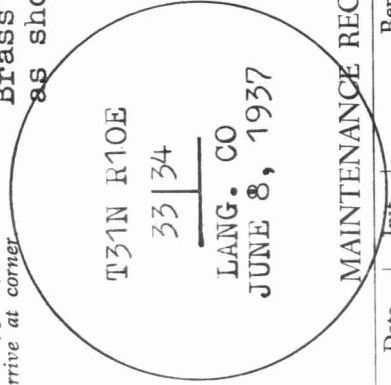
DATA SHOWN HERE ON CERTIFIED CORRECT.

Registered Land Surveyor

DATE: \_\_\_\_\_

## TIE SKETCH

Show at least four ties, also fence lines, roads, topo, size and type of witness trees and, if off road - best way to arrive at corner  
 Brass Cap inscribed as shown.



## MAINTENANCE RECORD

Date	Limit	Remarks