

**LANGLADE COUNTY U.S. PUBLIC LAND
SURVEY MONUMENT LOCATION RECORD**

Corner Location: South 1/4 Corner of Section 32
Monument Type: Found 4" Iron Pipe with 4" Brass Cap
County Coordinate: N 260,407.56 , E 373,903.72
Date of Survey: 10/25/2019 Datum: WSCRs Marathon NAD 83 (2011)
Survey Party: John M. Jursa
Field Book: Looseleaf Harrison Page Number: Z7

BASIS FOR MONUMENT LOCATION:

(Describe method of survey and corner authentication)

6/8/1937 - D.A. Hintz set monument according to instructions by the U.S. Government.

12/5/1977 - Anthony Kiedrowski found a 3" Iron Pipe with brass cap and tied out.

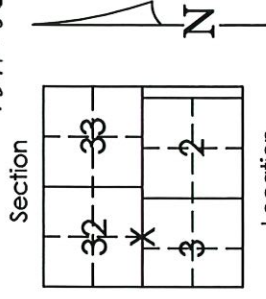
10/25/2019 - I found a 4" Iron Pipe with 4" Brass Cap as described by Kiedrowski. I did not find any of Kiedrowski's ties and set four new ties as shown below.

Found
Set
Re-set
Re-Tied

Section 32
Township 31N
Range 10E

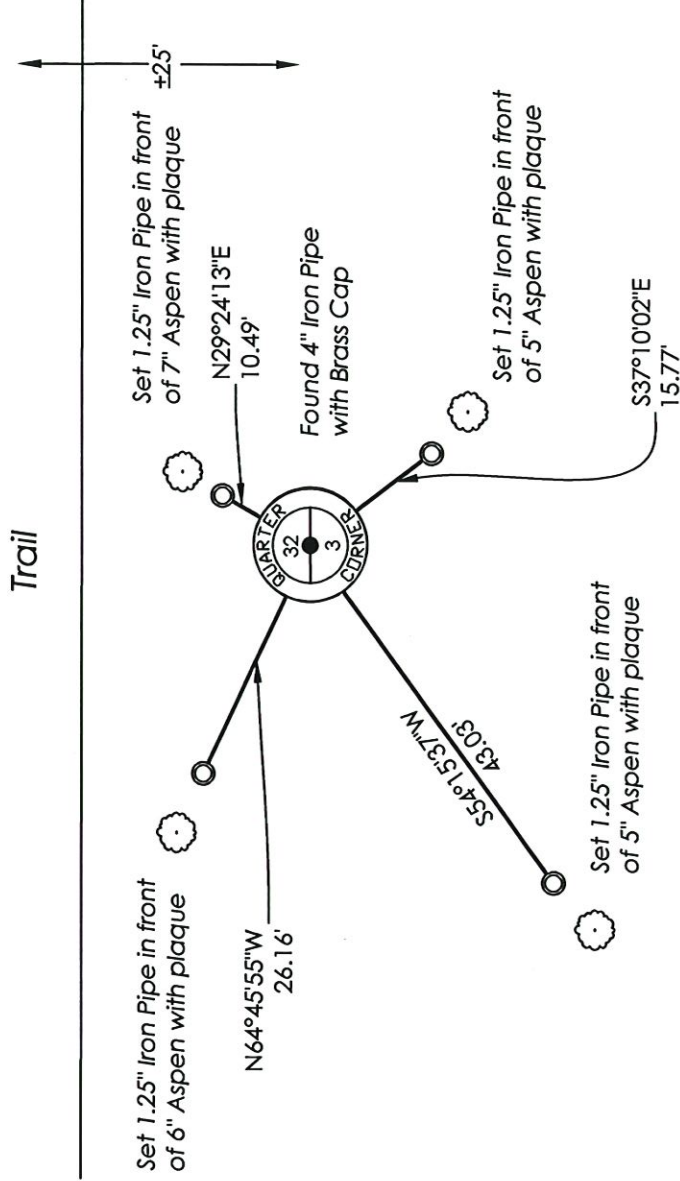
Z7

Ackley 4311032 0020
~~City, Village, Town~~



John M. Jursa, RLS-3201
Date: 10/31/2019

TIE SKETCH: Show minimum of four (4) horizontal tie distances to fixed witness monuments. Describe all monuments found or set.



Z7

CERTIFIED LAND CORNER RESTORATION

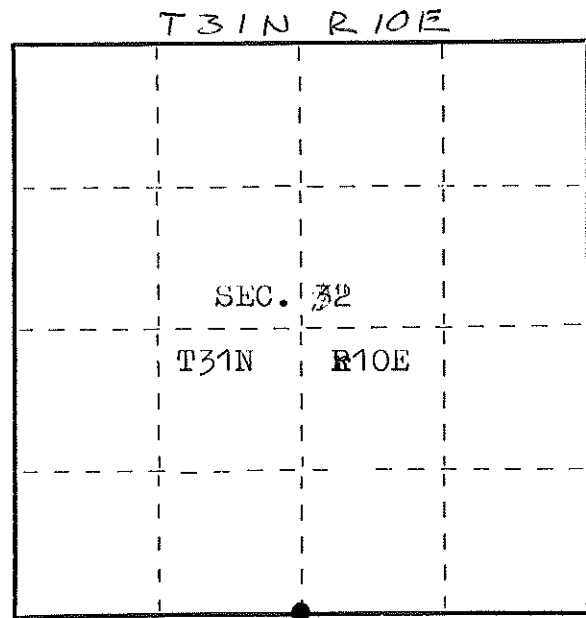
Index No. 2-7

State of Wisconsin }
County of LANGLADE } ss.

I ANTHONY B. KIEDROWSKI, do hereby certify that on the FIRST day of DECEMBER, 1977, I found evidence of the South Quarter corner of Sec. 32 Township 31, North, Range 10, Fourth Principal Meridian, as described hereon; and that from this evidence I established a new monument and accessories as described hereon to perpetuate the original location of this corner.

Resident witnesses:

.....
.....
.....



● = Corner monument restored.

History of original corner establishment:

June 20, 1851 - James Marsh used 8" Maple for corner.

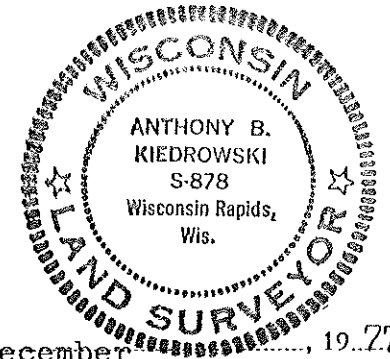
June 8, 1937- D.A. Hintz Set monument according to the instructions by the U.S. Government, while surveying the eight miles of line between the SW corner of Sec. 32, T31N, R9E, and the SE corner of Sec. 33, T31N, R10E.

Description of corner evidence found:

A three inch iron pipe with a brass cap(stamped) was found in place. A sketch of the brass cap is shown on the reverse side.

Description of monument and accessories I established to perpetuate the original location of this corner.

See sketch on the reverse side.



Dated at Wisc. Rapids Wis., this 5th day of December, 1977.

Signature AB Kiedrowski Title RLS Registration No. S-878
(County Surveyor, Registered Land Surveyor, or other duly authorized official)

Office of Register of Deeds, County of Langlade, I hereby certify that the within instrument was filed in this office for record on the day of, 19..... at..... o'clock..... M.

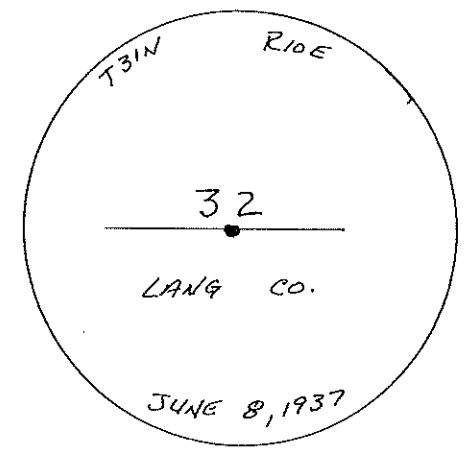
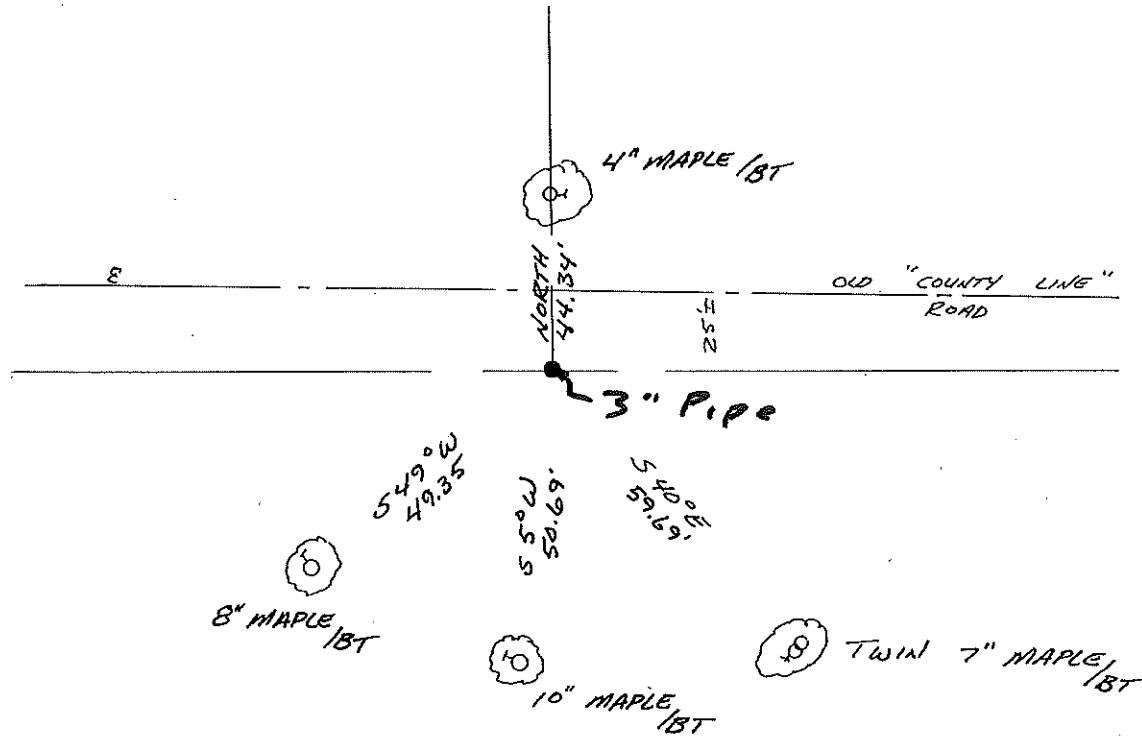
.....
(Register of Deeds)

By..... Deputy

FORM 985 H. C. MILLER CO., MILWAUKEE

4311032002

43110320020



MON. FOUND - 3" IRON PIPE / BRASS CAP

NOTES:

1. Tie distances are to a nail and disc driven into the bearing tree.
2. Trees bear a blaze with scribing and a location poster.

BT

