

**MARATHON COUNTY U.S. PUBLIC LAND  
SURVEY MONUMENT LOCATION RECORD**

Corner Location: Southeast Corner of Section 32

Monument Type: Set 1.0" Aluminum Rod with 3.25" Aluminum Cap

County Coordinate: N 260,414.35 E 376,551.21

Date of Survey: 10/9/2019 Datum: WSCRs Marathon NAD 83 (2011)

Survey Party: John M. Jursa

Field Book: Looseleaf Harrison Page Number: 79

**BASIS FOR MONUMENT LOCATION:**

(Describe method of survey and corner authentication)

6/1937 - D.A. Hintz set a 3" Iron Pipe with Brass Cap.

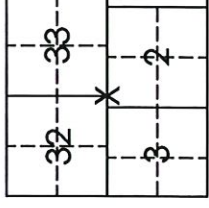
2/21/1978 - Anthony Kiedrowski did not find the 3" Iron Pipe set by Hintz. He set a 2" X 44" Iron Pipe with Brass Cap on a true line at a proportionate distance between existing corners on the standard parallel in accordance with BLM Manual of Instructions.

10/9/2019 - I found the 2.25" Iron Pipe with 3.0" Brass Cap as described by Kiedrowski leaning in a small mound of stones and was able to ascertain a point of entry. I removed the 2.25" Iron Pipe and set a 1.0" Aluminum Rod with 3.25" Aluminum Cap in its place. I found three existing ties to the southwest, south, southeast, and did not re-measure. I set four new ties and tied out as shown below.

Found  Set   
Re-set  Re-Tied

Section 32  
Township 31N  
Range 10E

Ackley  
City/Village/Town Section 43/1032 0000



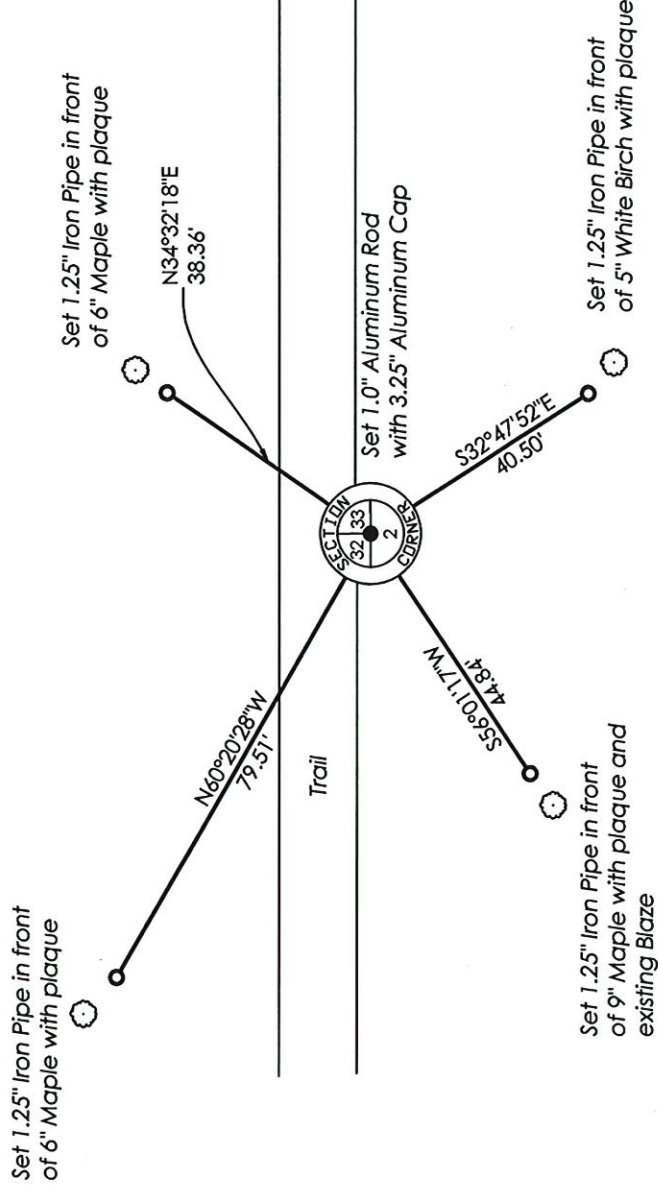
Location  
(indicated by X)



John M. Jursa, PLS-3201

Date: 9/30/2019

**TIE SKETCH:** Show minimum of four (4) horizontal tie distances to fixed witness monuments. Describe all monuments found or set.



CERTIFIED LAND CORNER RESTORATION

Index No. Z-9

State of Wisconsin }  
County of Langlade } ss.

I Anthony b. Kiedrowski, do hereby certify that on the 2nd day of February, 1978, I found evidence of the SW corner of Section 33 Township 31, North, Range 10, Fourth Principal Meridian, as described hereon; and that from this evidence I established a new monument and accessories as described hereon to perpetuate the original location of this corner.

Resident witnesses:

.....  
.....  
.....

History of original corner establishment:

June, 1851, James Marsh set a wood post for the original corner.  
June, 1937, D.A. Hintz set a three inch iron pipe with a brass cap.

Description of corner evidence found:

After a thorough search of an area determined by computation of a T2/EDM traverse between adjacent corners no evidence was found.



Description of monument and accessories I established to perpetuate the original location of this corner:

This corner was set on the true line at a proportionate distance between existing corners on the standard parallel in accordance with BLM Manual of Instructions.

Set 2" X 44" iron pipe with a brass cap.  
18" into the ground a large boulder was hit, a stone mound was erected around the pipe to the full height of the monument.

SEE REVERSE SIDE.

Dated at Wisc. Rapids, Wis., this 21st day of February, 1978.

Signature Anthony B. Kiedrowski Title R.L.S. Registration No. 878  
(County Surveyor, Registered Land Surveyor, or other duly authorized official)

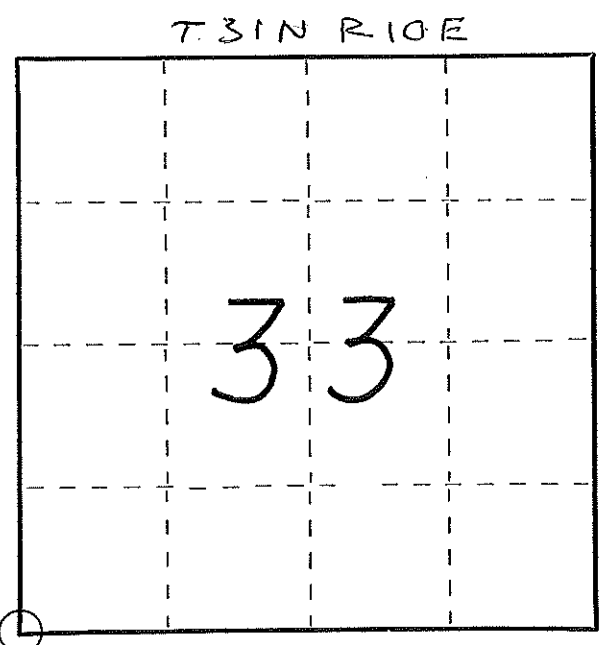
Office of Register of Deeds, County of....., I hereby certify that the within instrument was filed in this office for record on the.....day of....., 19..... at.....o'clock..... M.

.....  
(Register of Deeds)

By.....Deputy

FORM 985 H. C. MILLER CO., MILWAUKEE

4311032000



○ = Corner monument restored.

4311032000

Plies are to nail and disc driven into trees.

