

LANGLADE COUNTY U.S. PUBLIC LAND CORNER RESTORATION

The South Quarter corner of Section 30, T. 31 N., R. 10 E., Langlade County, WI.

Corner was: (check all that apply)

43110300020

- Restored through acceptance of an obliterated evidence location.
- Restored through acceptance of a found perpetuated location.
- Determined to be lost and re-established through proportionate methods.
- Show bearings and distances to PLSS corners used for proportioning, and show original distances).
- Restored/recovered/re-established in a location that differs from a previously established position.
- (Show difference in plan view below).
- Check here if additional information is shown on the reverse side of this form.

Describe record evidence, recovered physical evidence, occupational evidence, testimonial evidence and all other evidence considered in the recovery/restoration of the corner.

The original corner was established in 1860 by Hiram C. Fellows. Original bearings trees: fir, 6", N40°E, 23 links and a tamarac, 8", S10°W, 30 links. There is nothing in the records to indicate that anyone ever saw or used the corner after the original government survey. The land in Sections 30 and 31 have been large tracts since at least 1927 as shown in "Bakers Atlas". I re-established this corner by single proportionate methods between the adjoining section corners as shown below.

Physical description of the monument set:

I set a 1" x 60" aluminum pipe monument with a 2" aluminum cap that has a magnet inside.
The top of the monument is 0.5' above ground. I set a white vinyl sign post 0.5' north of the monument.

Describe the accessories used to perpetuate the corner. Include a plan view drawing and accessories found/set. Describe measuring point on bearing trees. Show any topographic features that would aid in future recovery of the corner.

LEGEND

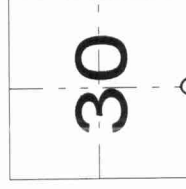
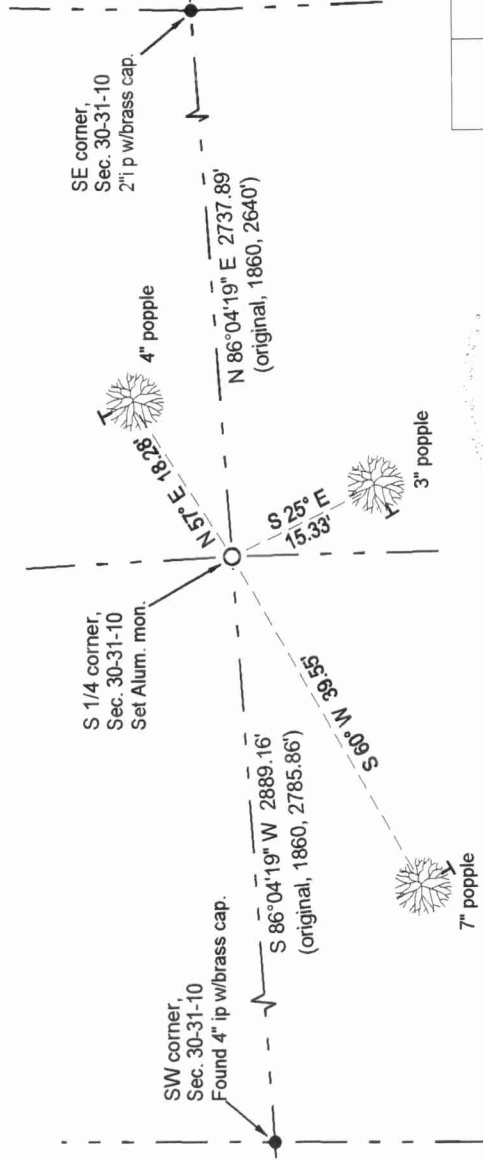
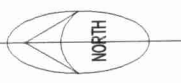
○ 1" x 60" aluminum rod monument set

Section line bearings referenced to the Langlade County Coordinate System grid.

Tree bearings magnetic with hand compass.

BT's measured to an aluminum nail in a low blaze on the side of the tree. Trees have BT signs and are painted red.

Field book: FB20-18



○ = corner perpetuated

The South Quarter corner of Section 30, T. 31 N., R. 10 E., Langlade County, WI



I, David E. Tlusty, Registered Land Surveyor, as Langlade County Surveyor, certify that the corner location on this record was determined by me and that this U.S. Public Land Survey Monument Record is correct to the best of my knowledge and belief.

